

UTAH HIV/AIDS Epidemiological Profile-Update-2009

2009 Trends:

During 2009, 112 HIV positive individuals were reported compared to 106 the previous year, a 5.7% increase. There were 77 AIDS cases documented in Utah during 2009, a 16.7 % increase from the previous year, and the majority of these cases (78%) met the AIDS case definition based on low CD4 T-lymphocyte counts. Sixty-six AIDS cases were documented in 2008. Nineteen AIDS deaths were reported during 2009 compared to 24 deaths reported in 2008.

After a review of previous trends, it is anticipated that between 85-115 HIV infections and 45-75 AIDS cases will be reported during 2010.

During 2009, 78 (70%) of HIV-positive individuals and 37 (48%) of AIDS cases were reported in the age group 20-39. Of the 189 individuals reported with HIV and AIDS in 2009, 160 (85%) were male, 29 (15%) were female.

Two teenagers (ages 13-19) and 17 young adults (ages 20-24) were reported with HIV/AIDS during 2009. Cumulative data shows 55 teenagers and 283 young adults have been reported with HIV/AIDS from 1983 – 2009. The distribution by risk exposure for teens and young adults remains consistent with that of older adults.

During 2009, two HIV-positive individuals were reported with tuberculosis. The total number of HIV-positive Utah residents with TB, reported from 1983 – 2009, is 79; forty-one of these individuals have died. Additionally, 26 out-of-state AIDS cases have been reported with tuberculosis and 10 have died.

Gender, Risk Category, Race/Ethnicity and Age:

During 2009, 160 male HIV/AIDS cases were reported, a 7% increase from 150 male cases in 2008. Male-to-male sexual contact (60%) was the most common disclosed risk reported among men of all races. Men who have sex with men and inject drugs (24%) was the second highest disclosed risk followed by injecting drug use (5%). Eight percent of men reported during 2009 did not disclose a risk. The racial breakdown of men with HIV/AIDS in 2009 shows 67% were White, 21% were Hispanic, 6% were Black, 2% were Asian/ Pacific Islander, 1% were Native American and 3% were multi-race, not Hispanic or unknown.

Twenty-nine women were reported with HIV/AIDS during 2009, a 32% increase from 22 women in 2008. Heterosexual contact (46%) was the most common risk factor reported. Injecting drug use (21%) was the second highest disclosed risk. However, 31% did not disclose a risk. The racial breakdown of women shows 38% were Black, 31% were White, and 21% were Hispanic. 7% were Asian, and 3% race/ethnicity was unknown. Seventy-six percent of these women were of childbearing age (15-44).

Six HIV-positive women delivered a live infant during 2009. One woman was an injecting drug user and 5 women had male sex partners with unknown HIV status. Additionally, there were 7 other HIV-positive women who were pregnant.

Of the 189 Utah individuals reported with HIV/AIDS in 2009, 171 (91%) live along the Wasatch Front. Seventy-five percent of these individuals live in Salt Lake County. Nine percent of HIV/AIDS morbidity was reported from outside the Wasatch Front. The majority of individuals from rural areas continue to come to Salt Lake City for their medical treatment. Sixty-eight (36%) of the 189 individuals with HIV/AIDS are from ethnic populations. Ethnic populations comprise 17% of the state's total population.

HIV/AIDS Cumulative Reporting (1983-2009):

A total of 2,476 AIDS cases have been reported in Utah through December 31, 2009. Fifty-three percent of these have become AIDS based on low CD4 counts. A total of 1,189 (48%) of Utah AIDS cases have died. A total of 1,062 HIV-positive individuals who have not progressed to AIDS have been reported, 43 of these individuals have died.

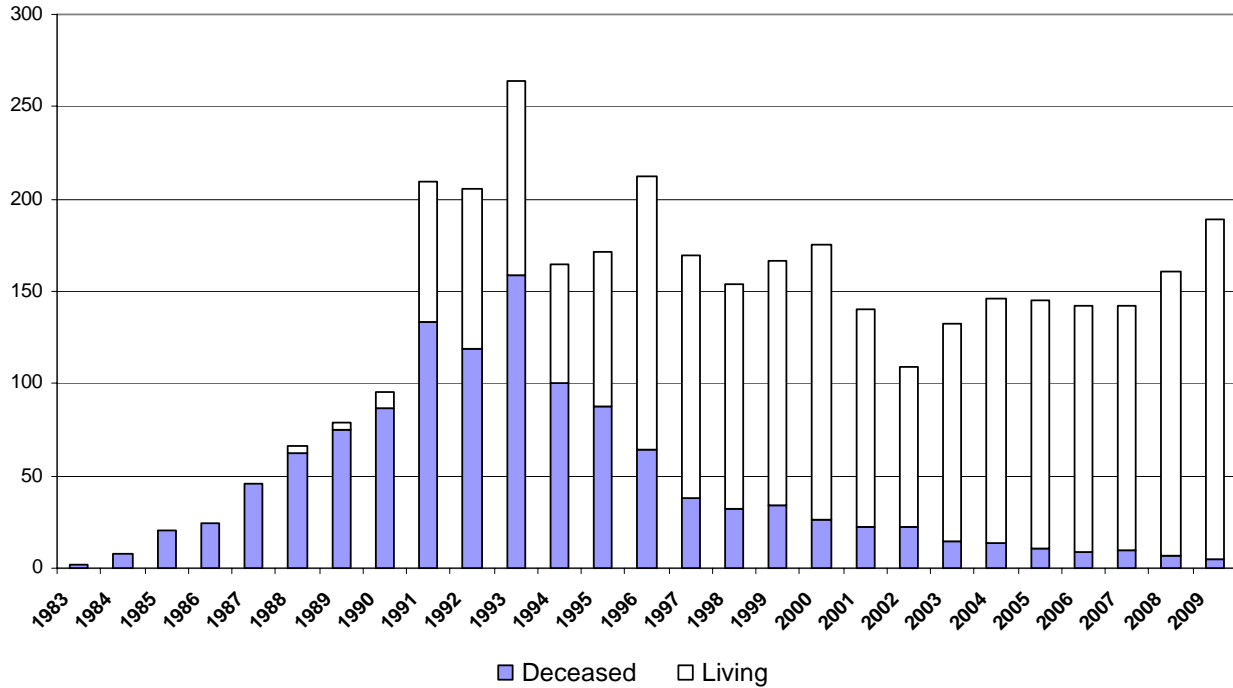
Cumulative totals show that most, (75%) of HIV/AIDS cases were White. Males comprise the majority (87%) and females comprise 13% of reported HIV/AIDS cases. Male-to-male sexual contact is the most common risk factor reported among men. Men who have sex with men and inject drugs is the second highest risk disclosed followed by men who disclose only injecting drugs. Among women, the most common means of exposure is heterosexual contact followed by injecting drug use.

An additional 43 out-of-state AIDS cases, and 51 out-of-state HIV-infections were added in 2009 for a total of 1,312 individuals who have been documented as out-of-state HIV/AIDS cases. These individuals are those who have been diagnosed with HIV or AIDS in another state and reside in or received medical care in Utah.

Communicable Disease Analysis and Reporting Program
Bureau of Epidemiology
Utah Department of Health
Telephone 801-538-6191 Fax: (801) 538-9913

<http://health.utah.gov/cdc/sp.htm>

**Utah HIV/AIDS Cases by Year of Report
through December
3,538 Cases**



Cumulative Reporting (1983-2009)

Total HIV: 1,062
Deceased: 43

Total AIDS: 2,476
Deceased: 1,189

Total Living: 2,306

Communicable Disease Analysis and Reporting Program
Bureau of Epidemiology
Utah Department of Health
Telephone 801-538-6191 Fax: (801) 538-9913

<http://health.utah.gov/cdc/sp.htm>