



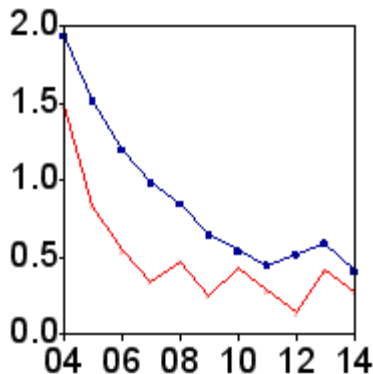
# Utah - entire year of 2015.

[Hepatitis Home](#) | [NCID Home](#) | [Contact Us](#)

## Reported cases per 100,000 population

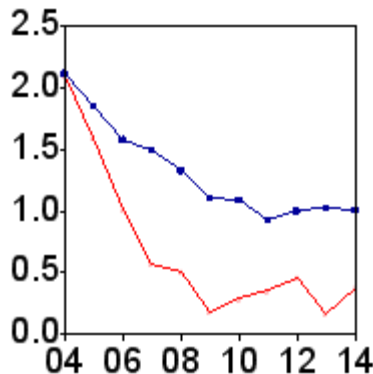
### Hepatitis A

2015 Utah rate=0.3  
2015 US rate=0.4



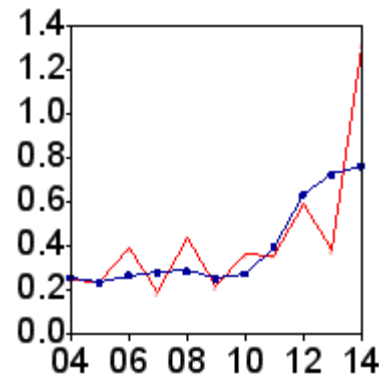
### Acute Hepatitis B

2015 Utah rate=0.3  
2015 US rate=1.0



### Acute Hepatitis C

2015 Utah rate=1.0  
2015 US rate=0.7



\*2015 rate data are provisional

—●— US rate  
— Utah rate

## Number of reported cases by week and quarter

Q1 - 2015 MMWR Week 1-13 Q2 - 2015 MMWR Week 14-26 Q3 - 2015 MMWR Week 27-39 Q4 - 2015 MMWR Week 40-52(53)

Week	Hepatitis A				Acute Hepatitis B				Acute Hepatitis C			
	Q1	Q2	Q3	Q4	Q1	Q2	Q3	Q4	Q1	Q2	Q3	Q4
01	0	0	0	0	0	1	0	1	1	0	0	1
02	0	0	0	0	0	0	1	0	0	0	0	0
03	0	0	0	0	0	0	1	0	0	2	2	1
04	0	0	0	0	0	0	0	0	0	4	1	1
05	0	1	0	0	2	0	0	0	1	0	0	0
06	0	0	0	0	0	0	1	0	0	0	0	1
07	0	1	1	0	0	1	0	0	0	0	1	3
08	0	0	0	0	0	0	0	0	0	0	1	2
09	0	0	1	1	0	1	0	0	0	1	0	0
10	0	1	1	0	0	0	1	0	0	0	0	0
11	0	0	0	0	0	0	0	0	0	1	0	2
12	0	0	0	0	0	0	0	0	0	0	0	1
13	1	0	0	0	0	0	0	0	2	0	1	0
	1	3	3	1	2	3	4	1	4	8	6	12

## Number of reported cases by County

current quarter/mean (range) for this quarter during previous 2 years

County	Hepatitis A	Acute Hepatitis B	Acute Hepatitis C
Beaver	0 / 0.0	0 / 0.0	0 / 0.0
Box Elder	0 / 0.0	0 / 0.0	0 / 0.0
Cache	0 / 0.0	0 / 0.0	0 / 0.0
Carbon	0 / 0.0	0 / 0.0	0 / 0.0
Daggett	0 / 0.0	0 / 0.0	0 / 0.0
Davis	0 / 2.0 (1-3)	0 / 0.0	0 / 2.0 (1-3)

Duchesne	0 / 0.0	0 / 0.0	0 / 0.5 (0-1)
Emery	0 / 0.0	0 / 0.0	0 / 0.0
Garfield	0 / 0.5 (0-1)	0 / 0.0	0 / 0.0
Grand	0 / 0.5 (0-1)	0 / 0.0	0 / 0.0
Iron	<b>1 / 0.0</b>	0 / 0.0	0 / 0.0
Juab	0 / 0.0	0 / 0.0	0 / 0.0
Kane	0 / 0.5 (0-1)	0 / 0.0	0 / 0.0
Millard	0 / 0.0	0 / 0.0	0 / 0.0
Morgan	0 / 0.0	0 / 0.0	0 / 0.0
Piute	0 / 0.0	0 / 0.0	0 / 0.0
Rich	0 / 0.0	0 / 0.0	0 / 0.0
Salt Lake	<b>4 / 3.0 (3-3)</b>	<b>7 / 5.0 (4-6)</b>	<b>17 / 14.0 (4-24)</b>
San Juan	0 / 0.0	0 / 0.0	0 / 0.0
Sanpete	0 / 0.0	<b>1 / 0.0</b>	0 / 0.0
Sevier	0 / 0.0	<b>1 / 0.0</b>	0 / 0.0
Summit	0 / 0.0	0 / 0.0	0 / 0.0
Tooele	0 / 0.0	0 / 0.5 (0-1)	0 / 0.5 (0-1)
Uintah	0 / 0.0	0 / 0.0	0 / 0.0
Utah	2 / 2.0 (2-2)	1 / 1.5 (1-2)	<b>5 / 3.0 (2-4)</b>
Wasatch	0 / 0.0	0 / 0.5 (0-1)	0 / 0.0
Washington	1 / 1.5 (1-2)	0 / 0.0	<b>3 / 1.0 (0-2)</b>
Wayne	0 / 0.0	0 / 0.0	0 / 0.0
Weber	0 / 0.0	0 / 0.5 (0-1)	<b>5 / 3.5 (3-4)</b>
Utah	8 / 10.0 (8-12)	<b>10 / 8.0 (5-11)</b>	<b>30 / 24.5 (11-38)</b>

$x / X (a-z) / p$  where: x is the number cases reported this quarter

X is the mean and (a-z) the range of cases reported for equivalent quarter during previous 2 years

p is the number of probable cases reported within x

**Bold values** : Current year is greater than the previous two year mean.

#### Number of reported cases/Rate per 100,000 reported cases, by age group

Age Group (years)	Hepatitis A	Acute Hepatitis B	Acute Hepatitis C
<2	0 / 0.0	0 / 0.0	0 / 0.0
2-5	0 / 0.0	0 / 0.0	0 / 0.0
6-10	0 / 0.0	0 / 0.0	0 / 0.0
11-20	1 / 0.2	0 / 0.0	3 / 0.6
21-30	1 / 0.2	0 / 0.0	10 / 2.2
31-40	1 / 0.2	3 / 0.7	14 / 3.3
41-50	2 / 0.6	5 / 1.6	3 / 0.9
>50	3 / 0.4	2 / 0.3	0 / 0.0

#### Number of reported cases/Rate per 100,000 reported cases, by race

Race	Hepatitis A	Acute Hepatitis B	Acute Hepatitis C
American Indian/Alaskan Native	0 / 0.0	0 / 0.0	1 / 3.2
Asian/Pacific Islander	1 / 1.0	0 / 0.0	0 / 0.0
Black Non-Hispanic	0 / 0.0	1 / 2.5	0 / 0.0
White Non-Hispanic	5 / 0.2	5 / 0.2	22 / 0.9
Hispanic	1 / 0.3	3 / 0.8	4 / 1.0
Unknown	1 / .	1 / .	3 / .

<b>Number of reported cases/Rate per 100,000 reported cases, by sex</b>			
<b>Sex</b>	<b>Hepatitis A</b>	<b>Acute Hepatitis B</b>	<b>Acute Hepatitis C</b>
Male	4 / 0.3	6 / 0.4	19 / 1.3
Female	4 / 0.3	4 / 0.3	11 / 0.8

<b>Reported number of Perinatal Hepatitis B Cases</b>	
Utah	0

<b>Risk Factor Frequency</b>	
<b>Hepatitis A (n=8)</b>	
Food handler:	0 of 0
Contact of person with hepatitis A:	0 of 0
Travel:	0 of 0
Men who have sex with men:	0 of 0
Injection drug use:	0 of 0
<b>Acute Hepatitis B (n=10)</b>	
Multiple(>1) sexual partners:	0 of 0
History of blood transfusion:	0 of 9
Men who have sex with men:	0 of 0
Injection drug use:	0 of 2
<b>Acute Hepatitis C (n=30)</b>	
Multiple(>1) sexual partners:	0 of 0
History of blood transfusion:	0 of 6
Men who have sex with men:	0 of 0
Injection drug use:	7 of 8
n of N, where: n = Number with risk factor	
N = Number of times question was answered	