



Figure 6.1 Average Number of Medical Visits in the Previous 12 Months, Utah, 1996, 2001, and 2003

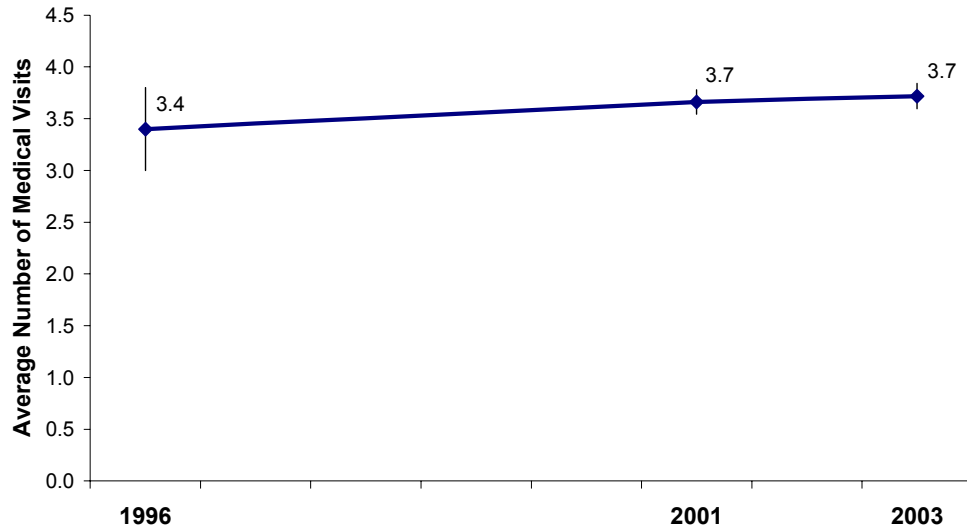
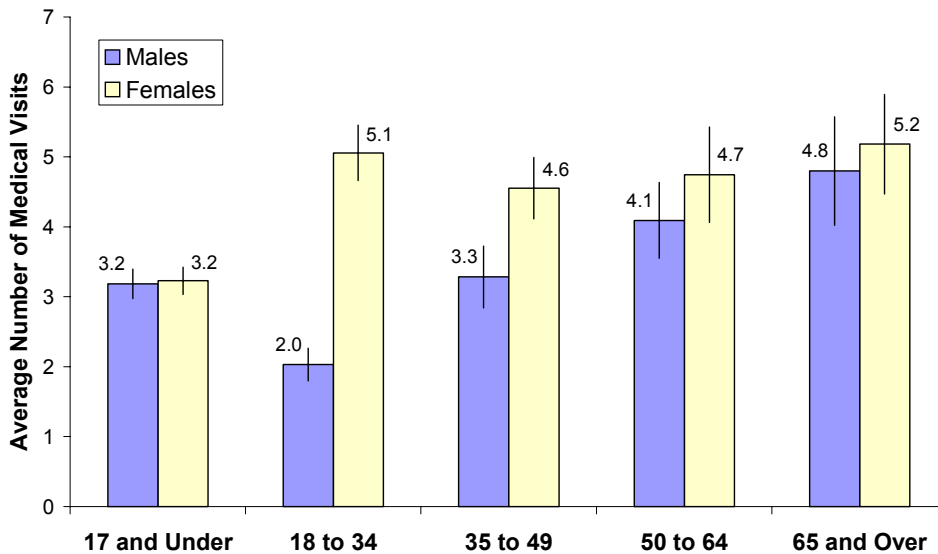


Figure 6.2 Average Number of Medical Visits in the Previous 12 Months by Age and Sex, Utah, 2003



- The average number of medical visits did not change from 2001 to 2003.
- Women aged 18 to 34 and 65 and over had the highest average number of medical visits.
- Women aged 18 to 34 had over twice as many medical visits than men the same age. This could be because these are prime childbearing years and probably include prenatal visits.



Table 6. Health Care Utilization: Average Number of Medical Visits in the Previous 12 Months by Selected Demographic Characteristics, Utah Residents, 2003.

| Demographic Subgroup | Utah Population Distribution | | Survey Estimates of Number of Medical Visits in Previous 12 Months | | |
|--|------------------------------|--------------------------------|--|---|---|
| | Percentage Distribution | Number of Persons ¹ | Average Number of Medical Visits, Last 12 Months ² | Total Number of Medical Visits ^{3,4} | Distribution of Average Number of Medical Visits by Subgroup ⁴ |
| 2003 Utah Population | 100.0% | 2,354,775 | 3.7 ± 0.1 | 8,756,400 | 100.0% |
| Sex | | | | | |
| Male | 50.2% | 1,181,516 | 3.1 ± 0.2 | 3,662,600 | 41.8% |
| Female | 49.8% | 1,173,259 | 4.3 ± 0.2 | 5,094,800 | 58.2% |
| Total, All Utahns | 100.0% | 2,354,775 | 3.7 ± 0.1 | 8,756,400 | 100.0% |
| Age Group | | | | | |
| 17 and Under | 31.5% | 742,867 | 3.2 ± 0.1 | 2,381,600 | 27.1% |
| 18 to 34 | 29.1% | 685,764 | 3.5 ± 0.2 | 2,405,100 | 27.4% |
| 35 to 49 | 18.8% | 442,006 | 3.9 ± 0.3 | 1,730,300 | 19.7% |
| 50 to 64 | 12.1% | 285,779 | 4.4 ± 0.4 | 1,265,500 | 14.4% |
| 65 and Over | 8.4% | 198,359 | 5.0 ± 0.5 | 993,000 | 11.3% |
| Total, All Utahns | 100.0% | 2,354,775 | 3.7 ± 0.1 | 8,756,400 | 100.0% |
| Sex and Age | | | | | |
| Males, 17 and Under | 16.2% | 381,882 | 3.2 ± 0.2 | 1,216,200 | 13.8% |
| Males, 18 to 34 | 14.7% | 347,144 | 2.0 ± 0.2 | 704,600 | 8.0% |
| Males, 35 to 49 | 9.5% | 223,919 | 3.3 ± 0.4 | 735,300 | 8.4% |
| Males 50 to 64 | 6.0% | 141,427 | 4.1 ± 0.5 | 578,900 | 6.6% |
| Males, 65 and Over | 3.7% | 87,144 | 4.8 ± 0.8 | 418,200 | 4.8% |
| Females, 17 and Under | 15.3% | 360,985 | 3.2 ± 0.2 | 1,165,300 | 13.3% |
| Females, 18 to 34 | 14.4% | 338,620 | 5.1 ± 0.4 | 1,713,000 | 19.5% |
| Females, 35 to 49 | 9.3% | 218,087 | 4.6 ± 0.4 | 993,000 | 11.3% |
| Females 50 to 64 | 6.1% | 144,352 | 4.7 ± 0.7 | 685,300 | 7.8% |
| Females, 65 and Over | 4.7% | 111,215 | 5.2 ± 0.7 | 576,500 | 6.6% |
| Total, All Utahns | 100.0% | 2,354,775 | 3.7 ± 0.1 | 8,756,400 | 100.0% |
| Local Health District⁵ | | | | | |
| Bear River | 6.1% | 143,593 | 3.7 ± 0.4 | 530,100 | 6.1% |
| Central | 2.9% | 69,140 | 3.5 ± 0.4 | 241,500 | 2.8% |
| Davis | 10.7% | 252,521 | 4.6 ± 0.5 | 1,150,800 | 13.2% |
| Salt Lake | 39.6% | 932,365 | 3.8 ± 0.2 | 3,586,800 | 41.0% |
| Southeastern | 2.3% | 53,675 | 3.4 ± 0.3 | 183,800 | 2.1% |
| Southwest | 6.5% | 154,152 | 3.4 ± 0.4 | 525,500 | 6.0% |
| Summit | 1.4% | 32,831 | 3.7 ± 0.4 | 123,100 | 1.4% |
| Tooele | 2.0% | 46,815 | 3.7 ± 0.3 | 171,000 | 2.0% |
| TriCounty | 1.8% | 42,241 | 3.7 ± 0.4 | 156,900 | 1.8% |
| Utah County | 17.0% | 400,670 | 3.3 ± 0.2 | 1,309,700 | 15.0% |
| Wasatch | 0.7% | 17,179 | 3.8 ± 0.5 | 65,900 | 0.8% |
| Weber-Morgan | 8.9% | 209,593 | 3.4 ± 0.4 | 705,200 | 8.1% |
| Total, All Utahns | 100.0% | 2,354,775 | 3.7 ± 0.1 | 8,756,400 | 100.1% |
| Annual Household Income | | | | | |
| Under \$20,000 | 9.9% | 232,800 | 4.5 ± 0.5 | 1,041,300 | 11.6% |
| \$20,000 to <\$45,000 | 30.7% | 722,400 | 3.9 ± 0.2 | 2,850,900 | 31.9% |
| \$45,000 to <\$65,000 | 23.5% | 552,500 | 3.5 ± 0.3 | 1,920,500 | 21.5% |
| \$65,000 and Over | 36.0% | 847,100 | 3.7 ± 0.2 | 3,134,200 | 35.0% |
| Total, All Utahns | 100.0% | 2,354,800 | 3.7 ± 0.1 | 8,756,400 | 100.0% |
| Health Insurance Coverage | | | | | |
| Insured | 90.9% | 2,140,300 | 3.9 ± 0.1 | 8,259,700 | 94.0% |
| Uninsured | 9.1% | 214,500 | 2.5 ± 0.3 | 529,300 | 6.0% |
| Total, All Utahns | 100.0% | 2,354,800 | 3.7 ± 0.1 | 8,756,400 | 100.0% |

1 Population estimates of sex, age groups, and LHD based on 2003 Baseline Projections, Governor's Office of Planning and Budget, UPED Model System; all others based on the 2003 UHSS and rounded to the nearest 100 persons.

2 Plus or minus 95% confidence interval.

3 Rounded to the nearest 100 persons.

4 Figures in these columns may not sum to the total because of data weighting and missing values on the grouping variables.

5 These rates have not been age-adjusted. Age-adjusted rates are available upon request.

Note: Does not include overnight hospital stays.



Figure 7.1 Percentage of Persons Who Received a Routine Medical Check-Up in the Previous 12 Months, Utah, 1996, 2001, and 2003

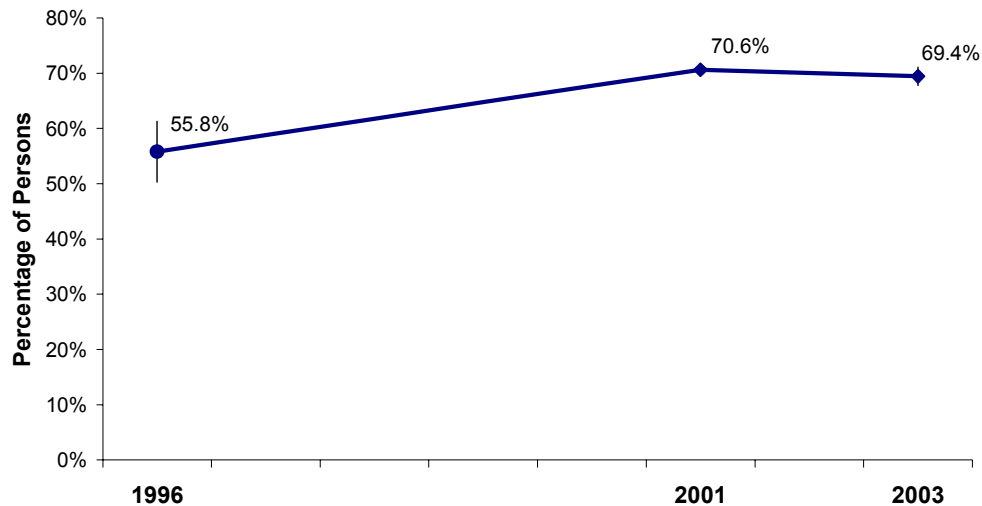
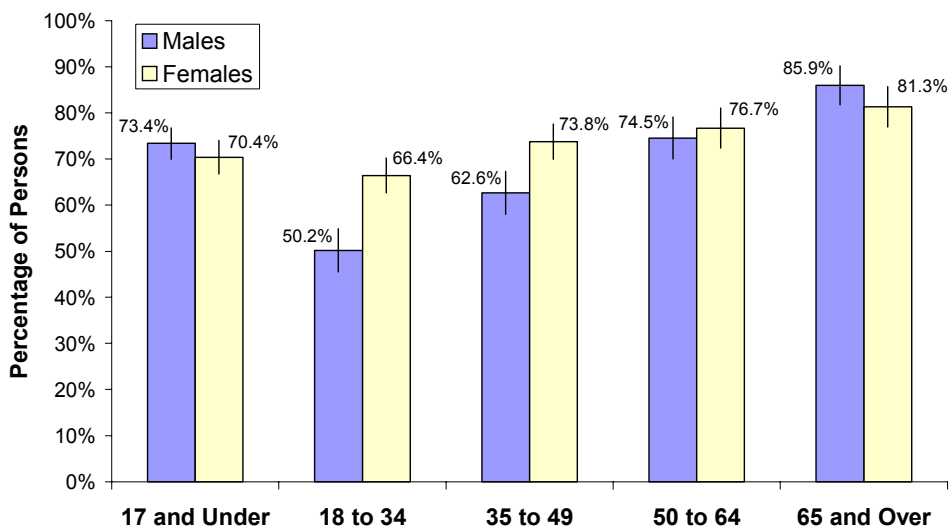


Figure 7.2 Percentage of Persons Who Received a Routine Medical Check-Up in the Previous 12 Months by Age and Sex, Utah, 2003



- Among adults, the percentage of Utahns who received a medical check-up increased with age, regardless of sex.
- Men and women aged 65 and over were the most likely to receive a routine medical check-up (85.9% and 81.3% respectively).



Table 7. Preventive Medical Visit: Percentage of Persons Who Received a Routine Medical Check-Up in the Previous 12 Months by Selected Demographic Characteristics, Utah Residents, 2003.

| Demographic Subgroup | Utah Population Distribution | | Survey Estimates of Utahns With a Routine Medical Check-Up | | |
|--|------------------------------|--------------------------------|--|----------------------------------|---|
| | Percentage Distribution | Number of Persons ¹ | Percentage of Persons With a Routine Exam ² | Number of Persons ^{3,4} | Percentage Distribution of Persons With a Routine Exam by Subgroup ⁴ |
| 2003 Utah Population | 100.0% | 2,354,775 | 69.4% ± 1.6% | 1,635,100 | 100.0% |
| Sex | | | | | |
| Male | 50.2% | 1,181,516 | 66.8% ± 2.2% | 789,700 | 48.4% |
| Female | 49.8% | 1,173,259 | 71.8% ± 2.0% | 842,500 | 51.6% |
| Total, All Utahns | 100.0% | 2,354,775 | 69.4% ± 1.6% | 1,635,100 | 100.0% |
| Age Group | | | | | |
| 17 and Under | 31.5% | 742,867 | 71.9% ± 2.8% | 534,200 | 32.9% |
| 18 to 34 | 29.1% | 685,764 | 59.0% ± 3.2% | 404,400 | 24.9% |
| 35 to 49 | 18.8% | 442,006 | 68.6% ± 3.2% | 303,200 | 18.7% |
| 50 to 64 | 12.1% | 285,779 | 75.7% ± 3.3% | 216,300 | 13.3% |
| 65 and Over | 8.4% | 198,359 | 83.4% ± 3.3% | 165,500 | 10.2% |
| Total, All Utahns | 100.0% | 2,354,775 | 69.4% ± 1.6% | 1,635,100 | 100.0% |
| Sex and Age | | | | | |
| Males, 17 and Under | 16.2% | 381,882 | 73.4% ± 3.4% | 280,100 | 17.3% |
| Males, 18 to 34 | 14.7% | 347,144 | 50.2% ± 4.7% | 174,200 | 10.8% |
| Males, 35 to 49 | 9.5% | 223,919 | 62.6% ± 4.7% | 140,200 | 8.7% |
| Males 50 to 64 | 6.0% | 141,427 | 74.5% ± 4.5% | 105,400 | 6.5% |
| Males, 65 and Over | 3.7% | 87,144 | 85.9% ± 4.2% | 74,900 | 4.6% |
| Females, 17 and Under | 15.3% | 360,985 | 70.4% ± 3.6% | 254,100 | 15.7% |
| Females, 18 to 34 | 14.4% | 338,620 | 66.4% ± 3.8% | 224,900 | 13.9% |
| Females, 35 to 49 | 9.3% | 218,087 | 73.8% ± 3.8% | 160,800 | 10.0% |
| Females 50 to 64 | 6.1% | 144,352 | 76.7% ± 4.4% | 110,700 | 6.9% |
| Females, 65 and Over | 4.7% | 111,215 | 81.3% ± 4.4% | 90,500 | 5.6% |
| Total, All Utahns | 100.0% | 2,354,775 | 69.4% ± 1.6% | 1,635,100 | 100.0% |
| Local Health District⁵ | | | | | |
| Bear River | 6.1% | 143,593 | 68.1% ± 5.3% | 97,700 | 6.0% |
| Central | 2.9% | 69,140 | 68.9% ± 5.2% | 47,700 | 2.9% |
| Davis | 10.7% | 252,521 | 64.3% ± 5.3% | 162,400 | 9.9% |
| Salt Lake | 39.6% | 932,365 | 71.6% ± 2.9% | 667,600 | 40.8% |
| Southeastern | 2.3% | 53,675 | 62.8% ± 5.9% | 33,700 | 2.1% |
| Southwest | 6.5% | 154,152 | 67.7% ± 5.8% | 104,300 | 6.4% |
| Summit | 1.4% | 32,831 | 77.6% ± 5.0% | 25,500 | 1.6% |
| Tooele | 2.0% | 46,815 | 71.1% ± 4.7% | 33,300 | 2.0% |
| TriCounty | 1.8% | 42,241 | 67.5% ± 5.6% | 28,500 | 1.7% |
| Utah County | 17.0% | 400,670 | 70.4% ± 3.6% | 282,000 | 17.2% |
| Wasatch | 0.7% | 17,179 | 63.8% ± 5.6% | 11,000 | 0.7% |
| Weber-Morgan | 8.9% | 209,593 | 67.5% ± 6.2% | 141,400 | 8.6% |
| Total, All Utahns | 100.0% | 2,354,775 | 69.4% ± 1.6% | 1,635,100 | 100.0% |
| Annual Household Income | | | | | |
| Under \$20,000 | 9.9% | 232,800 | 69.3% ± 5.0% | 161,300 | 9.9% |
| \$20,000 to <\$45,000 | 30.7% | 722,400 | 67.7% ± 3.3% | 489,300 | 30.0% |
| \$45,000 to <\$65,000 | 23.5% | 552,500 | 70.3% ± 3.6% | 388,300 | 23.8% |
| \$65,000 and Over | 36.0% | 847,100 | 70.0% ± 3.0% | 593,000 | 36.3% |
| Total, All Utahns | 100.0% | 2,354,800 | 69.4% ± 1.6% | 1,635,100 | 100.0% |
| Health Insurance Coverage | | | | | |
| Insured | 90.9% | 2,140,300 | 70.9% ± 1.7% | 1,516,600 | 93.0% |
| Uninsured | 9.1% | 214,500 | 52.9% ± 5.9% | 113,500 | 7.0% |
| Total, All Utahns | 100.0% | 2,354,800 | 69.4% ± 1.6% | 1,635,100 | 100.0% |

1 Population estimates of sex, age groups, and LHD based on 2003 Baseline Projections, Governor's Office of Planning and Budget, UPED Model System; all others based on the 2003 UHSS and rounded to the nearest 100 persons.

2 Plus or minus 95% confidence interval.

3 Rounded to the nearest 100 persons.

4 Figures in these columns may not sum to the total because of data weighting and missing values on the grouping variables.

5 These rates have not been age-adjusted. Age-adjusted rates are available upon request.



Figure 8.1 Percentage of Persons Who Had No Usual Place of Medical Care, Utah, 2001 and 2003

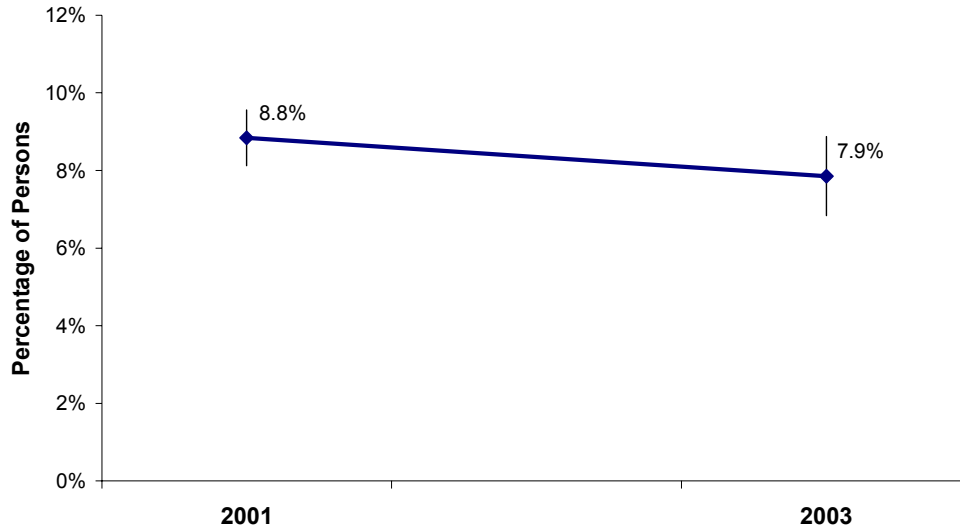
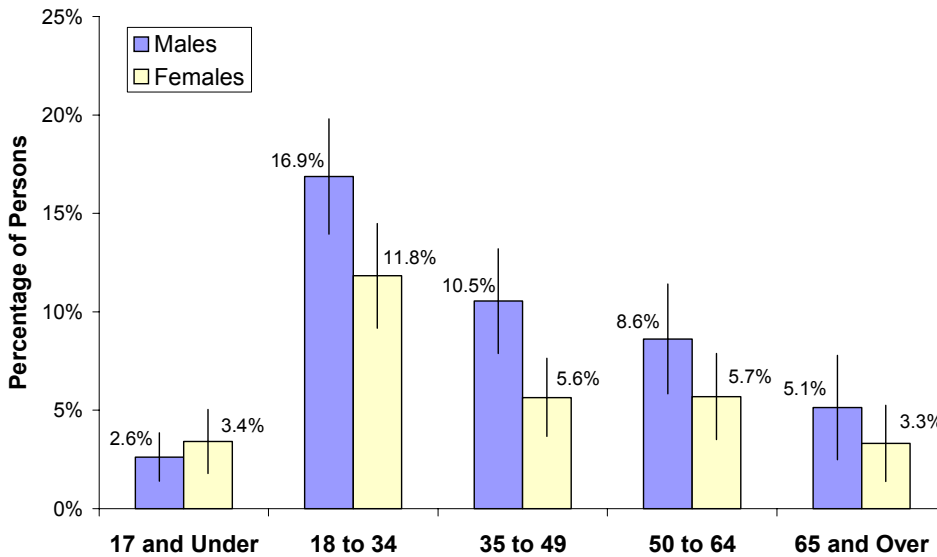


Figure 8.2 Percentage of Persons Who Had No Usual Place of Medical Care by Age and Sex, Utah, 2003



- There was a slight drop in the percentage of persons without a usual place of medical care between 2001 and 2003; however, the decrease was more than offset by the percentage of Utahns who indicated that their usual source of care was a hospital emergency department (see page 24).
- Males aged 18 to 34 were the most likely to not have a usual place of care.



Table 8. Place of Care: Percentage of Persons Who Had No Usual Place of Medical Care by Selected Demographic Characteristics, Utah Residents, 2003.

| Demographic Subgroup | Utah Population Distribution | | Survey Estimates of Utahns With No Usual Place of Medical Care | | |
|--|------------------------------|--------------------------------|--|----------------------------------|---|
| | Percentage Distribution | Number of Persons ¹ | Percentage of Persons With No Usual Place of Care ² | Number of Persons ^{3,4} | Percentage Distribution of Persons With No Usual Place of Care by Subgroup ⁴ |
| 2003 Utah Population | 100.0% | 2,354,775 | 7.9% ± 1.0% | 184,900 | 100.0% |
| Sex | | | | | |
| Male | 50.2% | 1,181,516 | 9.2% ± 1.2% | 108,500 | 58.6% |
| Female | 49.8% | 1,173,259 | 6.5% ± 1.2% | 76,500 | 41.4% |
| Total, All Utahns | 100.0% | 2,354,775 | 7.9% ± 1.0% | 184,900 | 100.0% |
| Age Group | | | | | |
| 17 and Under | 31.5% | 742,867 | 3.0% ± 1.2% | 22,300 | 12.0% |
| 18 to 34 | 29.1% | 685,764 | 14.4% ± 2.3% | 98,500 | 53.2% |
| 35 to 49 | 18.8% | 442,006 | 8.1% ± 1.9% | 35,800 | 19.3% |
| 50 to 64 | 12.1% | 285,779 | 7.1% ± 2.0% | 20,300 | 11.0% |
| 65 and Over | 8.4% | 198,359 | 4.1% ± 1.7% | 8,200 | 4.4% |
| Total, All Utahns | 100.0% | 2,354,775 | 7.9% ± 1.0% | 184,900 | 100.0% |
| Sex and Age | | | | | |
| Males, 17 and Under | 16.2% | 381,882 | 2.6% ± 1.2% | 10,000 | 5.4% |
| Males, 18 to 34 | 14.7% | 347,144 | 16.9% ± 2.9% | 58,600 | 31.6% |
| Males, 35 to 49 | 9.5% | 223,919 | 10.5% ± 2.7% | 23,600 | 12.7% |
| Males 50 to 64 | 6.0% | 141,427 | 8.6% ± 2.8% | 12,200 | 6.6% |
| Males, 65 and Over | 3.7% | 87,144 | 5.1% ± 2.7% | 4,500 | 2.4% |
| Females, 17 and Under | 15.3% | 360,985 | 3.4% ± 1.6% | 12,300 | 6.6% |
| Females, 18 to 34 | 14.4% | 338,620 | 11.8% ± 2.7% | 40,000 | 21.6% |
| Females, 35 to 49 | 9.3% | 218,087 | 5.6% ± 2.0% | 12,300 | 6.6% |
| Females 50 to 64 | 6.1% | 144,352 | 5.7% ± 2.2% | 8,200 | 4.4% |
| Females, 65 and Over | 4.7% | 111,215 | 3.3% ± 1.9% | 3,700 | 2.0% |
| Total, All Utahns | 100.0% | 2,354,775 | 7.9% ± 1.0% | 184,900 | 100.0% |
| Local Health District⁵ | | | | | |
| Bear River | 6.1% | 143,593 | 5.5% ± 2.9% | 7,900 | 4.3% |
| Central | 2.9% | 69,140 | 6.7% ± 3.5% | 4,600 | 2.5% |
| Davis | 10.7% | 252,521 | 3.8% ± 1.8% | 9,600 | 5.2% |
| Salt Lake | 39.6% | 932,365 | 9.6% ± 1.9% | 89,200 | 48.1% |
| Southeastern | 2.3% | 53,675 | 9.5% ± 3.3% | 5,100 | 2.8% |
| Southwest | 6.5% | 154,152 | 6.7% ± 3.0% | 10,300 | 5.6% |
| Summit | 1.4% | 32,831 | 8.0% ± 4.0% | 2,600 | 1.4% |
| Tooele | 2.0% | 46,815 | 7.5% ± 2.9% | 3,500 | 1.9% |
| TriCounty | 1.8% | 42,241 | 5.9% ± 3.0% | 2,500 | 1.3% |
| Utah County | 17.0% | 400,670 | 9.0% ± 3.0% | 36,100 | 19.5% |
| Wasatch | 0.7% | 17,179 | 7.4% ± 2.9% | 1,300 | 0.7% |
| Weber-Morgan | 8.9% | 209,593 | 6.1% ± 2.8% | 12,700 | 6.9% |
| Total, All Utahns | 100.0% | 2,354,775 | 7.9% ± 1.0% | 184,900 | 100.0% |
| Annual Household Income | | | | | |
| Under \$20,000 | 9.9% | 232,800 | 10.0% ± 3.3% | 23,400 | 12.7% |
| \$20,000 to <\$45,000 | 30.7% | 722,400 | 10.5% ± 2.5% | 76,100 | 41.3% |
| \$45,000 to <\$65,000 | 23.5% | 552,500 | 6.0% ± 1.8% | 33,000 | 17.9% |
| \$65,000 and Over | 36.0% | 847,100 | 6.1% ± 1.5% | 51,700 | 28.1% |
| Total, All Utahns | 100.0% | 2,354,800 | 7.9% ± 1.0% | 184,900 | 100.0% |
| Health Insurance Coverage | | | | | |
| Insured | 90.9% | 2,140,300 | 6.0% ± 0.9% | 128,000 | 69.8% |
| Uninsured | 9.1% | 214,500 | 25.8% ± 5.9% | 55,300 | 30.2% |
| Total, All Utahns | 100.0% | 2,354,800 | 7.9% ± 1.0% | 184,900 | 100.0% |

¹ Population estimates of sex, age groups, and LHD based on 2003 Baseline Projections, Governor's Office of Planning and Budget, UPED Model System; all others based on the 2003 UHSS and rounded to the nearest 100 persons.

² Plus or minus 95% confidence interval.

³ Rounded to the nearest 100 persons.

⁴ Figures in these columns may not sum to the total because of data weighting and missing values on the grouping variables.

⁵ These rates have not been age-adjusted. Age-adjusted rates are available upon request.



Figure 9.1 Percentage of Persons Whose Usual Point of Access to Medical Care Was a Hospital Emergency Department or an Urgent Care Center, Utah, 2001 and 2003

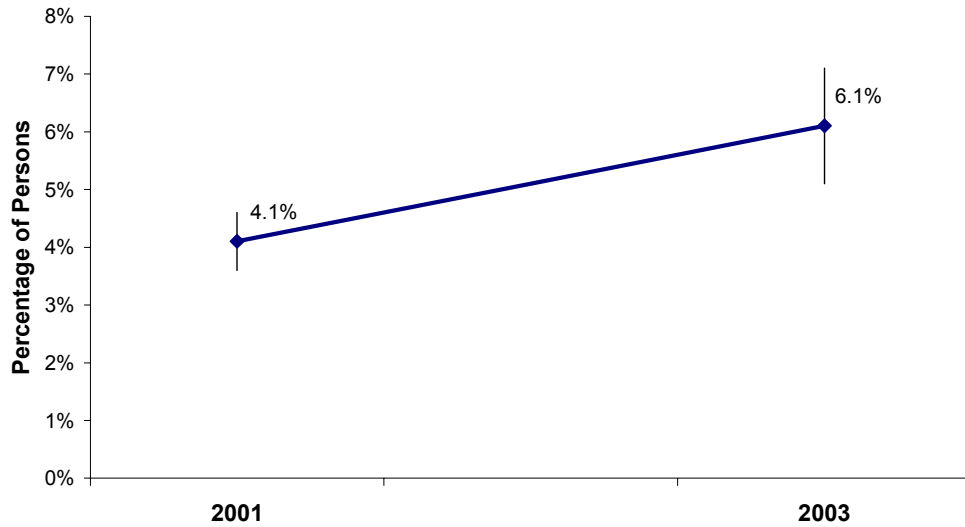
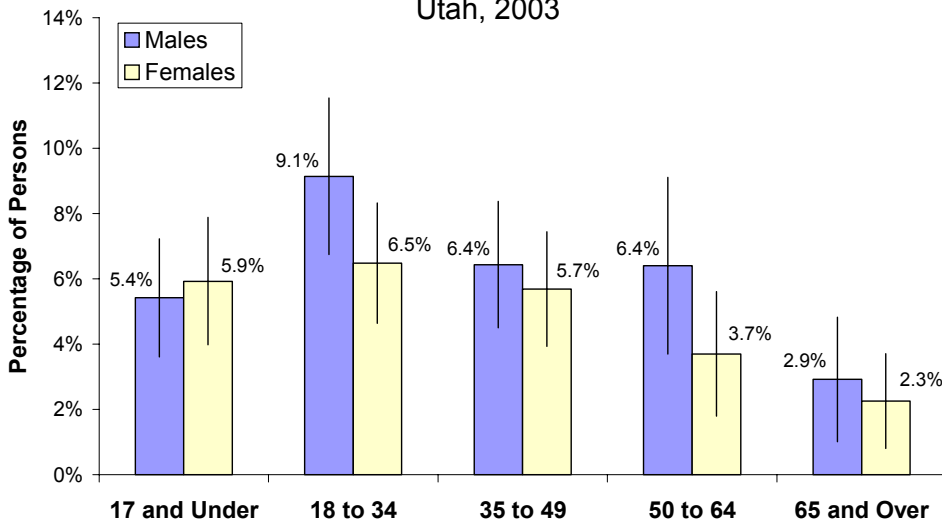


Figure 9.2 Percentage of Persons Whose Usual Point of Access to Medical Care Was a Hospital Emergency Department or an Urgent Care Center by Age and Sex, Utah, 2003



- Those aged 18 to 34 were most likely to use a hospital emergency department or urgent care center as their usual point of access.
- With the exception of those 17 and under, men were more likely than women to use an emergency department or urgent care center as their primary source of medical care.



Table 9. Point of Access to Medical Care: Percentage of Persons Whose Usual Point of Access to Medical Care Was a Hospital Emergency Department or an Urgent Care Center by Selected Demographic Characteristics, Utah Residents, 2003.

| Demographic Subgroup | Utah Population Distribution | | Survey Estimates of Utahns Who Accessed Care in ED or Urgent Care Center | | |
|--|------------------------------|--------------------------------|--|----------------------------------|---|
| | Percentage Distribution | Number of Persons ¹ | Percentage of Persons Who Accessed Care in ED or Urgent Care Center ² | Number of Persons ^{3,4} | Percentage Distribution of Persons Who Accessed Care in ED or Urgent Care Center by Subgroup ⁴ |
| 2003 Utah Population | 100.0% | 2,354,775 | 6.1% ± 1.0% | 143,600 | 100.0% |
| Sex | | | | | |
| Male | 50.2% | 1,181,516 | 6.6% ± 1.2% | 78,600 | 54.7% |
| Female | 49.8% | 1,173,259 | 5.5% ± 1.1% | 65,100 | 45.3% |
| Total, All Utahns | 100.0% | 2,354,775 | 6.1% ± 1.0% | 143,600 | 100.0% |
| Age Group | | | | | |
| 17 and Under | 31.5% | 742,867 | 5.7% ± 1.7% | 42,100 | 29.6% |
| 18 to 34 | 29.1% | 685,764 | 7.8% ± 1.8% | 53,700 | 37.8% |
| 35 to 49 | 18.8% | 442,006 | 6.1% ± 1.6% | 26,800 | 18.9% |
| 50 to 64 | 12.1% | 285,779 | 5.0% ± 1.8% | 14,300 | 10.1% |
| 65 and Over | 8.4% | 198,359 | 2.6% ± 1.4% | 5,100 | 3.6% |
| Total, All Utahns | 100.0% | 2,354,775 | 6.1% ± 1.0% | 143,600 | 100.0% |
| Sex and Age | | | | | |
| Males, 17 and Under | 16.2% | 381,882 | 5.4% ± 1.8% | 20,700 | 14.6% |
| Males, 18 to 34 | 14.7% | 347,144 | 9.1% ± 2.4% | 31,700 | 22.4% |
| Males, 35 to 49 | 9.5% | 223,919 | 6.4% ± 1.9% | 14,400 | 10.2% |
| Males 50 to 64 | 6.0% | 141,427 | 6.4% ± 2.7% | 9,000 | 6.3% |
| Males, 65 and Over | 3.7% | 87,144 | 2.9% ± 1.9% | 2,500 | 1.8% |
| Females, 17 and Under | 15.3% | 360,985 | 5.9% ± 1.9% | 21,400 | 15.1% |
| Females, 18 to 34 | 14.4% | 338,620 | 6.5% ± 1.8% | 21,900 | 15.4% |
| Females, 35 to 49 | 9.3% | 218,087 | 5.7% ± 1.8% | 12,400 | 8.7% |
| Females 50 to 64 | 6.1% | 144,352 | 3.7% ± 1.9% | 5,300 | 3.7% |
| Females, 65 and Over | 4.7% | 111,215 | 2.3% ± 1.4% | 2,500 | 1.8% |
| Total, All Utahns | 100.0% | 2,354,775 | 6.1% ± 1.0% | 143,600 | 100.0% |
| Local Health District⁵ | | | | | |
| Bear River | 6.1% | 143,593 | 4.2% ± 2.7% | 6,000 | 4.2% |
| Central | 2.9% | 69,140 | 3.7% ± 2.6% | 2,600 | 1.8% |
| Davis | 10.7% | 252,521 | 5.4% ± 2.8% | 13,600 | 9.5% |
| Salt Lake | 39.6% | 932,365 | 5.7% ± 1.6% | 53,400 | 37.2% |
| Southeastern | 2.3% | 53,675 | 2.7% ± 2.1% | 1,400 | 1.0% |
| Southwest | 6.5% | 154,152 | 3.7% ± 2.4% | 5,700 | 4.0% |
| Summit | 1.4% | 32,831 | 9.7% ± 5.5% | 3,200 | 2.2% |
| Tooele | 2.0% | 46,815 | 7.3% ± 3.7% | 3,400 | 2.4% |
| TriCounty | 1.8% | 42,241 | 4.0% ± 2.9% | 1,700 | 1.2% |
| Utah County | 17.0% | 400,670 | 2.6% ± 1.3% | 10,500 | 7.3% |
| Wasatch | 0.7% | 17,179 | 3.4% ± 2.4% | 600 | 0.4% |
| Weber-Morgan | 8.9% | 209,593 | 19.7% ± 6.7% | 41,400 | 28.9% |
| Total, All Utahns | 100.0% | 2,354,775 | 6.1% ± 1.0% | 143,600 | 100.0% |
| Annual Household Income | | | | | |
| Under \$20,000 | 9.9% | 232,800 | 6.9% ± 3.2% | 15,900 | 11.6% |
| \$20,000 to <\$45,000 | 30.7% | 722,400 | 5.0% ± 1.8% | 36,000 | 26.3% |
| \$45,000 to <\$65,000 | 23.5% | 552,500 | 6.7% ± 2.2% | 37,200 | 27.2% |
| \$65,000 and Over | 36.0% | 847,100 | 5.6% ± 1.7% | 47,600 | 34.8% |
| Total, All Utahns | 100.0% | 2,354,800 | 6.1% ± 1.0% | 143,600 | 100.0% |
| Health Insurance Coverage | | | | | |
| Insured | 90.9% | 2,140,300 | 5.8% ± 1.1% | 124,100 | 86.6% |
| Uninsured | 9.1% | 214,500 | 9.0% ± 3.1% | 19,200 | 13.4% |
| Total, All Utahns | 100.0% | 2,354,800 | 6.1% ± 1.0% | 143,600 | 100.0% |

1 Population estimates of sex, age groups, and LHD based on 2003 Baseline Projections, Governor's Office of Planning and Budget, UPED Model System; all others based on the 2003 UHSS and rounded to the nearest 100 persons.

2 Plus or minus 95% confidence interval.

3 Rounded to the nearest 100 persons.

4 Figures in these columns may not sum to the total because of data weighting and missing values on the grouping variables.

5 These rates have not been age-adjusted. Age-adjusted rates are available upon request.