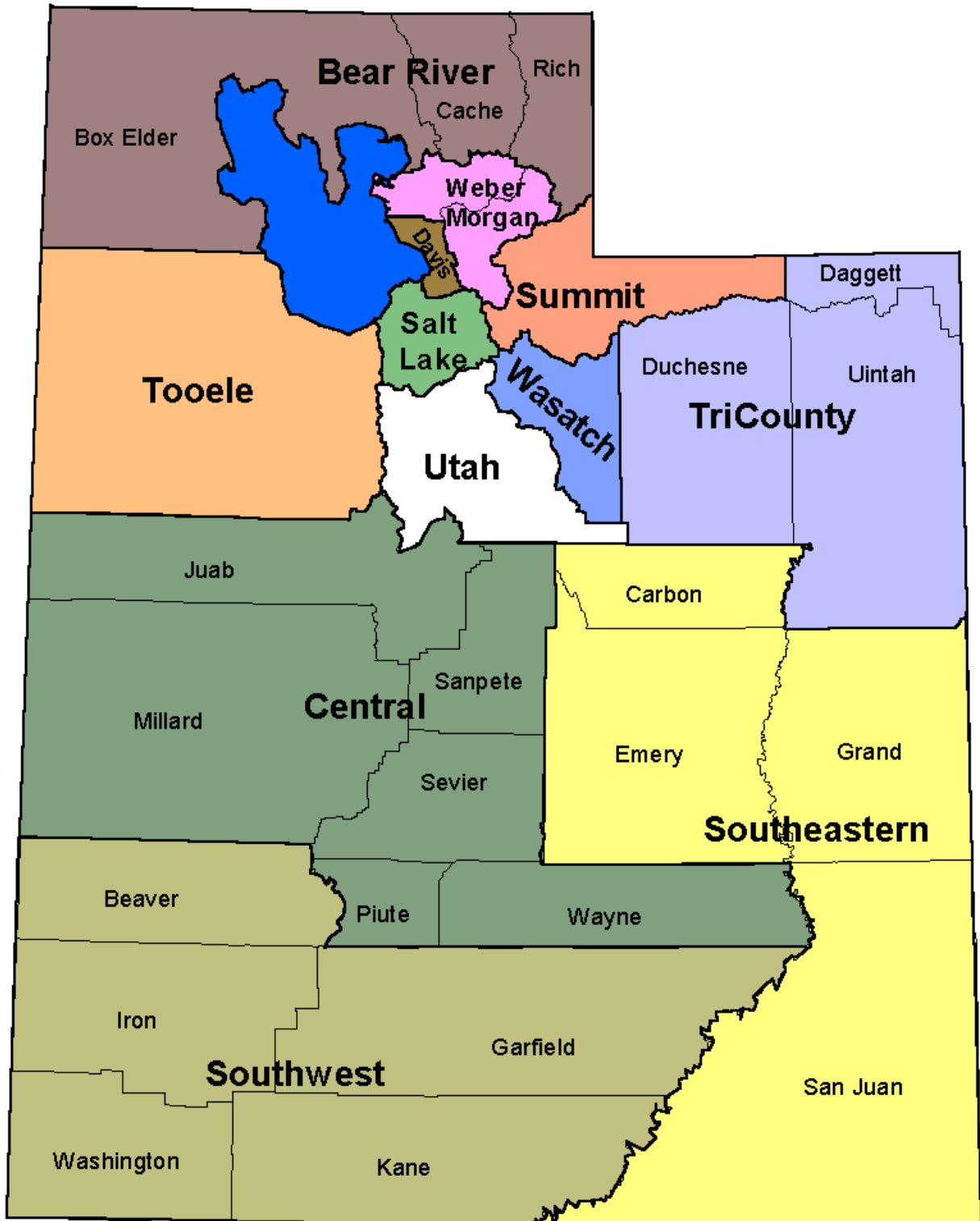


Health Status Survey Findings





Utah's 12 Local Health Districts



In the tables that follow, data are presented for each of Utah's 12 local health districts. There are six single-county and six multi-county health districts, as shown above.



Figure 1.1 Percentage of Persons Who Were in Fair or Poor Health, Utah, 1996, 2001, 2003, 2004, and 2005

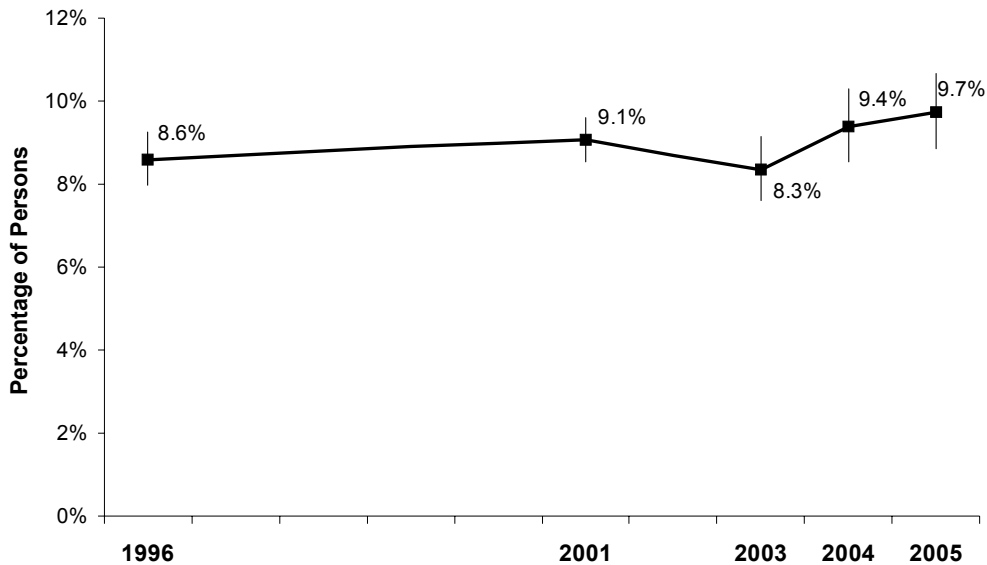
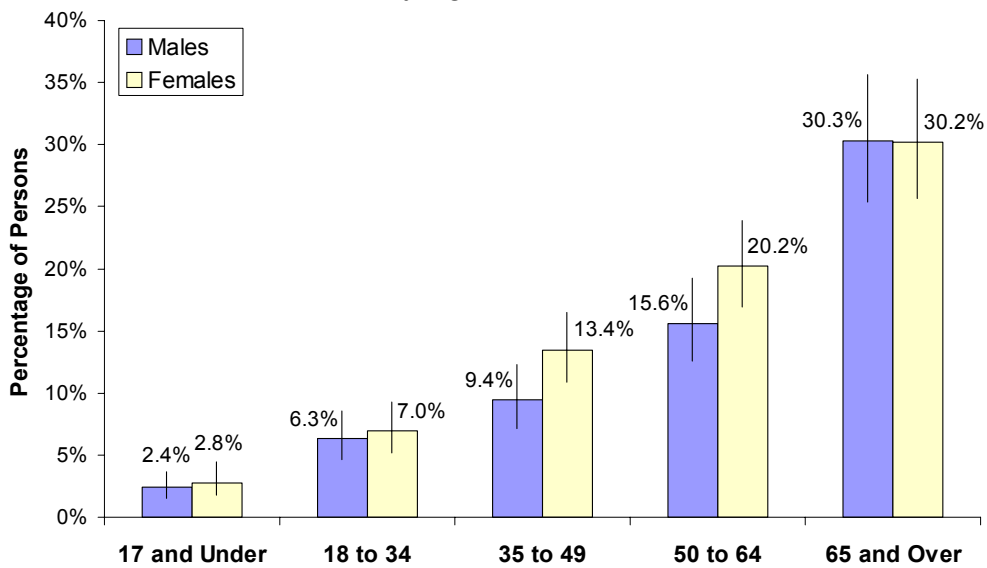


Figure 1.2 Percentage of Persons Who Were in Fair or Poor Health by Age and Sex, Utah, 2005



- Overall, the percentage of Utahns who reported that they had fair or poor physical health increased from 9.4% in 2004 to 9.7% in 2005.
- Across all age groups, females were more likely than males to report fair or poor health.



Table 1. General Health Status: Percentage of Persons Who Were in Fair or Poor Health by Selected Demographic Characteristics, Utah Residents, 2005

Demographic Subgroup	Utah Population Distribution		Survey Estimates of Utahns Who Were in Fair/Poor Health				
	Percentage Distribution	Number of Persons ¹	Percentage of Persons ²			Number of Persons ^{3,4}	Percentage Distribution of Persons in Fair/Poor Health by Subgroup ⁴
			95% Confidence Bounds				
			Lower	Upper			
2005 Utah Population	100.0%	2,528,926	9.7%	8.9%	10.7%	245,900	100.0%
Sex							
Male	50.4%	1,275,758	8.7%	7.7%	9.9%	111,400	45.3%
Female	49.6%	1,253,168	10.7%	9.6%	12.0%	134,400	54.7%
Total, All Utahns	100.0%	2,528,926	9.7%	8.9%	10.7%	245,900	100.0%
Age Group							
17 and Under	31.2%	788,452	2.6%	1.9%	3.6%	20,400	8.3%
18 to 34	29.2%	737,965	6.6%	5.3%	8.2%	48,900	20.0%
35 to 49	18.4%	465,964	11.4%	9.5%	13.5%	52,900	21.6%
50 to 64	12.8%	323,963	18.0%	15.5%	20.7%	58,200	23.8%
65 and Over	8.4%	212,582	30.2%	26.6%	34.1%	64,300	26.3%
Total, All Utahns	100.0%	2,528,926	9.7%	8.9%	10.7%	245,900	100.0%
Sex and Age							
Males, 17 and Under	16.0%	404,656	2.4%	1.6%	3.6%	9,600	3.9%
Males, 18 to 34	14.9%	376,364	6.3%	4.6%	8.6%	23,800	9.7%
Males, 35 to 49	9.4%	237,941	9.4%	7.2%	12.3%	22,400	9.2%
Males, 50 to 64	6.4%	161,253	15.6%	12.5%	19.3%	25,200	10.3%
Males, 65 and Over	3.8%	95,544	30.3%	25.4%	35.7%	28,900	11.8%
Females, 17 and Under	15.2%	383,796	2.8%	1.8%	4.4%	10,700	4.4%
Females, 18 to 34	14.3%	361,601	7.0%	5.2%	9.2%	25,100	10.3%
Females, 35 to 49	9.0%	228,023	13.4%	10.8%	16.5%	30,600	12.5%
Females, 50 to 64	6.4%	162,710	20.2%	16.9%	23.9%	32,900	13.5%
Females, 65 and Over	4.6%	117,038	30.2%	25.7%	35.2%	35,400	14.5%
Total, All Utahns	100.0%	2,528,926	9.7%	8.9%	10.7%	245,900	100.0%
Local Health District⁵							
Bear River	5.9%	149,705	6.1%	4.2%	8.9%	9,200	3.7%
Central	2.8%	71,046	13.2%	10.2%	16.8%	9,300	3.8%
Davis	10.9%	276,374	6.9%	4.9%	9.6%	19,100	7.8%
Salt Lake	38.4%	970,748	10.6%	9.1%	12.4%	103,300	42.1%
Southeastern	2.1%	52,832	14.6%	11.5%	18.3%	7,700	3.1%
Southwest	7.2%	182,295	9.5%	7.0%	12.8%	17,300	7.0%
Summit	1.4%	36,417	6.3%	4.2%	9.4%	2,300	0.9%
Tooele	2.0%	51,835	10.8%	8.2%	14.1%	5,600	2.3%
TriCounty	1.7%	42,327	12.7%	9.8%	16.3%	5,400	2.2%
Utah County	18.0%	453,977	8.6%	6.6%	11.2%	39,000	15.9%
Wasatch	0.8%	20,138	8.2%	5.8%	11.3%	1,600	0.7%
Weber-Morgan	8.7%	221,232	11.6%	8.8%	15.2%	25,800	10.5%
Total, All Utahns	100.0%	2,528,926	9.7%	8.9%	10.7%	245,900	100.0%
Health Insurance Coverage							
Insured	88.4%	2,236,100	9.2%	8.4%	10.1%	206,000	83.4%
Uninsured	11.6%	292,800	14.0%	10.8%	17.9%	40,900	16.6%
Total, All Utahns	100.0%	2,528,900	9.7%	8.9%	10.7%	245,900	100.0%
Annual Household Income							
Under \$20,000	10.1%	256,400	21.5%	17.1%	26.7%	55,200	24.4%
\$20,000 to <\$45,000	27.5%	695,800	11.6%	10.0%	13.6%	81,000	35.8%
\$45,000 to <\$65,000	23.8%	600,800	6.8%	5.5%	8.5%	41,100	18.2%
\$65,000 and Over	38.6%	975,900	5.0%	4.0%	6.3%	49,100	21.7%
Total, All Utahns	100.0%	2,528,900	9.7%	8.9%	10.7%	245,900	100.0%

See footnotes at end of table.



Table 1 (continued). General Health Status: Percentage of Persons Who Were in Fair or Poor Health by Selected Demographic Characteristics, Utah Residents, 2005

Demographic Subgroup	Utah Population Distribution		Survey Estimates of Utahns Who Were in Fair/Poor Health				
	Percentage Distribution	Number of Persons ¹	Percentage of Persons ²			Number of Persons ^{3,4}	Percentage Distribution of Persons in Fair/Poor Health by Subgroup ⁴
			95% Confidence Bounds				
			Lower	Upper			
Poverty Status							
<100% Federal Poverty Level	10.6%	268,500	13.2%	10.1%	17.1%	35,500	15.6%
101-200% Federal Poverty Level	22.1%	559,400	12.7%	10.4%	15.3%	70,900	31.2%
201-300% Federal Poverty Level	38.3%	967,500	6.5%	5.3%	7.8%	62,400	27.5%
>300% Federal Poverty Level	29.0%	733,600	7.9%	6.6%	9.5%	58,100	25.6%
Total, All Utahns	100.0%	2,528,900	9.7%	8.9%	10.7%	245,900	100.00%
Education Level							
Some High School	6.7%	117,300	24.6%	19.4%	30.6%	28,800	13.0%
High School Grad/Some College	53.9%	938,900	15.0%	13.5%	16.7%	141,300	63.7%
Technical/Vocational Degree	10.0%	174,000	9.0%	6.7%	12.1%	15,700	7.1%
4 Year College Degree or More	29.3%	510,300	7.1%	5.8%	8.7%	36,100	16.3%
Total, All Utahns Aged 18+	100.0%	1,740,500	12.9%	11.8%	14.1%	224,400	100.0%
Employment Status							
Full Time	50.5%	879,600	8.3%	7.1%	9.7%	72,900	32.7%
Part Time	16.8%	291,600	7.1%	5.3%	9.3%	20,600	9.2%
Retired	11.0%	192,000	29.0%	25.1%	33.2%	55,700	25.0%
Keeping House	11.5%	199,700	10.1%	7.7%	13.1%	20,100	9.0%
Full Time Student	3.1%	53,300	8.6%	4.1%	17.2%	4,600	2.1%
Unemployed/Other	7.1%	124,300	39.3%	33.6%	45.4%	48,900	21.9%
Total, All Utahns Aged 18+	100.0%	1,740,500	12.9%	11.8%	14.1%	224,400	100.0%
Hispanic or Latino Ethnicity							
Hispanic or Latino	10.8%	274,100	13.9%	10.1%	18.8%	38,000	15.7%
Not Hispanic or Latino	89.2%	2,254,800	9.1%	8.3%	10.0%	204,700	84.3%
Total, All Utahns	100.0%	2,528,900	9.7%	8.9%	10.7%	245,900	100.0%
Marital Status							
Married	69.5%	1,209,400	12.1%	10.8%	13.4%	145,900	65.4%
Never Married	19.2%	334,300	8.0%	6.0%	10.8%	26,900	12.1%
Divorced/Separated/Widowed	11.3%	196,700	25.5%	22.0%	29.4%	50,200	22.5%
Total, All Utahns Aged 18+	100.0%	1,740,500	12.9%	11.8%	14.1%	224,400	100.0%

1 Population estimates of sex, age groups, and local health district based on 2005 baseline projections, Governor's Office of Planning and Budget, REMI model system; all others based on the 2005 UHSS and rounded to the nearest 100 persons.

2 Asymmetric confidence bounds were calculated using the logit transformation.

3 Rounded to the nearest 100 persons.

4 Figures in these columns may not sum to the total because of data weighting and missing values on the grouping variables.

5 These rates have not been age-adjusted. Age-adjusted rates are available upon request.

- Utahns who lacked any kind of health insurance were significantly more likely than Utahns with insurance coverage to report that they were in fair or poor health (14.0% and 9.2% respectively).
- Hispanic/Latino persons were also significantly more likely to report fair or poor health than others (13.9% and 9.1% respectively).



Figure 2.1 Average Number of Days in the Previous 30 Days When Mental Health Was Poor by Age and Sex, Utah Adults, 2005

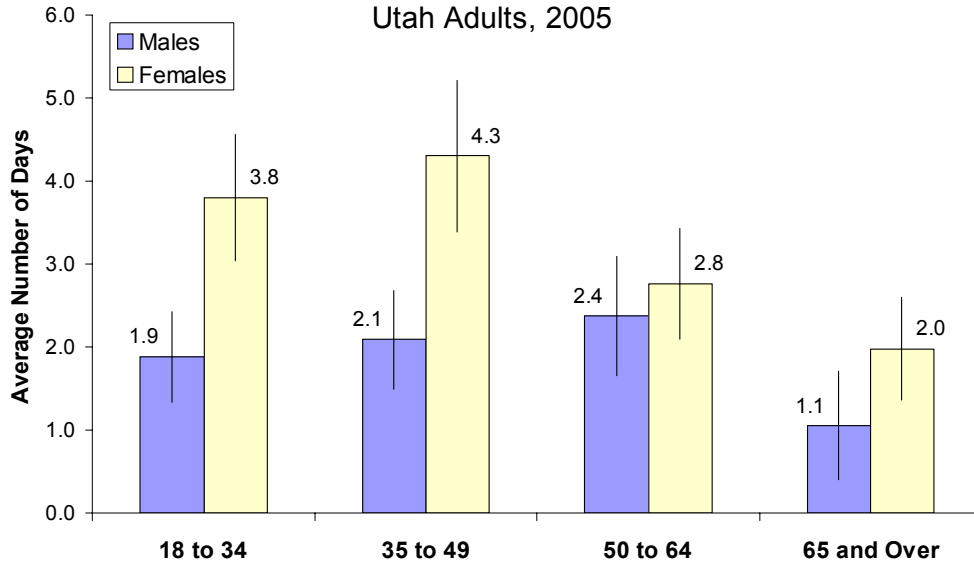
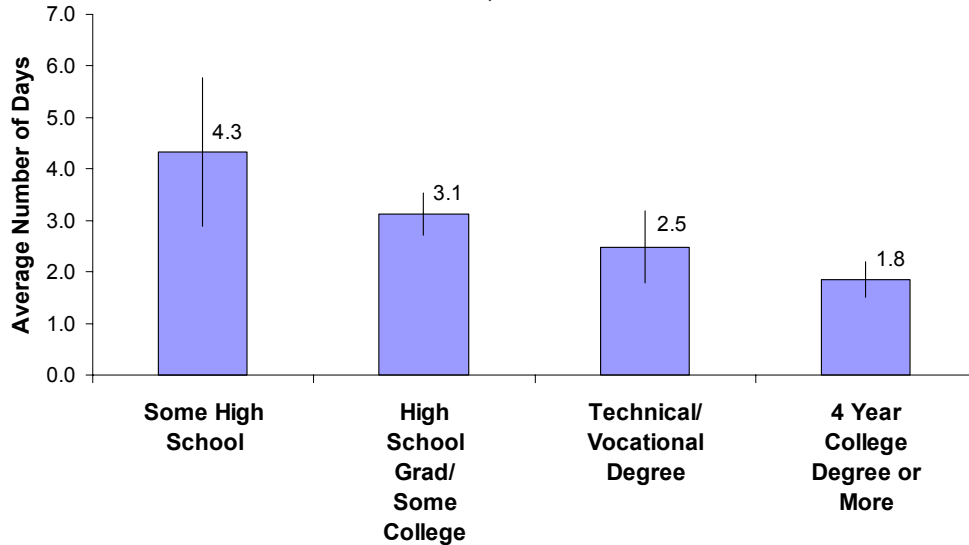


Figure 2.2 Average Number of Days in the Previous 30 Days When Mental Health Was Poor by Education, Utah Adults, 2005



- Mental health is an important component of overall well-being. Regardless of age, women in Utah who were 18 or older on average reported more days of poor mental health in the past 30 days than men (3.4 and 1.9 days, respectively).



Table 2. General Health Status: Average Number of Days in the Previous 30 Days When Mental Health Was Poor
by Selected Demographic Characteristics, Utah Residents Aged 18 and Over, 2005

Demographic Subgroup	Utah Population Distribution		Survey Estimates of Number of Days in Previous 30 Days When Mental Health Was Poor				
	Percentage Distribution	Number of Adults ¹	Avg. Number of Days ²			Total Number of Days ^{3,4}	Percentage Distribution of Number of Days by Subgroup ⁴
			95% Confidence Bounds				
			Lower	Upper			
2005 Utah Population, Adults 18+	100.0%	1,740,474	2.7	2.5	3.0	4,758,600	100.0%
Sex							
Male	50.0%	871,102	1.9	1.6	2.3	1,693,300	36.5%
Female	50.0%	869,372	3.4	3.0	3.8	2,952,100	63.5%
Total, All Utahns Aged 18+	100.0%	1,740,474	2.7	2.5	3.0	4,758,600	100.0%
Age Group							
18 to 34	42.4%	737,965	2.9	2.4	3.4	2,152,700	44.6%
35 to 49	26.8%	465,964	3.2	2.6	3.8	1,493,000	30.9%
50 to 64	18.6%	323,963	2.6	2.1	3.1	837,700	17.3%
65 and Over	12.2%	212,582	1.6	1.2	2.1	345,500	7.2%
Total, All Utahns Aged 18+	100.0%	1,740,474	2.7	2.5	3.0	4,758,600	100.0%
Sex and Age							
Males, 18 to 34	21.6%	376,364	1.9	1.3	2.4	706,500	15.0%
Males, 35 to 49	13.7%	237,941	2.1	1.5	2.7	497,000	10.5%
Males 50 to 64	9.3%	161,253	2.4	1.6	3.1	381,900	8.1%
Males, 65 and Over	5.5%	95,544	1.1	0.4	1.7	101,000	2.1%
Females, 18 to 34	20.8%	361,601	3.8	3.0	4.6	1,374,900	29.1%
Females, 35 to 49	13.1%	228,023	4.3	3.4	5.2	981,300	20.8%
Females 50 to 64	9.3%	162,710	2.8	2.1	3.4	449,400	9.5%
Females, 65 and Over	6.7%	117,038	2.0	1.4	2.6	231,500	4.9%
Total, All Utahns Aged 18+	100.0%	1,740,474	2.7	2.5	3.0	4,758,600	100.0%
Local Health District⁵							
Bear River	5.8%	101,710	2.9	2.0	3.8	295,200	6.2%
Central	2.8%	49,249	2.4	1.6	3.2	119,300	2.5%
Davis	10.7%	186,183	2.4	1.7	3.1	446,400	9.4%
Salt Lake	39.1%	680,155	2.6	2.1	3.0	1,749,500	36.9%
Southeastern	2.2%	37,604	3.4	2.5	4.4	129,200	2.7%
Southwest	7.5%	130,527	3.1	2.1	4.0	398,400	8.4%
Summit	1.5%	26,547	2.3	1.4	3.2	61,400	1.3%
Tooele	2.0%	34,392	3.2	2.3	4.1	109,600	2.3%
TriCounty	1.7%	28,971	3.4	2.4	4.3	97,300	2.1%
Utah County	17.1%	297,244	2.5	1.9	3.1	737,700	15.6%
Wasatch	0.8%	13,719	2.6	1.8	3.5	36,100	0.8%
Weber-Morgan	8.9%	154,173	3.6	2.4	4.8	562,200	11.9%
Total, All Utahns Aged 18+	100.0%	1,740,474	2.7	2.5	3.0	4,758,600	100.3%
Health Insurance Coverage							
Insured	87.0%	1,514,800	2.7	2.4	3.0	4,053,900	84.2%
Uninsured	13.0%	225,600	3.4	2.5	4.2	758,800	15.8%
Total, All Utahns Aged 18+	100.0%	1,740,500	2.7	2.5	3.0	4,758,600	100.0%
Annual Household Income							
Under \$20,000	11.5%	200,000	4.0	3.1	5.0	806,500	17.1%
\$20,000 to <\$45,000	27.8%	484,700	3.7	3.1	4.3	1,773,200	37.5%
\$45,000 to <\$65,000	23.1%	402,000	2.6	2.0	3.2	1,056,700	22.4%
\$65,000 and Over	37.6%	653,700	1.7	1.3	2.0	1,088,200	23.0%
Total, All Utahns Aged 18+	100.0%	1,740,500	2.7	2.5	3.0	4,758,600	100.0%

See footnotes at end of table.



Table 2 (continued). General Health Status: Average Number of Days in the Previous 30 Days When Mental Health Was Poor by Selected Demographic Characteristics, Utah Residents Aged 18 and Over, 2005

Demographic Subgroup	Utah Population Distribution		Survey Estimates of Number of Days in Previous 30 Days When Mental Health Was Poor				
	Percentage Distribution	Number of Adults ¹	Avg. Number of Days ²			Total Number of Days ^{3,4}	Percentage Distribution of Number of Days by Subgroup ⁴
			95% Confidence Bounds				
			Lower	Upper			
Poverty Status							
<100% Federal Poverty Level	10.0%	173,300	3.9	3.0	4.9	682,100	13.9%
101-200% Federal Poverty Level	20.2%	351,300	3.6	2.9	4.3	1,262,800	25.7%
201-300% Federal Poverty Level	34.2%	594,400	2.8	2.3	3.4	1,693,700	34.4%
>300% Federal Poverty Level	35.7%	621,500	2.1	1.7	2.4	1,279,700	26.0%
Total, All Utahns Aged 18+	100.0%	1,740,500	2.7	2.5	3.0	4,758,600	100.0%
Education Level							
Some High School	6.7%	117,300	4.3	2.9	5.8	508,700	10.6%
High School Grad/Some College	53.9%	938,900	3.1	2.7	3.5	2,928,400	60.8%
Technical/Vocational Degree	10.0%	174,000	2.5	1.8	3.2	432,700	9.0%
4 Year College Degree or More	29.3%	510,300	1.8	1.5	2.2	942,900	19.6%
Total, All Utahns Aged 18+	100.0%	1,740,500	2.7	2.5	3.0	4,758,600	100.0%
Employment Status							
Full Time	50.5%	879,600	2.6	2.2	3.0	2,256,300	47.1%
Part Time	16.8%	291,600	2.6	2.0	3.2	760,400	15.9%
Retired	11.0%	192,000	1.8	1.3	2.3	349,100	7.3%
Keeping House	11.5%	199,700	2.5	1.8	3.3	505,600	10.6%
Full Time Student	3.1%	53,300	2.3	1.3	3.2	121,900	2.5%
Unemployed/Other	7.1%	124,300	6.4	5.0	7.8	798,500	16.7%
Total, All Utahns Aged 18+	100.0%	1,740,500	2.7	2.5	3.0	4,758,600	100.0%
Hispanic or Latino Ethnicity							
Hispanic or Latino	9.5%	164,600	3.3	1.9	4.8	551,100	11.7%
Not Hispanic or Latino	90.5%	1,575,900	2.6	2.4	2.9	4,160,400	88.3%
Total, All Utahns Aged 18+	100.0%	1,740,500	2.7	2.5	3.0	4,758,600	100.0%
Marital Status							
Married	69.5%	1,209,400	2.1	1.8	2.4	2,546,400	55.0%
Never Married	19.2%	334,300	3.5	2.7	4.4	1,178,800	25.5%
Divorced/Separated/Widowed	11.3%	196,700	4.6	3.8	5.4	903,000	19.5%
Total, All Utahns Aged 18+	100.0%	1,740,500	2.7	2.5	3.0	4,758,600	100.0%

1 Population estimates of sex, age groups, and local health district based on 2005 baseline projections, Governor's Office of Planning and Budget, REMI model system; all others based on the 2005 UHSS and rounded to the nearest 100 persons.

2 Symmetric confidence bounds.

3 Rounded to the nearest 100 persons.

4 Figures in these columns may not sum to the total because of data weighting and missing values on the grouping variables.

5 These rates have not been age-adjusted. Age-adjusted rates are available upon request.

- As a percentage of the total number of poor mental health days reported, 63.5% were reported by women.
- Those who reported higher than average days of poor mental health were also more likely to: live in poverty, have lower levels of education, be unemployed, lack health insurance, and be of Hispanic or Latino ethnicity.



Figure 3a.1 Percentage of Persons With No Health Insurance Coverage, Utah, 2001, 2003, 2004, and 2005

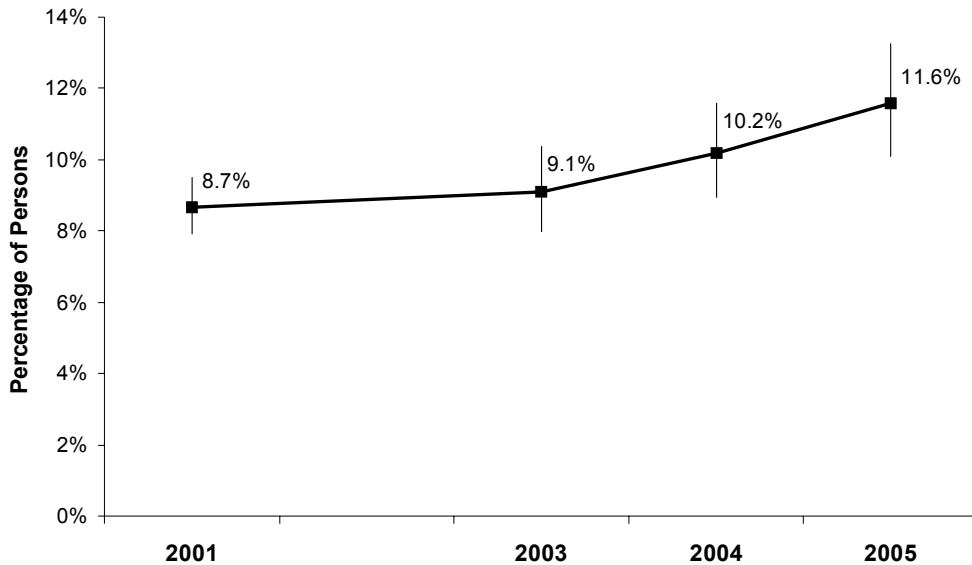
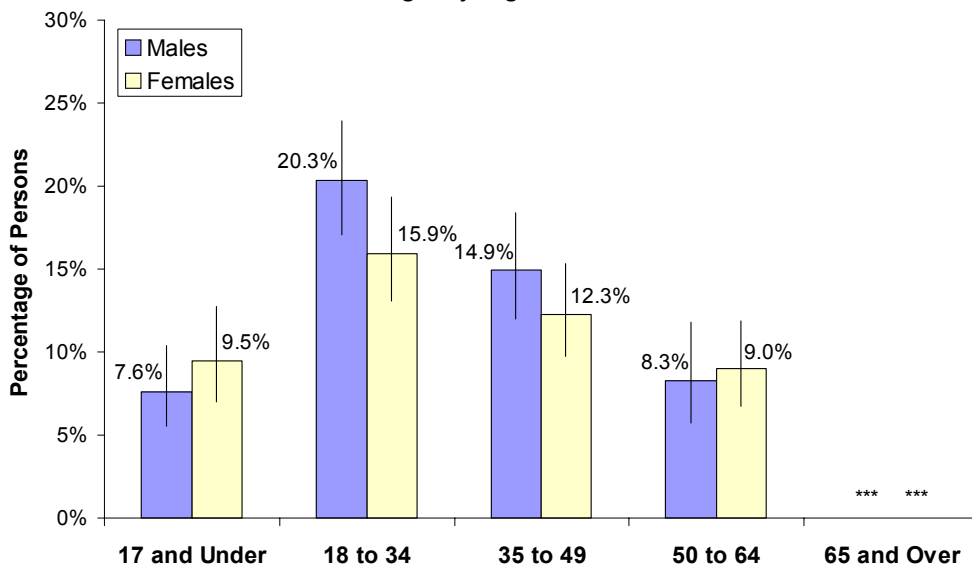


Figure 3a.2 Percentage of Persons With No Health Insurance Coverage by Age and Sex, Utah, 2005



*** Insufficient sample size for calculation of population estimates.

- Overall, the proportion of the population that lacks any kind of health insurance in Utah has been increasing. In 2005, 11.6% of Utahns did not have any kind of insurance coverage.



Health Insurance Coverage

Table 3a. Health Insurance: Percentage of Persons With No Health Insurance Coverage by Selected Demographic Characteristics, Utah Residents, 2005

Demographic Subgroup	Utah Population Distribution		Survey Estimates of Utahns With No Health Insurance Coverage				
	Percentage Distribution	Number of Persons ¹	Percentage of Persons ² 95% Confidence Bounds			Number of Persons ^{3,4}	Percentage Distribution of Persons With No Health Insurance by Subgroup ⁴
			Lower	Upper			
2005 Utah Population	100.0%	2,528,926	11.6%	10.1%	13.2%	292,800	100.0%
Sex							
Male	50.2%	1,275,758	12.2%	10.6%	14.1%	156,100	53.3%
Female	49.8%	1,253,168	10.9%	9.3%	12.8%	136,800	46.7%
Total, All Utahns	100.0%	2,528,926	11.6%	10.1%	13.2%	292,800	100.0%
Age Group							
17 and Under	31.5%	788,452	8.5%	6.6%	11.0%	67,200	22.9%
18 to 34	29.1%	737,965	18.2%	15.4%	21.2%	134,000	45.6%
35 to 49	18.8%	465,964	13.6%	11.3%	16.4%	63,500	21.6%
50 to 64	12.1%	323,963	8.6%	6.7%	11.1%	28,000	9.5%
65 and Over	8.4%	212,582	***	***	***	***	***
Total, All Utahns	100.0%	2,528,926	11.6%	10.1%	13.2%	292,800	100.0%
Sex and Age							
Males, 17 and Under	16.2%	404,656	7.6%	5.5%	10.4%	30,800	10.5%
Males, 18 to 34	14.7%	376,364	20.3%	17.1%	24.0%	76,400	26.0%
Males, 35 to 49	9.5%	237,941	14.9%	12.0%	18.4%	35,500	12.1%
Males 50 to 64	6.0%	161,253	8.3%	5.8%	11.8%	13,400	4.6%
Males, 65 and Over	3.7%	95,544	***	***	***	***	***
Females, 17 and Under	15.3%	383,796	9.5%	7.0%	12.7%	36,400	12.4%
Females, 18 to 34	14.4%	361,601	15.9%	13.1%	19.3%	57,600	19.6%
Females, 35 to 49	9.3%	228,023	12.3%	9.8%	15.3%	28,000	9.5%
Females 50 to 64	6.1%	162,710	9.0%	6.7%	11.9%	14,600	5.0%
Females, 65 and Over	4.7%	117,038	***	***	***	***	***
Total, All Utahns	100.0%	2,528,926	11.6%	10.1%	13.2%	292,800	100.0%
Local Health District ⁵							
Bear River	6.1%	149,705	9.9%	6.1%	15.9%	14,900	5.1%
Central	2.9%	71,046	14.6%	10.1%	20.7%	10,400	3.5%
Davis	10.7%	276,374	8.4%	5.2%	13.1%	23,200	7.9%
Salt Lake	39.6%	970,748	11.4%	8.8%	14.6%	110,500	37.7%
Southeastern	2.3%	52,832	12.5%	8.7%	17.7%	6,600	2.3%
Southwest	6.5%	182,295	14.7%	10.3%	20.6%	26,800	9.1%
Summit	1.4%	36,417	12.7%	7.7%	20.2%	4,600	1.6%
Tooele	2.0%	51,835	8.1%	5.1%	12.7%	4,200	1.4%
TriCounty	1.8%	42,327	11.8%	8.1%	17.0%	5,000	1.7%
Utah County	17.0%	453,977	11.8%	8.7%	15.8%	53,500	18.3%
Wasatch	0.7%	20,138	9.9%	6.4%	15.0%	2,000	0.7%
Weber-Morgan	8.9%	221,232	14.2%	8.3%	23.2%	31,400	10.7%
Total, All Utahns	100.0%	2,528,926	11.6%	10.1%	13.2%	292,800	100.0%
Annual Household Income							
Under \$20,000	10.1%	256,400	32.8%	25.8%	40.6%	84,100	29.4%
\$20,000 to <\$45,000	27.5%	695,800	17.9%	14.4%	21.9%	124,300	43.4%
\$45,000 to <\$65,000	23.8%	600,800	6.6%	4.8%	9.1%	39,900	13.9%
\$65,000 and Over	38.6%	975,900	3.9%	2.6%	5.7%	37,900	13.2%
Total, All Utahns	100.0%	2,528,900	11.6%	10.1%	13.2%	292,800	100.0%
Poverty Status							
<100% Federal Poverty Level	10.6%	268,500	36.4%	28.5%	45.0%	97,700	33.9%
101-200% Federal Poverty Level	22.1%	559,400	17.0%	13.5%	21.2%	95,200	33.1%
201-300% Federal Poverty Level	38.3%	967,500	7.5%	5.8%	9.8%	72,900	25.3%
>300% Federal Poverty Level	29.0%	733,600	3.0%	2.1%	4.2%	22,000	7.6%
Total, All Utahns	100.0%	2,528,900	11.6%	10.1%	13.2%	292,800	100.0%

See footnotes at end of table.



Table 3a (continued). Health Insurance: Percentage of Persons With No Health Insurance Coverage by Selected Demographic Characteristics, Utah Residents, 2005

Demographic Subgroup	Utah Population Distribution		Survey Estimates of Utahns With No Health Insurance Coverage				
	Percentage Distribution	Number of Persons ¹	Percentage of Persons ² 95% Confidence Bounds			Number of Persons ^{3,4}	Percentage Distribution of Persons With No Health Insurance by Subgroup ⁴
			Lower	Upper			
Education Level							
Some High School	6.7%	117,300	35.6%	27.1%	45.2%	41,800	18.7%
High School Grad/Some College	53.9%	938,900	15.1%	13.1%	17.3%	141,700	63.3%
Technical/Vocational Degree	10.0%	174,000	10.7%	7.7%	14.5%	18,600	8.3%
4 Year College Degree or More	29.3%	510,300	4.3%	3.1%	5.8%	21,800	9.7%
Total, All Utahns Aged 18+	100.0%	1,740,500	13.0%	11.4%	14.7%	225,600	100.0%
Employment Status							
Full Time	50.5%	879,600	12.7%	10.6%	15.1%	111,700	50.0%
Part Time	16.8%	291,600	15.3%	12.3%	18.8%	44,600	19.9%
Retired	11.0%	192,000	1.5%	0.7%	3.4%	3,000	1.3%
Keeping House	11.5%	199,700	13.1%	10.0%	16.9%	26,100	11.7%
Full Time Student	3.1%	53,300	16.7%	10.8%	25.0%	8,900	4.0%
Unemployed/Other	7.1%	124,300	23.6%	18.4%	29.6%	29,300	13.1%
Total, All Utahns Aged 18+	100.0%	1,740,500	13.0%	11.4%	14.7%	225,600	100.0%
Hispanic or Latino Ethnicity							
Hispanic or Latino	10.8%	274,100	37.4%	28.8%	46.8%	102,400	34.7%
Not Hispanic or Latino	89.2%	2,254,800	8.5%	7.4%	9.8%	192,300	65.3%
Total, All Utahns	100.0%	2,528,900	11.6%	10.1%	13.2%	292,800	100.0%
Marital Status							
Married	69.5%	1,209,400	10.8%	9.1%	12.8%	131,000	58.4%
Never Married	19.2%	334,300	18.9%	15.4%	23.0%	63,200	28.2%
Divorced/Separated/Widowed	11.3%	196,700	15.2%	12.3%	18.8%	30,000	13.4%
Total, All Utahns Aged 18+	100.0%	1,740,500	13.0%	11.4%	14.7%	225,600	100.0%

1 Population estimates of sex, age groups, and local health district based on 2005 baseline projections, Governor's Office of Planning and Budget, REMI model system; all others based on the 2005 UHSS and rounded to the nearest 100 persons.

2 Asymmetric confidence bounds were calculated using the logit transformation.

3 Rounded to the nearest 100 persons.

4 Figures in these columns may not sum to the total because of data weighting and missing values on the grouping variables.

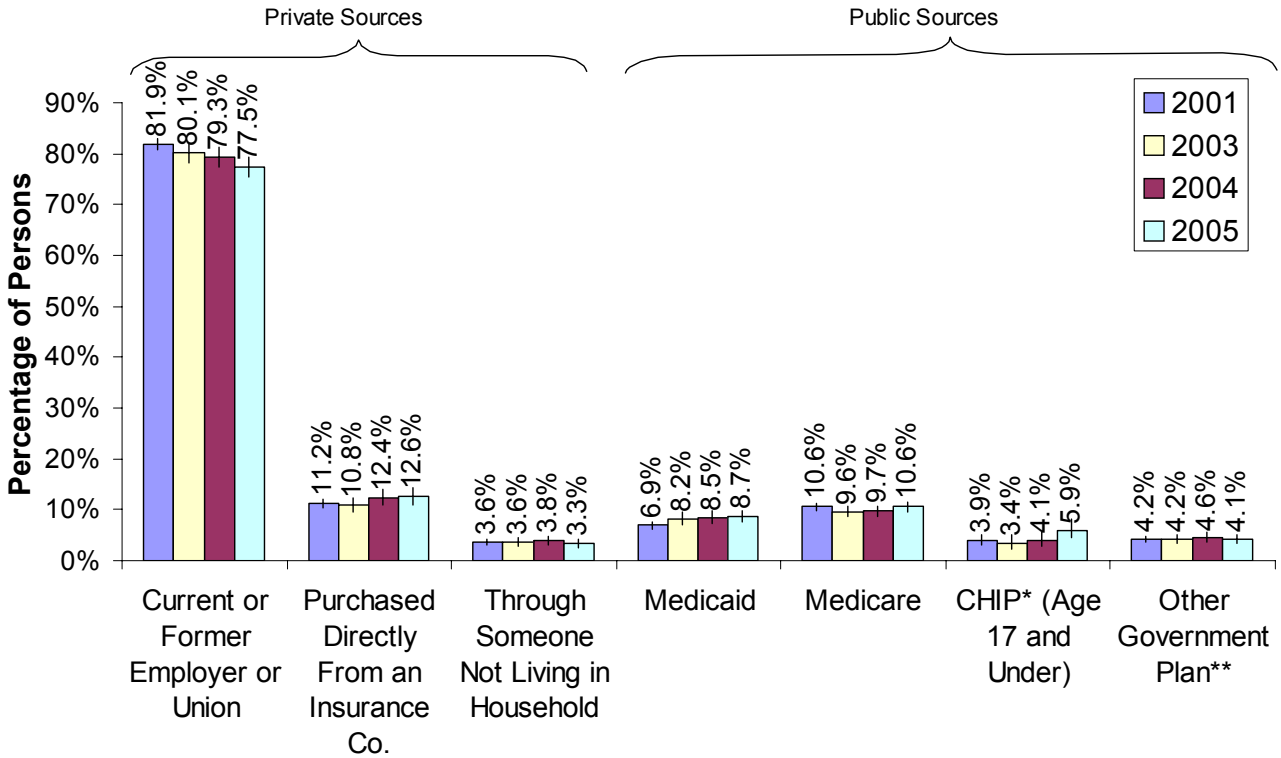
5 These rates have not been age-adjusted. Age-adjusted rates are available upon request.

*** Insufficient sample size for calculation of population estimates.

- Utahns aged 18 to 34 made up nearly one-half (45.6%) of all Utahns who were uninsured.
- Household income was negatively associated with health insurance coverage. Only 3.9% of those living in households with incomes \$65,000 or over were uninsured, compared to 32.8% of those in households with incomes under \$20,000.
- As a proportion of all uninsured Utahns, those living in households at or below 200% poverty made up (67.0%).
- For adults 18 years and over, those who had less than a high school education were the most likely to lack health insurance (35.6%). However, adults who had completed at least a high school education accounted for most uninsured adults (81.3%).
- An estimated 10.8% of Utah's population is Hispanic or Latino, however this group makes up 34.7% of all uninsured Utahns.



Figure 3b.1 Percentage of Persons With Each Type of Health Insurance, Utah Insured Population, 2001, 2003, 2004, and 2005



* Children's Health Insurance Program.

** "Another government plan" includes Military, Tricare, or the V.A.

Note: Bars are not mutually exclusive, both by definition, and because a person may be covered by more than one type of plan.

- The most common type of insurance coverage for Utahns was provided through a current or former employer or union (77.5%), however, the proportion of insured Utahns receiving this type of insurance has decreased by 5.4% since 2001.



Table 3b. Health Insurance Carrier: Percentage of Persons With Each Type of Health Insurance Coverage by Poverty Status, Utahns With Health Insurance, 2005

Demographic Subgroup	Survey Estimates of Insured Utahns With Each Type of Plan			
	Percentage of Persons With Each Type of Plan ^{1,2}			Number of Persons With Each Type of Plan ³
	95% Confidence Bounds			
	Lower	Upper		
Type of Plan				
Current or Former Employer or Union	77.5%	75.4%	79.4%	1,732,900
Purchased Directly From an Insurance Company	12.6%	11.1%	14.4%	282,200
Through Someone Not Living in Household	3.3%	2.6%	4.2%	74,100
Medicaid	8.7%	7.6%	9.9%	193,800
Medicare	10.6%	9.6%	11.6%	236,400
CHIP (Ages 17 and Under) ⁴	5.9%	4.4%	8.0%	42,800
Other Government Plan ⁵	4.1%	3.3%	5.0%	91,100

Demographic Subgroup	Utah Population Distribution		Survey Estimates of Insured Utahns With Each Type of Plan				
	Percentage Distribution	Number of Insured Persons ⁶	Percentage of Insured Persons ¹			Number of Insured Persons ^{3,7}	Percentage Distribution of Insured Persons by Subgroup ⁷
			95% Confidence Bounds				
			Lower	Upper			
Current or Former Employer or Union by Poverty Status							
<100% Federal Poverty Level	7.5%	166,800	30.9%	23.0%	40.2%	51,600	3.0%
101-200% Federal Poverty Level	20.9%	466,900	68.9%	63.3%	73.9%	321,600	18.4%
201-300% Federal Poverty Level	40.1%	896,600	83.9%	80.2%	87.0%	751,900	43.0%
>300% Federal Poverty Level	31.6%	705,700	88.2%	85.5%	90.5%	622,700	35.6%
Total, All Insured Utahns	100.0%	2,236,100	77.5%	75.4%	79.4%	1,732,900	100.0%
Purchased Directly From an Insurance Company by Poverty Status							
<100% Federal Poverty Level	7.5%	166,800	16.9%	10.7%	25.8%	28,200	10.4%
101-200% Federal Poverty Level	20.9%	466,900	11.9%	8.7%	16.1%	55,700	20.5%
201-300% Federal Poverty Level	40.1%	896,600	13.2%	10.3%	16.8%	118,400	43.6%
>300% Federal Poverty Level	31.6%	705,700	9.8%	7.8%	12.4%	69,400	25.5%
Total, All Insured Utahns	100.0%	2,236,100	12.6%	11.1%	14.4%	282,200	100.0%
Through Someone Not Living in Household by Poverty Status							
<100% Federal Poverty Level	7.5%	166,800	7.8%	4.7%	12.5%	12,900	16.2%
101-200% Federal Poverty Level	20.9%	466,900	5.1%	3.2%	8.1%	23,900	30.0%
201-300% Federal Poverty Level	40.1%	896,600	3.6%	2.3%	5.6%	32,200	40.5%
>300% Federal Poverty Level	31.6%	705,700	1.5%	0.9%	2.4%	10,600	13.3%
Total, All Insured Utahns	100.0%	2,236,100	3.3%	2.6%	4.2%	74,100	100.0%
Medicaid by Poverty Status							
<100% Federal Poverty Level	7.5%	166,800	46.6%	38.3%	55.1%	77,700	39.6%
101-200% Federal Poverty Level	20.9%	466,900	14.9%	11.6%	19.0%	69,600	35.5%
201-300% Federal Poverty Level	40.1%	896,600	3.6%	2.6%	5.0%	32,300	16.5%
>300% Federal Poverty Level	31.6%	705,700	2.4%	1.7%	3.4%	16,700	8.5%
Total, All Insured Utahns	100.0%	2,236,100	8.7%	7.6%	9.9%	193,800	100.0%
Medicare by Poverty Status							
<100% Federal Poverty Level	7.5%	166,800	10.8%	7.8%	14.8%	18,000	9.1%
101-200% Federal Poverty Level	20.9%	466,900	12.2%	9.9%	15.0%	57,000	28.9%
201-300% Federal Poverty Level	40.1%	896,600	5.2%	4.2%	6.4%	46,700	23.7%
>300% Federal Poverty Level	31.6%	705,700	10.7%	9.0%	12.6%	75,500	38.3%
Total, All Insured Utahns	100.0%	2,236,100	10.6%	9.6%	11.6%	236,400	100.0%

See footnotes at end of table.



Table 3b (continued). Health Insurance Carrier: Percentage of Persons With Each Type of Health Insurance Coverage by Poverty Status, Utahns With Health Insurance, 2005

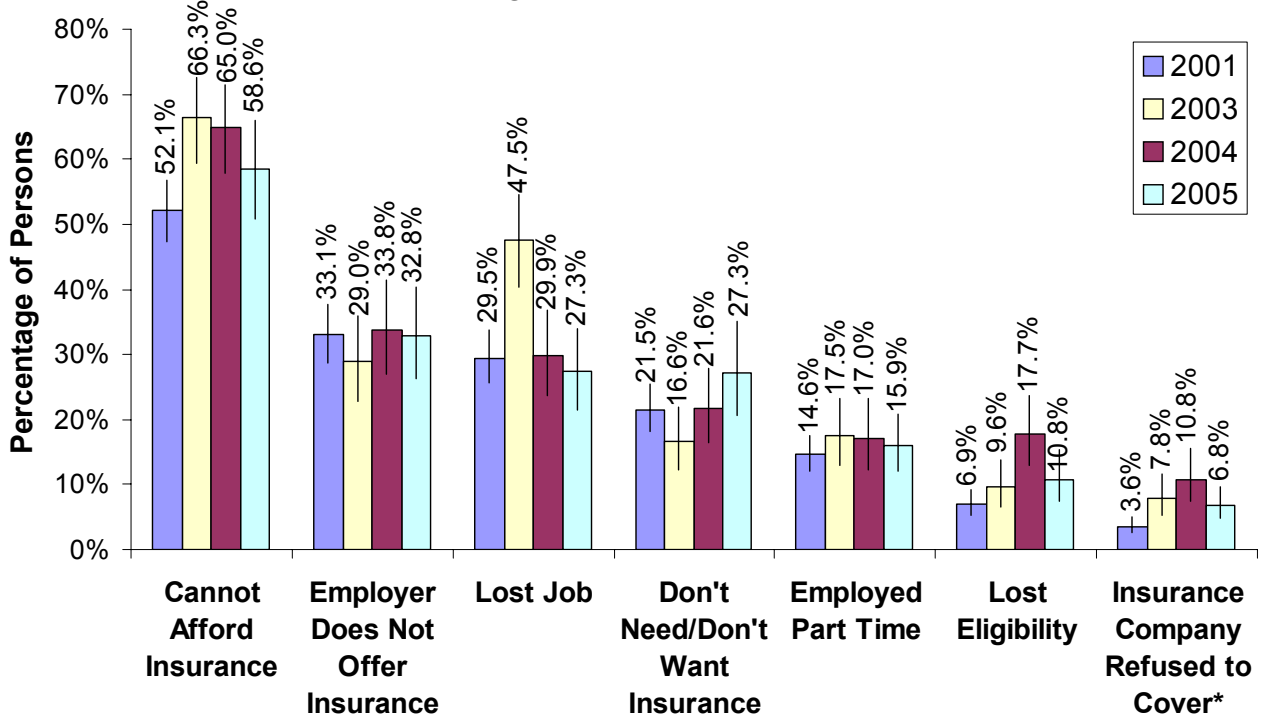
Demographic Subgroup	Utah Population Distribution		Survey Estimates of Insured Utahns With Each Type of Plan				
	Percentage Distribution	Number of Insured Persons ⁶	Percentage of Insured Persons ¹			Number of Insured Persons ^{3,7}	Percentage Distribution of Insured Persons by Subgroup ⁷
			95% Confidence Bounds				
			Lower	Upper			
CHIP⁴ by Poverty Status							
<100% Federal Poverty Level	9.5%	68,500	17.0%	10.1%	27.3%	11,700	26.3%
101-200% Federal Poverty Level	25.1%	181,200	14.8%	9.7%	22.0%	26,800	60.2%
201-300% Federal Poverty Level	49.3%	355,200	1.6%	0.8%	3.3%	5,600	12.6%
>300% Federal Poverty Level	16.1%	116,300	***	***	***	***	***
Total, All Insured Utahns Aged 17 and Under	100.0%	721,200	5.9%	4.4%	8.0%	42,800	100.0%
Other Government Plan⁵ by Poverty Status							
<100% Federal Poverty Level	7.5%	166,800	2.0%	0.9%	4.7%	3,400	4.3%
101-200% Federal Poverty Level	20.9%	466,900	3.2%	2.0%	5.0%	14,700	18.4%
201-300% Federal Poverty Level	40.1%	896,600	3.0%	1.9%	4.8%	26,800	33.5%
>300% Federal Poverty Level	31.6%	705,700	5.0%	3.6%	6.8%	35,100	43.9%
Total, All Insured Utahns	100.0%	2,236,100	4.1%	3.3%	5.0%	91,100	100.0%

1 Asymmetric confidence bounds were calculated using the logit transformation.
 2 Because individuals could have more than one plan, figures in this column do not sum to 100%.
 3 Rounded to the nearest 100 persons
 4 Children's Health Insurance Program.
 5 "Other government plan" includes Military, Tricare, or the V.A.
 6 Population estimates based on the 2005 UHSS and rounded to the nearest 100 persons.
 7 Figures in these columns may not sum to the total because of data weighting and missing values on the grouping variables.
 *** Insufficient sample size for calculation of population estimates.
 Note: Estimates are not mutually exclusive, both by definition, and because a person may be covered by more than one type of plan.

- For insured Utahns, as income (as a percentage of the federal poverty level) increased, the likelihood of having insurance through an employer or union also increased.
- 39.6% of insured Utahns who had Medicaid lived at or below 100% of poverty.



Figure 3c.1 Percentage of Persons Who Gave Each Reason as a Reason That They Lacked Health Insurance, Utahns Who Lacked Health Insurance Coverage, 2001, 2003, 2004, and 2005



* Reasons an insurance company would refuse to cover an individual included 1) a pre-existing condition, 2) the individual exceeded lifetime benefits, or 3) some other reason.

Note: Because individuals could choose more than one reason, figures sum to greater than 100%.

- The reasons for lacking health insurance (as measured by the Health Status Survey) are not mutually exclusive or exhaustive.
- Over half (58.6%) of uninsured Utahns reported they could not afford health insurance as a reason for being uninsured.
- 32.8% of uninsured Utahns reported that an employer did not offer health insurance as a reason for lacking health insurance.



Table 3c. Reasons for Lack of Health Insurance: Percentage of Persons Who Gave Each Reason as a Reason That They Lacked Health Insurance by Poverty Status, Utahns Who Lacked Health Insurance Coverage, 2005

Demographic Subgroup	Survey Estimates of Utahns Without Health Insurance by Reason Uninsured			
	Percentage of Persons by Reason Uninsured ^{1,2}			Number of Persons Reporting Each Reason ³
	95% Confidence Bounds			
	Lower	Upper		
Reasons for Lack of Health Insurance				
Cannot Afford Insurance	58.6%	50.9%	66.0%	171,600
Employer Does Not Offer Insurance	32.8%	26.2%	40.2%	96,200
Lost Job	27.3%	21.5%	33.9%	79,900
Don't Need/Don't Want Insurance	27.3%	20.6%	35.1%	79,800
Employed Part Time	15.9%	12.0%	20.8%	46,600
Lost Eligibility	10.8%	7.5%	15.4%	31,700
Insurance Company Refused to Cover ⁴	6.8%	4.8%	9.7%	20,000

Demographic Subgroup	Utah Population Distribution		Survey Estimates of Utahns Without Health Insurance by Reason Uninsured				
	Percentage Distribution	Number of Uninsured Persons ⁵	Percentage of Uninsured Persons ¹			Number of Uninsured Persons ^{3,6}	Percentage Distribution of Uninsured Persons by Subgroup ⁶
			95% Confidence Bounds				
			Lower	Upper			
Cannot Afford Insurance by Poverty Status							
<100% Federal Poverty Level	33.3%	97,600	58.2%	40.8%	73.7%	56,800	33.6%
101-200% Federal Poverty Level	33.5%	98,100	50.2%	37.8%	62.6%	49,300	29.2%
201-300% Federal Poverty Level	25.5%	74,800	69.1%	53.7%	81.2%	51,700	30.6%
>300% Federal Poverty Level	7.6%	22,300	49.3%	32.3%	66.4%	11,000	6.5%
Total, All Uninsured Utahns	100.0%	292,800	58.6%	50.9%	66.0%	171,600	100.0%
Employer Does Not Offer Insurance by Poverty Status							
<100% Federal Poverty Level	33.3%	97,600	32.3%	18.7%	49.7%	31,500	31.5%
101-200% Federal Poverty Level	33.5%	98,100	38.4%	26.7%	51.6%	37,600	37.6%
201-300% Federal Poverty Level	25.5%	74,800	30.2%	19.4%	43.7%	22,600	22.6%
>300% Federal Poverty Level	7.6%	22,300	37.0%	22.2%	54.6%	8,200	8.2%
Total, All Uninsured Utahns	100.0%	292,800	32.8%	26.2%	40.2%	96,200	100.0%
Lost Job by Poverty Status							
<100% Federal Poverty Level	33.3%	97,600	25.3%	14.5%	40.3%	24,700	28.6%
101-200% Federal Poverty Level	33.5%	98,100	29.6%	19.9%	41.7%	29,100	33.7%
201-300% Federal Poverty Level	25.5%	74,800	31.4%	19.9%	45.6%	23,500	27.2%
>300% Federal Poverty Level	7.6%	22,300	40.6%	25.4%	57.9%	9,100	10.5%
Total, All Uninsured Utahns	100.0%	292,800	27.3%	21.5%	33.9%	79,900	100.0%
Don't Need/Don't Want Insurance by Poverty Status							
<100% Federal Poverty Level	33.3%	97,600	33.1%	18.7%	51.5%	32,300	43.8%
101-200% Federal Poverty Level	33.5%	98,100	16.7%	9.5%	27.7%	16,400	22.2%
201-300% Federal Poverty Level	25.5%	74,800	24.0%	14.4%	37.2%	18,000	24.4%
>300% Federal Poverty Level	7.6%	22,300	31.6%	17.5%	50.1%	7,100	9.6%
Total, All Uninsured Utahns	100.0%	292,800	27.3%	20.6%	35.1%	79,800	100.0%
Employed Part Time by Poverty Status							
<100% Federal Poverty Level	33.3%	97,600	16.1%	9.2%	26.6%	15,700	36.2%
101-200% Federal Poverty Level	33.5%	98,100	14.2%	7.9%	24.1%	13,900	32.0%
201-300% Federal Poverty Level	25.5%	74,800	13.5%	7.7%	22.5%	10,100	23.3%
>300% Federal Poverty Level	7.6%	22,300	16.8%	7.9%	32.1%	3,700	8.5%
Total, All Uninsured Utahns	100.0%	292,800	15.9%	12.0%	20.8%	46,600	100.0%

See footnotes at end of table.



Table 3c (continued). Reasons for Lack of Health Insurance: Percentage of Persons Who Gave Each Reason as a Reason That They Lacked Health Insurance by Poverty Status, Utahns Who Lacked Health Insurance Coverage, 2005

Demographic Subgroup	Utah Population Distribution		Survey Estimates of Utahns Without Health Insurance by Reason Uninsured				
	Percentage Distribution	Number of Uninsured Persons ⁵	Percentage of Uninsured Persons ¹			Number of Uninsured Persons ^{3,6}	Percentage Distribution of Uninsured Persons by Subgroup ⁶
			95% Confidence Bounds				
			Lower	Upper			
Lost Eligibility by Poverty Status							
<100% Federal Poverty Level	33.3%	97,600	16.2%	8.9%	27.7%	15,800	47.3%
101-200% Federal Poverty Level	33.5%	98,100	13.8%	7.9%	22.9%	13,500	40.4%
201-300% Federal Poverty Level	25.5%	74,800	4.7%	1.1%	17.5%	3,500	10.5%
>300% Federal Poverty Level	7.6%	22,300	***	***	***	***	***
Total, All Uninsured Utahns	100.0%	292,800	10.8%	7.5%	15.4%	31,700	100.0%
Insurance Company Refused to Cover⁴ by Poverty Status							
<100% Federal Poverty Level	33.3%	97,600	1.6%	0.5%	4.6%	1,600	8.1%
101-200% Federal Poverty Level	33.5%	98,100	10.5%	5.7%	18.5%	10,300	52.0%
201-300% Federal Poverty Level	25.5%	74,800	8.2%	4.1%	15.7%	6,200	31.3%
>300% Federal Poverty Level	7.6%	22,300	7.7%	3.0%	18.6%	1,700	8.6%
Total, All Uninsured Utahns	100.0%	292,800	6.8%	4.8%	9.7%	20,000	100.0%

1 Asymmetric confidence bounds were calculated using the logit transformation.

2 Because individuals could have cited more than one reason, figures in this column do not sum to 100%.

3 Rounded to the nearest 100 persons

4 Reasons an insurance company would refuse to cover an individual included 1) a pre-existing condition, 2) the individual exceeded lifetime benefits, or 3) some other reason.

5 Population estimates based on the 2005 UHSS and rounded to the nearest 100 persons.

6 Figures in these columns may not sum to the total because of data weighting and missing values on the grouping variables.

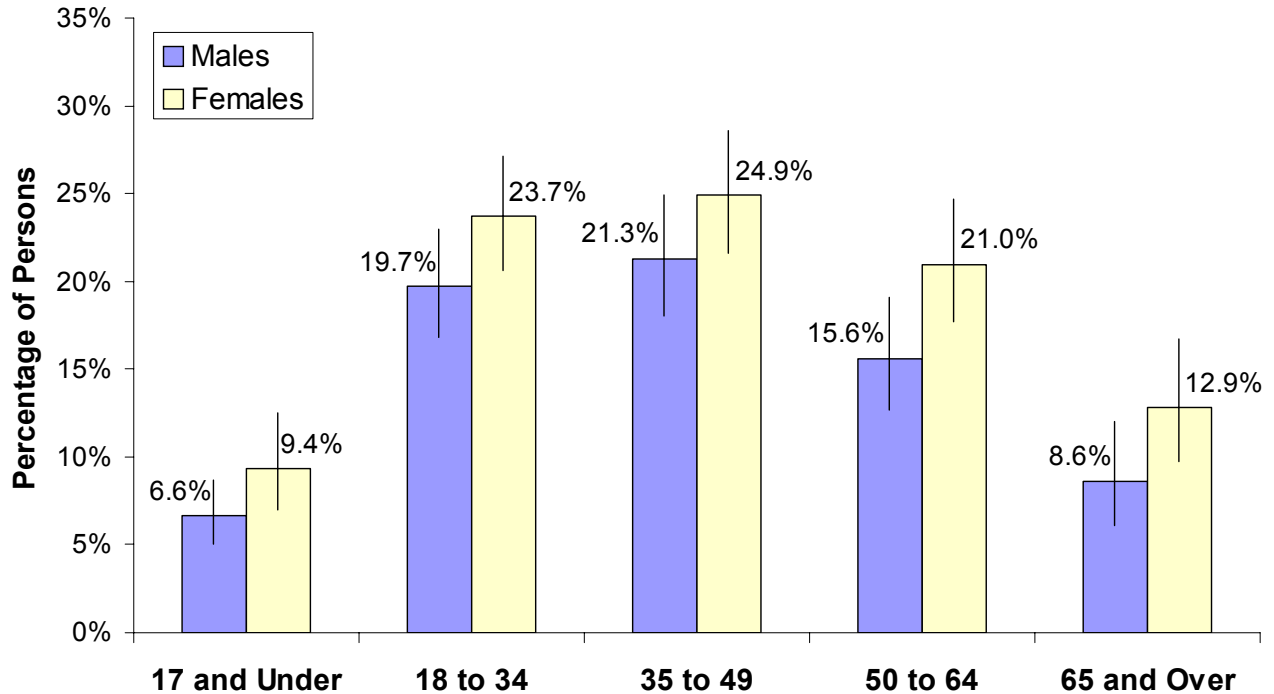
*** Insufficient sample size for calculation of population estimates.

Note: Estimates are not mutually exclusive, both by definition, and because a person may have reported more than one reason why uninsured.

- The proportion of uninsured Utahns who reported that they did not need/did not want insurance as a reason for lacking health insurance increased by 26.5% between 2001 and 2005.



Figure 4.1 Percentage of Persons Who Were Unable to Get Needed Medical, Dental, or Mental Health Care* in the Previous 12 Months by Age and Sex, Utah, 2005



*An individual was defined as unable to get care if they indicated that they delayed or were unable to obtain care because (1) their insurance would not cover the service, (2) the service was not available in their area, or (3) they could not afford to pay for the service.

- Both the number and percent of Utahns who were unable to get needed medical, dental, or mental health care in the past 12 months decreased slightly from 2004 to 2005 (2004: 16.9% and 2005: 16.3%).
- Females aged 35 to 49 were the most likely age and gender group to report difficulties getting needed care (24.9%).



Table 4. Access to Health Care: Percentage of Persons Who Were Unable to Get Needed Medical, Dental, or Mental Health Care* in the Previous 12 Months by Selected Demographic Characteristics, Utah Residents, 2005

Demographic Subgroup	Utah Population Distribution		Survey Estimates of Utahns With an Access Problem				
	Percentage Distribution	Number of Persons ¹	Percentage of Persons ²			Number of Persons ^{3,4}	Percentage Distribution of Persons Unable to Get Care
			95% Confidence Bounds				
			Lower	Upper			
2005 Utah Population	100.0%	2,528,926	16.3%	15.1%	17.6%	411,600	100.0%
Sex							
Male	50.2%	1,275,758	14.4%	13.0%	15.8%	183,400	44.6%
Female	49.8%	1,253,168	18.2%	16.6%	19.9%	227,900	55.4%
Total, All Utahns	100.0%	2,528,926	16.3%	15.1%	17.6%	411,600	100.0%
Age Group							
17 and Under	31.5%	788,452	8.0%	6.4%	9.9%	62,900	15.2%
18 to 34	29.1%	737,965	21.7%	19.3%	24.3%	160,200	38.8%
35 to 49	18.8%	465,964	23.1%	20.3%	26.0%	107,500	26.0%
50 to 64	12.1%	323,963	18.4%	15.9%	21.1%	59,500	14.4%
65 and Over	8.4%	212,582	10.9%	8.6%	13.7%	23,200	5.6%
Total, All Utahns	100.0%	2,528,926	16.3%	15.1%	17.6%	411,600	100.0%
Sex and Age							
Males, 17 and Under	16.2%	404,656	6.6%	5.0%	8.7%	26,900	6.5%
Males, 18 to 34	14.7%	376,364	19.7%	16.8%	23.0%	74,200	18.0%
Males, 35 to 49	9.5%	237,941	21.3%	18.0%	24.9%	50,600	12.3%
Males 50 to 64	6.0%	161,253	15.6%	12.7%	19.1%	25,200	6.1%
Males, 65 and Over	3.7%	95,544	8.6%	6.1%	12.0%	8,200	2.0%
Females, 17 and Under	15.3%	383,796	9.4%	7.0%	12.5%	36,000	8.7%
Females, 18 to 34	14.4%	361,601	23.7%	20.6%	27.1%	85,800	20.8%
Females, 35 to 49	9.3%	228,023	24.9%	21.6%	28.6%	56,800	13.8%
Females 50 to 64	6.1%	162,710	21.0%	17.7%	24.7%	34,200	8.3%
Females, 65 and Over	4.7%	117,038	12.9%	9.8%	16.7%	15,000	3.6%
Total, All Utahns	100.0%	2,528,926	16.3%	15.1%	17.6%	411,600	100.0%
Local Health District⁵							
Bear River	6.1%	149,705	16.0%	12.1%	20.8%	24,000	5.8%
Central	2.9%	71,046	20.1%	15.5%	25.7%	14,300	3.5%
Davis	10.7%	276,374	12.6%	9.4%	16.7%	34,900	8.5%
Salt Lake	39.6%	970,748	15.7%	13.6%	18.1%	152,500	37.0%
Southeastern	2.3%	52,832	29.0%	24.1%	34.4%	15,300	3.7%
Southwest	6.5%	182,295	18.3%	14.4%	23.0%	33,300	8.1%
Summit	1.4%	36,417	11.4%	8.0%	16.1%	4,200	1.0%
Tooele	2.0%	51,835	20.8%	16.7%	25.6%	10,800	2.6%
TriCounty	1.8%	42,327	17.4%	13.4%	22.2%	7,400	1.8%
Utah County	17.0%	453,977	18.1%	15.1%	21.5%	82,200	20.0%
Wasatch	0.7%	20,138	13.2%	9.9%	17.4%	2,700	0.7%
Weber-Morgan	8.9%	221,232	13.7%	10.3%	18.2%	30,400	7.4%
Total, All Utahns	100.0%	2,528,926	16.3%	15.1%	17.6%	411,600	100.0%
Health Insurance Coverage							
Insured	88.4%	2,236,100	13.9%	12.7%	15.2%	310,000	73.1%
Uninsured	11.6%	292,800	38.9%	33.3%	44.8%	114,000	26.9%
Total, All Utahns	100.0%	2,528,900	16.3%	15.1%	17.6%	411,600	100.0%
Annual Household Income							
Under \$20,000	10.1%	256,400	27.7%	22.9%	33.0%	71,000	16.8%
\$20,000 to <\$45,000	27.5%	695,800	23.7%	21.1%	26.5%	164,800	39.0%
\$45,000 to <\$65,000	23.8%	600,800	17.1%	14.5%	20.0%	102,500	24.3%
\$65,000 and Over	38.6%	975,900	8.6%	6.9%	10.8%	84,200	19.9%
Total, All Utahns	100.0%	2,528,900	16.3%	15.1%	17.6%	411,600	100.0%

See footnotes at end of table.



Table 4 (continued). Access to Health Care: Percentage of Persons Who Were Unable to Get Needed Medical, Dental, or Mental Health Care* in the Previous 12 Months by Selected Demographic Characteristics, Utah Residents, 2005

Demographic Subgroup	Utah Population Distribution		Survey Estimates of Utahns With an Access Problem				
	Percentage Distribution	Number of Persons ¹	Percentage of Persons ²			Number of Persons ^{3,4}	Percentage Distribution of Persons Unable to Get Care
			95% Confidence Bounds				
			Lower	Upper			
Poverty Status							
<100% Federal Poverty Level	10.6%	268,500	26.5%	21.5%	32.2%	71,100	16.9%
101-200% Federal Poverty Level	22.1%	559,400	23.1%	20.2%	26.2%	128,900	30.6%
201-300% Federal Poverty Level	38.3%	967,500	14.9%	12.7%	17.3%	143,800	34.1%
>300% Federal Poverty Level	29.0%	733,600	10.6%	9.0%	12.6%	78,100	18.5%
Total, All Utahns	100.0%	2,528,900	16.3%	15.1%	17.6%	411,600	100.0%
Education Level							
Some High School	6.7%	117,300	26.3%	20.7%	32.8%	30,800	8.8%
High School Grad/Some College	53.9%	938,900	20.8%	18.8%	22.8%	194,800	55.5%
Technical/Vocational Degree	10.0%	174,000	22.0%	18.1%	26.5%	38,300	10.9%
4 Year College Degree or More	29.3%	510,300	17.1%	14.9%	19.5%	87,200	24.8%
Total, All Utahns Aged 18+	100.0%	1,740,500	20.1%	18.7%	21.6%	349,700	100.0%
Employment Status							
Full Time	50.5%	879,600	19.0%	17.2%	21.0%	167,300	47.6%
Part Time	16.8%	291,600	23.5%	20.4%	26.8%	68,400	19.5%
Retired	11.0%	192,000	10.8%	8.4%	13.9%	20,800	5.9%
Keeping House	11.5%	199,700	21.0%	17.4%	25.1%	42,000	12.0%
Full Time Student	3.1%	53,300	15.0%	9.7%	22.4%	8,000	2.3%
Unemployed/Other	7.1%	124,300	36.1%	30.4%	42.2%	44,900	12.8%
Total, All Utahns Aged 18+	100.0%	1,740,500	20.1%	18.7%	21.6%	349,700	100.0%
Hispanic or Latino Ethnicity							
Hispanic or Latino	10.8%	274,100	16.6%	11.9%	22.6%	45,500	11.1%
Not Hispanic or Latino	89.2%	2,254,800	16.2%	15.0%	17.4%	364,300	88.9%
Total, All Utahns	100.0%	2,528,900	16.3%	15.1%	17.6%	411,600	100.0%
Marital Status							
Married	69.5%	1,209,400	19.4%	17.7%	21.2%	234,700	67.2%
Never Married	19.2%	334,300	16.0%	13.1%	19.5%	53,500	15.3%
Divorced/Separated/Widowed	11.3%	196,700	30.9%	27.0%	35.2%	60,900	17.4%
Total, All Utahns Aged 18+	100.0%	1,740,500	20.1%	18.7%	21.6%	349,700	100.0%

1 Population estimates of sex, age groups, and local health district based on 2005 baseline projections, Governor's Office of Planning and Budget, REMI model system; all others based on the 2005 UHSS and rounded to the nearest 100 persons.

2 Asymmetric confidence bounds were calculated using the logit transformation.

3 Rounded to the nearest 100 persons.

4 Figures in these columns may not sum to the total because of data weighting and missing values on the grouping variables.

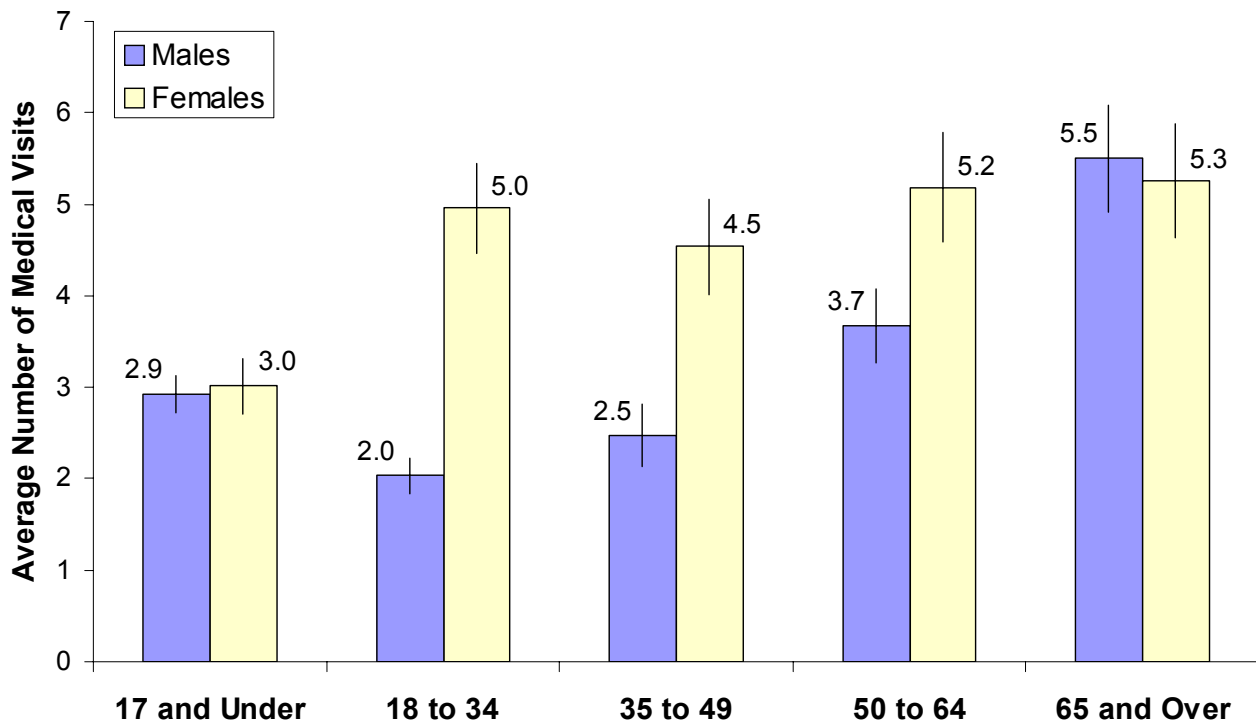
5 These rates have not been age-adjusted. Age-adjusted rates are available upon request.

*An individual was defined as unable to get care if they indicated that they delayed or were unable to obtain care because (1) their insurance would not cover the service, (2) the service was not available in their area, or (3) they could not afford to pay for the service.

- Although Utahns with some kind of health insurance were much less likely than uninsured Utahns to report difficulties getting care (13.9% and 38.9% respectively), Utahns with insurance made up 73.1% of all those who reported access problems.
- As household income increased the likelihood of reporting difficulties getting needed care decreased.
- Southeastern Health District had the highest proportion of residents reporting difficulties getting needed care (29.0%).



Figure 5.1 Average Number of Medical Visits in the Previous 12 Months by Age and Sex, Utah, 2005



Note: Does not include overnight hospital stays.

- The average number of medical visits in the previous 12 months was positively associated with age. As age increased, the average number of medical visits also increased.
- Males and females aged 65 and over had the highest average number of medical visits compared to other age and gender groups.



Table 5. Health Care Utilization: Average Number of Medical Visits in the Previous 12 Months by Selected Demographic Characteristics, Utah Residents, 2005

Demographic Subgroup	Utah Population Distribution		Survey Estimates of Number of Medical Visits in Previous 12 Months				
	Percentage Distribution	Number of Persons ¹	Avg. Number of Visits ²	95% Confidence Bounds		Total Number of Medical Visits ^{3,4}	Percentage Distribution of Medical Visits by Subgroup ⁴
			Lower	Upper			
2005 Utah Population	100.0%	2,528,926	3.6	3.5	3.7	9,086,000	100.0%
Sex							
Male	50.2%	1,275,758	2.9	2.7	3.0	3,658,600	40.3%
Female	49.8%	1,253,168	4.3	4.1	4.5	5,421,200	59.7%
Total, All Utahns	100.0%	2,528,926	3.6	3.5	3.7	9,086,000	100.0%
Age Group							
17 and Under	31.5%	788,452	3.0	2.8	3.1	2,338,700	25.7%
18 to 34	29.1%	737,965	3.5	3.2	3.7	2,560,100	28.1%
35 to 49	18.8%	465,964	3.5	3.2	3.8	1,622,700	17.8%
50 to 64	12.1%	323,963	4.4	4.1	4.8	1,441,000	15.8%
65 and Over	8.4%	212,582	5.4	4.9	5.8	1,141,100	12.5%
Total, All Utahns	100.0%	2,528,926	3.6	3.5	3.7	9,086,000	100.0%
Sex and Age							
Males, 17 and Under	16.2%	404,656	2.9	2.7	3.1	1,182,800	13.0%
Males, 18 to 34	14.7%	376,364	2.0	1.8	2.2	764,900	8.4%
Males, 35 to 49	9.5%	237,941	2.5	2.1	2.8	589,500	6.5%
Males 50 to 64	6.0%	161,253	3.7	3.3	4.1	591,600	6.5%
Males, 65 and Over	3.7%	95,544	5.5	4.9	6.1	525,400	5.8%
Females, 17 and Under	15.3%	383,796	3.0	2.7	3.3	1,155,900	12.7%
Females, 18 to 34	14.4%	361,601	5.0	4.5	5.5	1,793,800	19.7%
Females, 35 to 49	9.3%	228,023	4.5	4.0	5.1	1,034,900	11.4%
Females 50 to 64	6.1%	162,710	5.2	4.6	5.8	843,400	9.3%
Females, 65 and Over	4.7%	117,038	5.3	4.6	5.9	615,300	6.8%
Total, All Utahns	100.0%	2,528,926	3.6	3.5	3.7	9,086,000	100.0%
Local Health District ⁵							
Bear River	6.1%	149,705	3.1	2.8	3.4	468,100	5.2%
Central	2.9%	71,046	3.8	3.4	4.2	270,100	3.0%
Davis	10.7%	276,374	4.0	3.6	4.4	1,108,300	12.2%
Salt Lake	39.6%	970,748	3.5	3.3	3.7	3,386,600	37.3%
Southeastern	2.3%	52,832	4.1	3.7	4.6	217,900	2.4%
Southwest	6.5%	182,295	3.5	3.1	3.9	637,300	7.0%
Summit	1.4%	36,417	3.5	3.1	3.9	127,700	1.4%
Tooele	2.0%	51,835	4.1	3.6	4.5	211,700	2.3%
TriCounty	1.8%	42,327	3.7	3.3	4.2	158,100	1.7%
Utah County	17.0%	453,977	3.3	3.1	3.6	1,518,400	16.7%
Wasatch	0.7%	20,138	3.9	3.5	4.3	78,400	0.9%
Weber-Morgan	8.9%	221,232	4.1	3.5	4.7	903,200	9.9%
Total, All Utahns	100.0%	2,528,926	3.6	3.5	3.7	9,086,000	100.0%
Health Insurance Coverage							
Insured	88.4%	2,236,100	3.8	3.7	4.0	8,573,500	93.7%
Uninsured	11.6%	292,800	2.0	1.7	2.3	578,500	6.3%
Total, All Utahns	100.0%	2,528,900	3.6	3.5	3.7	9,086,000	100.0%
Annual Household Income							
Under \$20,000	10.1%	256,400	4.0	3.4	4.6	1,024,400	11.3%
\$20,000 to <\$45,000	27.5%	695,800	3.9	3.6	4.1	2,685,700	29.7%
\$45,000 to <\$65,000	23.8%	600,800	3.7	3.4	3.9	2,199,300	24.3%
\$65,000 and Over	38.6%	975,900	3.2	3.0	3.4	3,131,800	34.6%
Total, All Utahns	100.0%	2,528,900	3.6	3.5	3.7	9,086,000	100.0%

See footnotes at end of table.



Table 5 (cont.). Health Care Utilization: Average Number of Medical Visits in the Previous 12 Months by Selected Demographic Characteristics, Utah Residents, 2005

Demographic Subgroup	Utah Population Distribution		Survey Estimates of Number of Medical Visits in Previous 12 Months				
	Percentage Distribution	Number of Persons ¹	Avg. Number of Visits ²	95% Confidence Bounds		Total Number of Medical Visits ^{3,4}	Percentage Distribution of Medical Visits by Subgroup ⁴
			Lower	Upper			
Poverty Status							
<100% Federal Poverty Level	10.6%	268,500	3.5	2.9	4.0	927,700	10.2%
101-200% Federal Poverty Level	22.1%	559,400	3.6	3.3	3.9	2,014,900	22.2%
201-300% Federal Poverty Level	38.3%	967,500	3.3	3.1	3.5	3,226,400	35.6%
>300% Federal Poverty Level	29.0%	733,600	3.9	3.7	4.2	2,889,500	31.9%
Total, All Utahns	100.0%	2,528,900	3.6	3.5	3.7	9,086,000	100.0%
Education Level							
Some High School	6.7%	117,300	4.0	3.0	5.1	474,900	7.0%
High School Grad/Some College	53.9%	938,900	3.8	3.6	4.0	3,578,100	52.6%
Technical/Vocational Degree	10.0%	174,000	3.9	3.4	4.5	685,800	10.1%
4 Year College Degree or More	29.3%	510,300	4.0	3.7	4.3	2,058,500	30.3%
Total, All Utahns Aged 18+	100.0%	1,740,500	3.9	3.7	4.1	6,777,900	100.0%
Employment Status							
Full Time	50.5%	879,600	3.0	2.8	3.2	2,654,000	38.9%
Part Time	16.8%	291,600	3.2	2.9	3.5	936,200	13.7%
Retired	11.0%	192,000	5.5	5.0	6.0	1,051,200	15.4%
Keeping House	11.5%	199,700	5.5	4.9	6.1	1,107,800	16.2%
Full Time Student	3.1%	53,300	3.3	2.4	4.1	173,400	2.5%
Unemployed/Other	7.1%	124,300	7.3	6.0	8.5	903,300	13.2%
Total, All Utahns Aged 18+	100.0%	1,740,500	3.9	3.7	4.1	6,777,900	100.0%
Hispanic or Latino Ethnicity							
Hispanic or Latino	10.8%	274,100	3.1	2.4	3.7	838,300	9.3%
Not Hispanic or Latino	89.2%	2,254,800	3.6	3.5	3.8	8,223,500	90.7%
Total, All Utahns	100.0%	2,528,900	3.6	3.5	3.7	9,086,000	100.0%
Marital Status							
Married	69.5%	1,209,400	4.0	3.8	4.2	4,800,300	70.9%
Never Married	19.2%	334,300	2.8	2.3	3.2	922,900	13.6%
Divorced/Separated/Widowed	11.3%	196,700	5.3	4.6	6.0	1,046,400	15.5%
Total, All Utahns Aged 18+	100.0%	1,740,500	3.9	3.7	4.1	6,777,900	100.0%

1 Population estimates of sex, age groups, and local health district based on 2005 baseline projections, Governor's Office of Planning and Budget, REMI model system; all others based on the 2005 UHSS and rounded to the nearest 100 persons.

2 Symmetric confidence bounds.

3 Rounded to the nearest 100 persons.

4 Figures in these columns may not sum to the total because of data weighting and missing values on the grouping variables.

5 These rates have not been age-adjusted. Age-adjusted rates are available upon request.

Note: Does not include overnight hospital stays.



Figure 6.1 Percentage of Persons Who Received a Routine Medical Check-up in the Previous 12 Months, Utah, 1996, 2001, 2003, 2004, and 2005

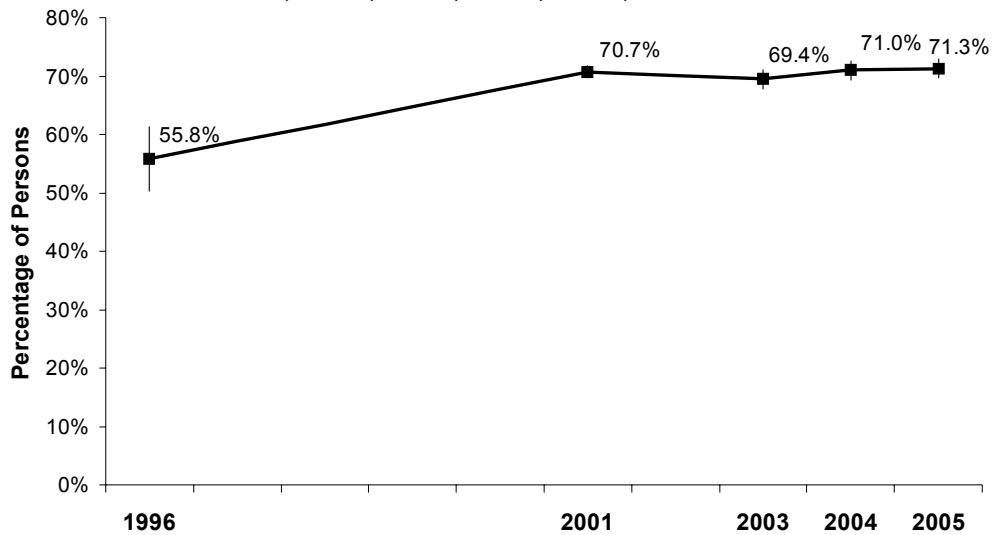
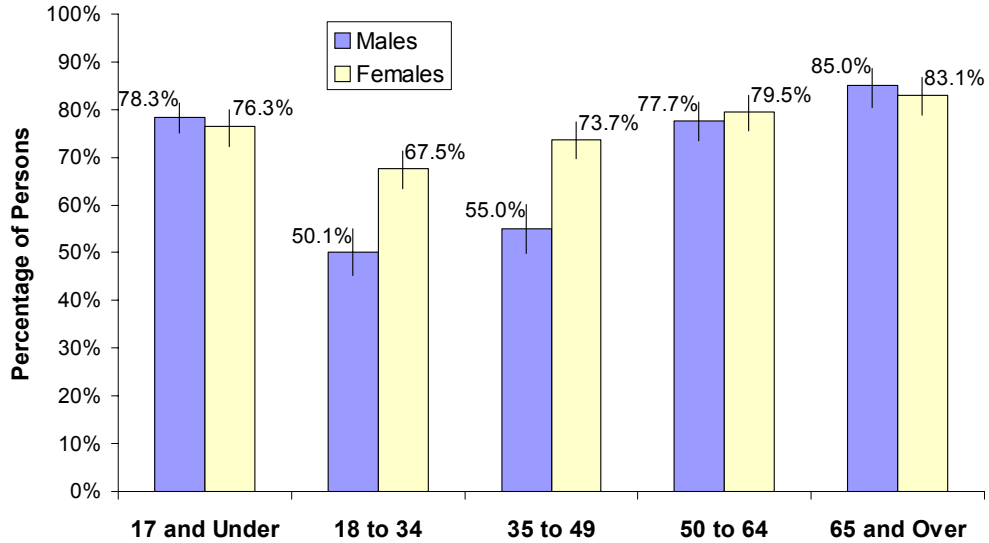


Figure 6.2 Percentage of Persons Who Received a Routine Medical Check-up in the Previous 12 Months by Age and Sex, Utah, 2005



- The proportion of Utahns who had a routine annual check-up varied by age with those aged 18 to 34 being the least likely (59.5%) and those aged 65 and over being the most likely (84.0%).



Table 6. Preventive Medical Visit: Percentage of Persons Who Received a Routine Medical Check-up in the Previous 12 Months by Selected Demographic Characteristics, Utah Residents, 2005

Demographic Subgroup	Utah Population Distribution		Survey Estimates of Utahns With a Routine Exam				
	Percentage Distribution	Number of Persons ¹	Percentage of Persons ²			Number of Persons ^{3,4}	Percentage Distribution of Persons With a Routine Exam by Subgroup ⁴
			95% Confidence Bounds				
			Lower	Upper			
2005 Utah Population	100.0%	2,528,926	71.3%	69.7%	72.9%	1,803,800	100.0%
Sex							
Male	50.2%	1,275,758	67.9%	65.8%	70.0%	866,200	48.1%
Female	49.8%	1,253,168	74.5%	72.5%	76.5%	934,000	51.9%
Total, All Utahns	100.0%	2,528,926	71.3%	69.7%	72.9%	1,803,800	100.0%
Age Group							
17 and Under	31.5%	788,452	77.4%	74.6%	80.0%	610,200	34.2%
18 to 34	29.1%	737,965	59.5%	56.1%	62.7%	438,800	24.6%
35 to 49	18.8%	465,964	65.2%	61.7%	68.5%	303,800	17.0%
50 to 64	12.1%	323,963	78.7%	75.5%	81.5%	254,800	14.3%
65 and Over	8.4%	212,582	84.0%	80.6%	86.9%	178,500	10.0%
Total, All Utahns	100.0%	2,528,926	71.3%	69.7%	72.9%	1,803,800	100.0%
Sex and Age							
Males, 17 and Under	16.2%	404,656	78.3%	75.1%	81.3%	317,000	17.9%
Males, 18 to 34	14.7%	376,364	50.1%	45.2%	54.9%	188,500	10.6%
Males, 35 to 49	9.5%	237,941	55.0%	49.9%	60.0%	130,900	7.4%
Males 50 to 64	6.0%	161,253	77.7%	73.4%	81.5%	125,300	7.1%
Males, 65 and Over	3.7%	95,544	85.0%	80.5%	88.6%	81,200	4.6%
Females, 17 and Under	15.3%	383,796	76.3%	72.4%	79.9%	293,000	16.5%
Females, 18 to 34	14.4%	361,601	67.5%	63.4%	71.4%	244,200	13.8%
Females, 35 to 49	9.3%	228,023	73.7%	69.6%	77.4%	168,000	9.5%
Females 50 to 64	6.1%	162,710	79.5%	75.6%	82.9%	129,400	7.3%
Females, 65 and Over	4.7%	117,038	83.1%	78.8%	86.6%	97,200	5.5%
Total, All Utahns	100.0%	2,528,926	71.3%	69.7%	72.9%	1,803,800	100.0%
Local Health District⁵							
Bear River	6.1%	149,705	67.9%	62.4%	73.0%	101,700	5.6%
Central	2.9%	71,046	70.0%	63.0%	76.2%	49,800	2.8%
Davis	10.7%	276,374	74.2%	69.4%	78.5%	205,100	11.4%
Salt Lake	39.6%	970,748	73.5%	70.5%	76.3%	713,400	39.6%
Southeastern	2.3%	52,832	67.8%	61.8%	73.3%	35,800	2.0%
Southwest	6.5%	182,295	69.7%	64.4%	74.5%	127,100	7.1%
Summit	1.4%	36,417	79.6%	73.8%	84.5%	29,000	1.6%
Tooele	2.0%	51,835	72.4%	67.0%	77.2%	37,500	2.1%
TriCounty	1.8%	42,327	67.9%	62.0%	73.3%	28,700	1.6%
Utah County	17.0%	453,977	67.3%	63.1%	71.3%	305,700	17.0%
Wasatch	0.7%	20,138	73.0%	67.5%	77.8%	14,700	0.8%
Weber-Morgan	8.9%	221,232	69.5%	62.5%	75.7%	153,700	8.5%
Total, All Utahns	100.0%	2,528,926	71.3%	69.7%	72.9%	1,803,800	100.0%
Health Insurance Coverage							
Insured	88.4%	2,236,100	72.6%	70.8%	74.2%	1,622,400	90.6%
Uninsured	11.6%	292,800	57.8%	51.2%	64.1%	169,300	9.4%
Total, All Utahns	100.0%	2,528,900	71.3%	69.7%	72.9%	1,803,800	100.0%
Annual Household Income							
Under \$20,000	10.1%	256,400	66.7%	60.3%	72.5%	171,000	9.5%
\$20,000 to <\$45,000	27.5%	695,800	69.3%	66.0%	72.4%	482,000	26.9%
\$45,000 to <\$65,000	23.8%	600,800	70.2%	66.4%	73.7%	421,800	23.5%
\$65,000 and Over	38.6%	975,900	73.7%	71.0%	76.3%	719,600	40.1%
Total, All Utahns	100.0%	2,528,900	71.3%	69.7%	72.9%	1,803,800	100.0%

See footnotes at end of table.



Table 6 (continued). Preventive Medical Visit: Percentage of Persons Who Received a Routine Medical Check-up in the Previous 12 Months by Selected Demographic Characteristics, Utah Residents, 2005

Demographic Subgroup	Utah Population Distribution		Survey Estimates of Utahns With a Routine Exam				
	Percentage Distribution	Number of Persons ¹	Percentage of Persons ²			Number of Persons ^{3,4}	Percentage Distribution of Persons With a Routine Exam by Subgroup ⁴
			95% Confidence Bounds				
			Lower	Upper			
Poverty Status							
<100% Federal Poverty Level	10.6%	268,500	67.0%	60.8%	72.6%	179,900	10.0%
101-200% Federal Poverty Level	22.1%	559,400	69.9%	65.7%	73.8%	391,200	21.8%
201-300% Federal Poverty Level	38.3%	967,500	69.4%	66.4%	72.2%	671,400	37.4%
>300% Federal Poverty Level	29.0%	733,600	75.1%	72.3%	77.7%	551,100	30.7%
Total, All Utahns	100.0%	2,528,900	71.3%	69.7%	72.9%	1,803,800	100.0%
Education Level							
Some High School	6.7%	117,300	69.1%	61.2%	76.0%	81,100	6.8%
High School Grad/Some College	53.9%	938,900	68.2%	65.7%	70.7%	640,800	53.8%
Technical/Vocational Degree	10.0%	174,000	68.2%	62.9%	73.1%	118,700	10.0%
4 Year College Degree or More	29.3%	510,300	68.9%	65.7%	71.9%	351,500	29.5%
Total, All Utahns Aged 18+	100.0%	1,740,500	68.5%	66.6%	70.3%	1,191,900	100.0%
Employment Status							
Full Time	50.5%	879,600	66.5%	63.8%	69.1%	584,700	49.2%
Part Time	16.8%	291,600	65.0%	60.5%	69.2%	189,500	16.0%
Retired	11.0%	192,000	82.3%	78.7%	85.5%	158,100	13.3%
Keeping House	11.5%	199,700	70.6%	65.9%	74.9%	140,900	11.9%
Full Time Student	3.1%	53,300	59.1%	47.9%	69.3%	31,500	2.7%
Unemployed/Other	7.1%	124,300	66.5%	59.9%	72.5%	82,700	7.0%
Total, All Utahns Aged 18+	100.0%	1,740,500	68.5%	66.6%	70.3%	1,191,900	100.0%
Hispanic or Latino Ethnicity							
Hispanic or Latino	10.8%	274,100	76.6%	69.4%	82.6%	210,100	11.6%
Not Hispanic or Latino	89.2%	2,254,800	70.8%	69.1%	72.4%	1,596,400	88.4%
Total, All Utahns	100.0%	2,528,900	71.3%	69.7%	72.9%	1,803,800	100.0%
Marital Status							
Married	69.5%	1,209,400	70.8%	68.6%	72.8%	855,800	72.2%
Never Married	19.2%	334,300	56.9%	51.6%	62.1%	190,300	16.1%
Divorced/Separated/Widowed	11.3%	196,700	70.6%	65.7%	75.1%	138,900	11.7%
Total, All Utahns Aged 18+	100.0%	1,740,500	68.5%	66.6%	70.3%	1,191,900	100.0%

1 Population estimates of sex, age groups, and local health district based on 2005 baseline projections, Governor's Office of Planning and Budget, REMI model system; all others based on the 2005 UHSS and rounded to the nearest 100 persons.

2 Asymmetric confidence bounds were calculated using the logit transformation.

3 Rounded to the nearest 100 persons.

4 Figures in these columns may not sum to the total because of data weighting and missing values on the grouping variables.

5 These rates have not been age-adjusted. Age-adjusted rates are available upon request.

- 71.3% of Utahns reported that they had received a routine medical check-up in the previous 12 months.
- Females were significantly more likely to have had a check-up than males (74.5% and 67.9% respectively).
- Only 57.8% of Utahns with no health insurance reported having had a check-up in the past 12 months compared with 72.6% of those with health insurance.



Figure 7.1 Percentage of Persons Who Had No Usual Place of Medical Care, Utah, 2001, 2003, 2004, and 2005

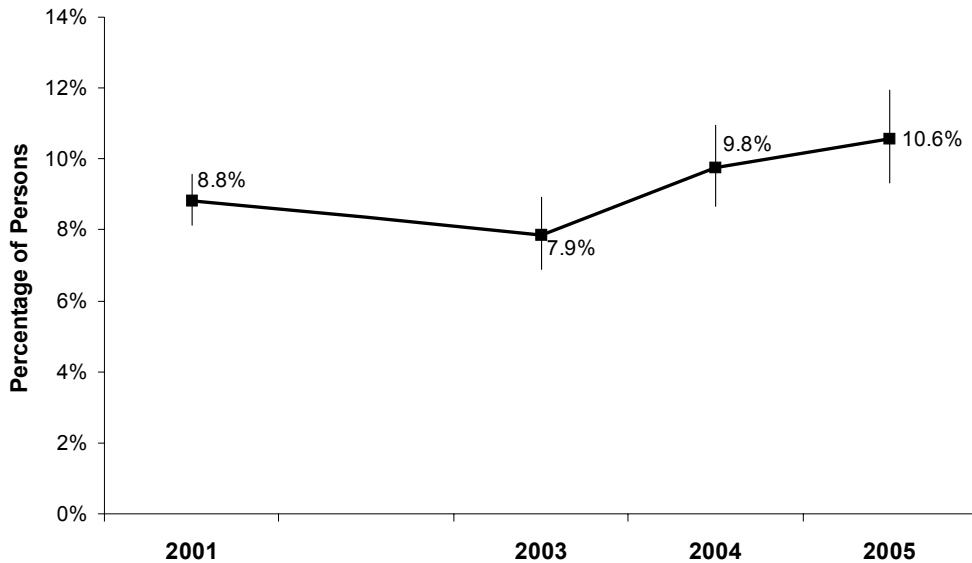
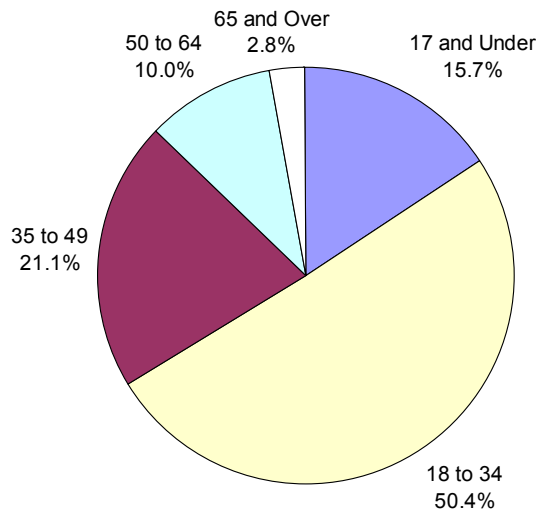


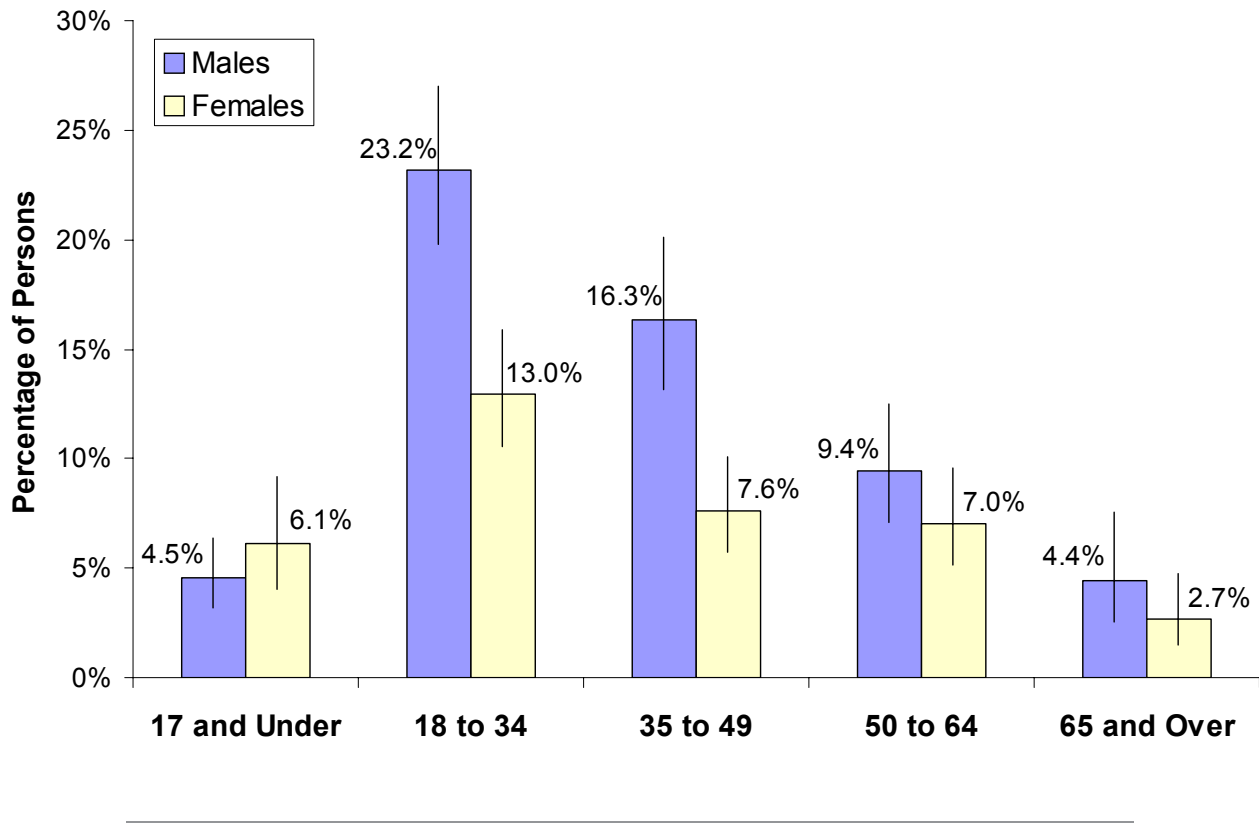
Figure 7.2 Percentage Distribution of Persons Who Had No Usual Place of Medical Care by Age Group, Utah, 2005



- The proportion of Utahns who had no usual place of care is increasing. In 2005, 10.6% of Utahns reported that they had no usual place of care compared to 9.8% in 2004 and 7.9% in 2003.
- Half of all Utahns with no usual place of care were aged 18–34.



Figure 7.3 Percentage of Persons Who Had No Usual Place of Medical Care by Age and Sex, Utah, 2005



- College aged males (18 to 34 years) were the most likely to report having no usual place of care compared to other age and gender groups (23.2%). This group made up one-third (32.8%) of all Utahns with no usual place of care.



Table 7. Place of Care: Percentage of Persons Who Had No Usual Place of Medical Care by Selected Demographic Characteristics, Utah Residents, 2005

Demographic Subgroup	Utah Population Distribution		Survey Estimates of Utahns With No Usual Place of Medical Care				
	Percentage Distribution	Number of Persons ¹	Percentage of Persons ² 95% Confidence Bounds			Number of Persons ^{3,4}	Percentage Distribution of Persons With No Usual Place of Care by Subgroup ⁴
			Lower	Upper			
2005 Utah Population	100.0%	2,528,926	10.6%	9.3%	11.9%	266,900	100.0%
Sex							
Male	50.2%	1,275,758	12.8%	11.3%	14.5%	163,300	61.1%
Female	49.8%	1,253,168	8.3%	7.0%	9.8%	103,800	38.9%
Total, All Utahns	100.0%	2,528,926	10.6%	9.3%	11.9%	266,900	100.0%
Age Group							
17 and Under	31.5%	788,452	5.3%	3.8%	7.3%	41,800	15.7%
18 to 34	29.1%	737,965	18.2%	15.7%	20.9%	134,100	50.4%
35 to 49	18.8%	465,964	12.1%	9.9%	14.7%	56,300	21.1%
50 to 64	12.1%	323,963	8.2%	6.5%	10.4%	26,600	10.0%
65 and Over	8.4%	212,582	3.5%	2.2%	5.4%	7,400	2.8%
Total, All Utahns	100.0%	2,528,926	10.6%	9.3%	11.9%	266,900	100.0%
Sex and Age							
Males, 17 and Under	16.2%	404,656	4.5%	3.2%	6.4%	18,300	6.9%
Males, 18 to 34	14.7%	376,364	23.2%	19.8%	27.0%	87,300	32.8%
Males, 35 to 49	9.5%	237,941	16.3%	13.2%	20.1%	38,900	14.6%
Males 50 to 64	6.0%	161,253	9.4%	7.1%	12.5%	15,200	5.7%
Males, 65 and Over	3.7%	95,544	4.4%	2.6%	7.6%	4,200	1.6%
Females, 17 and Under	15.3%	383,796	6.1%	4.0%	9.1%	23,400	8.8%
Females, 18 to 34	14.4%	361,601	13.0%	10.5%	15.9%	46,900	17.6%
Females, 35 to 49	9.3%	228,023	7.6%	5.7%	10.1%	17,400	6.5%
Females 50 to 64	6.1%	162,710	7.0%	5.2%	9.6%	11,500	4.3%
Females, 65 and Over	4.7%	117,038	2.7%	1.5%	4.7%	3,100	1.2%
Total, All Utahns	100.0%	2,528,926	10.6%	9.3%	11.9%	266,900	100.0%
Local Health District ⁵							
Bear River	6.1%	149,705	9.3%	6.3%	13.6%	13,900	5.2%
Central	2.9%	71,046	5.7%	3.0%	10.6%	4,000	1.5%
Davis	10.7%	276,374	8.2%	5.1%	12.9%	22,600	8.5%
Salt Lake	39.6%	970,748	12.8%	10.5%	15.6%	124,300	46.6%
Southeastern	2.3%	52,832	11.2%	8.0%	15.6%	5,900	2.2%
Southwest	6.5%	182,295	11.8%	8.0%	17.2%	21,500	8.1%
Summit	1.4%	36,417	11.7%	7.7%	17.5%	4,300	1.6%
Tooele	2.0%	51,835	9.8%	6.8%	14.1%	5,100	1.9%
TriCounty	1.8%	42,327	8.2%	5.4%	12.1%	3,500	1.3%
Utah County	17.0%	453,977	8.3%	6.0%	11.3%	37,500	14.1%
Wasatch	0.7%	20,138	10.1%	6.7%	14.9%	2,000	0.8%
Weber-Morgan	8.9%	221,232	9.9%	6.1%	15.7%	22,000	8.3%
Total, All Utahns	100.0%	2,528,926	10.6%	9.3%	11.9%	266,900	100.0%
Health Insurance Coverage							
Insured	88.4%	2,236,100	7.4%	6.4%	8.6%	166,200	64.1%
Uninsured	11.6%	292,800	31.8%	26.4%	37.8%	93,200	35.9%
Total, All Utahns	100.0%	2,528,900	10.6%	9.3%	11.9%	266,900	100.0%
Annual Household Income							
Under \$20,000	10.1%	256,400	21.6%	16.3%	28.0%	55,400	21.7%
\$20,000 to <\$45,000	27.5%	695,800	11.9%	9.5%	14.9%	82,900	32.5%
\$45,000 to <\$65,000	23.8%	600,800	7.2%	5.2%	9.8%	43,000	16.9%
\$65,000 and Over	38.6%	975,900	7.5%	5.9%	9.7%	73,600	28.9%
Total, All Utahns	100.0%	2,528,900	10.6%	9.3%	11.9%	266,900	100.0%

See footnotes at end of table.



Table 7 (continued). Place of Care: Percentage of Persons Who Had No Usual Place of Medical Care by Selected Demographic Characteristics, Utah Residents, 2005

Demographic Subgroup	Utah Population Distribution		Survey Estimates of Utahns With No Usual Place of Medical Care				
	Percentage Distribution	Number of Persons ¹	Percentage of Persons ²			Number of Persons ^{3,4}	Percentage Distribution of Persons With No Usual Place of Care by Subgroup ⁴
			95% Confidence Bounds				
			Lower	Upper			
Poverty Status							
<100% Federal Poverty Level	10.6%	268,500	22.1%	16.1%	29.6%	59,400	23.5%
101-200% Federal Poverty Level	22.1%	559,400	9.6%	7.3%	12.5%	53,700	21.2%
201-300% Federal Poverty Level	38.3%	967,500	8.3%	6.6%	10.4%	80,100	31.6%
>300% Federal Poverty Level	29.0%	733,600	8.2%	6.4%	10.4%	60,000	23.7%
Total, All Utahns	100.0%	2,528,900	10.6%	9.3%	11.9%	266,900	100.0%
Education Level							
Some High School	6.7%	117,300	23.7%	16.9%	32.1%	27,800	12.5%
High School Grad/Some College	53.9%	938,900	12.6%	10.9%	14.6%	118,700	53.6%
Technical/Vocational Degree	10.0%	174,000	12.4%	9.4%	16.0%	21,500	9.7%
4 Year College Degree or More	29.3%	510,300	10.5%	8.7%	12.7%	53,600	24.2%
Total, All Utahns Aged 18+	100.0%	1,740,500	12.9%	11.4%	14.4%	223,700	100.0%
Employment Status							
Full Time	50.5%	879,600	13.9%	12.0%	16.1%	122,700	55.7%
Part Time	16.8%	291,600	13.7%	10.9%	17.0%	39,900	18.1%
Retired	11.0%	192,000	4.7%	3.1%	7.2%	9,100	4.1%
Keeping House	11.5%	199,700	9.5%	6.9%	12.9%	18,900	8.6%
Full Time Student	3.1%	53,300	19.4%	12.1%	29.6%	10,300	4.7%
Unemployed/Other	7.1%	124,300	15.5%	11.3%	20.9%	19,300	8.8%
Total, All Utahns Aged 18+	100.0%	1,740,500	12.9%	11.4%	14.4%	223,700	100.0%
Hispanic or Latino Ethnicity							
Hispanic or Latino	10.8%	274,100	19.8%	14.0%	27.3%	54,300	20.3%
Not Hispanic or Latino	89.2%	2,254,800	9.5%	8.3%	10.7%	213,300	79.7%
Total, All Utahns	100.0%	2,528,900	10.6%	9.3%	11.9%	266,900	100.0%
Marital Status							
Married	69.5%	1,209,400	11.0%	9.6%	12.7%	133,500	59.5%
Never Married	19.2%	334,300	20.4%	16.8%	24.5%	68,200	30.4%
Divorced/Separated/Widowed	11.3%	196,700	11.4%	8.6%	15.0%	22,500	10.0%
Total, All Utahns Aged 18+	100.0%	1,740,500	12.9%	11.4%	14.4%	223,700	100.0%

1 Population estimates of sex, age groups, and local health district based on 2005 baseline projections, Governor's Office of Planning and Budget, REMI model system; all others based on the 2005 UHSS and rounded to the nearest 100 persons.

2 Asymmetric confidence bounds were calculated using the logit transformation.

3 Rounded to the nearest 100 persons.

4 Figures in these columns may not sum to the total because of data weighting and missing values on the grouping variables.

5 These rates have not been age-adjusted. Age-adjusted rates are available upon request.

- Utahns living at or below 100% of the federal poverty level were over twice as likely to report having no usual place of medical care than any other poverty level.
- Uninsured persons (31.8%) were more likely to have no usual source of medical care than those with insurance coverage (7.4%).
- Among adults, those who had not finished high school were more likely to have no usual place of care (23.7%).



Figure 8.1 Percentage of Persons Whose Usual Point of Access to Medical Care Was a Hospital Emergency Department or an Urgent Care Facility, Utah, 2001, 2003, 2004, and 2005

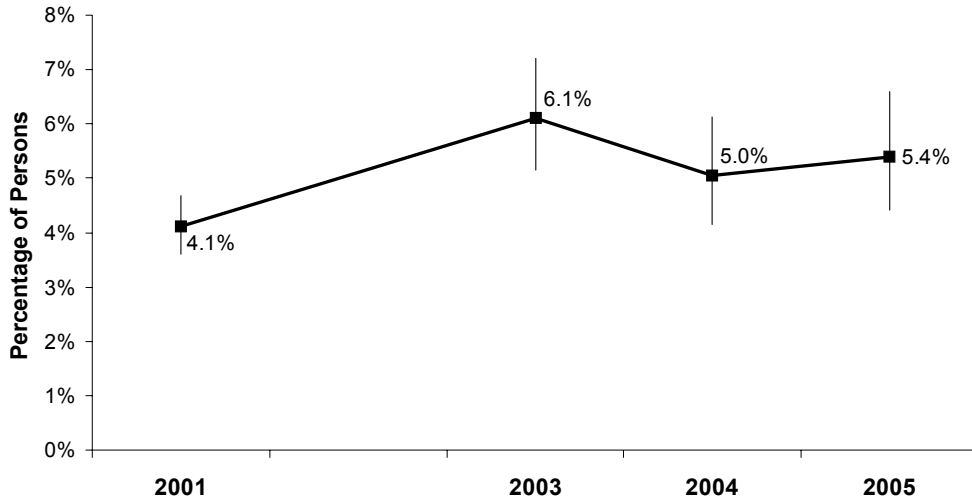
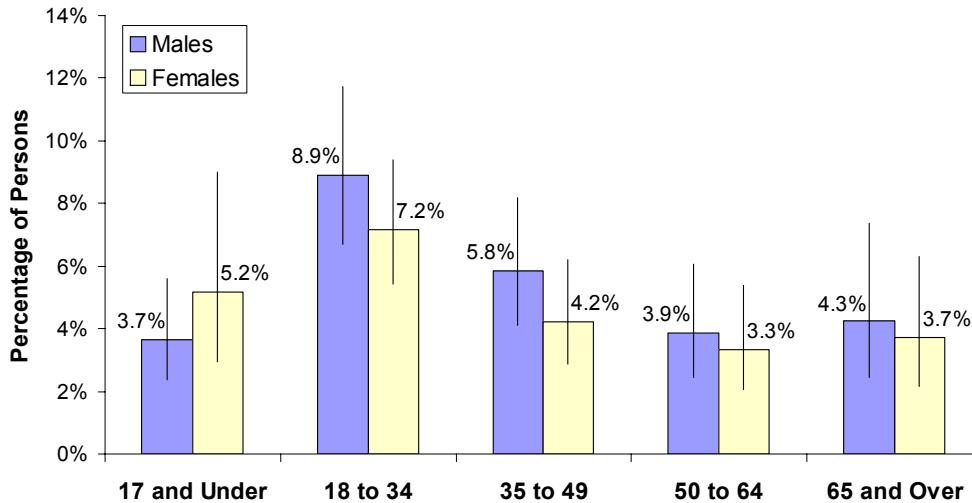


Figure 8.2 Percentage of Persons Whose Usual Point of Access to Medical Care Was a Hospital Emergency Department or an Urgent Care Facility by Age and Sex, Utah, 2005



- The use of an emergency department or urgent care facility as a place of access to medical care is expensive for the individual and the health care system. It also prevents continuity in health care.
- An estimated 136,600 Utahns (5.4%) reported that their usual point of access for medical care was an emergency department or urgent care center.



Table 8. Point of Access to Medical Care: Percentage of Persons Whose Usual Point of Access to Medical Care Was a Hospital Emergency Department or an Urgent Care Center by Selected Demographic Characteristics, Utah Residents, 2005

Demographic Subgroup	Utah Population Distribution		Survey Estimates of Utahns Who Accessed Care in ED or Urgent Care Center				
	Percentage Distribution	Number of Persons ¹	Percentage of Persons ²			Number of Persons ^{3,4}	Percentage Distribution of Persons Who Accessed Care in ED or Urgent Care Center by Subgroup ⁴
			95% Confidence Bounds				
			Lower	Upper			
2005 Utah Population	100.0%	2,528,926	5.4%	4.4%	6.6%	136,600	100.0%
Sex							
Male	50.2%	1,275,758	5.6%	4.6%	6.9%	72,000	52.7%
Female	49.8%	1,253,168	5.2%	4.0%	6.6%	64,600	47.3%
Total, All Utahns	100.0%	2,528,926	5.4%	4.4%	6.6%	136,600	100.0%
Age Group							
17 and Under	31.5%	788,452	4.4%	2.9%	6.7%	34,700	25.2%
18 to 34	29.1%	737,965	8.1%	6.3%	10.2%	59,400	43.1%
35 to 49	18.8%	465,964	5.1%	3.7%	6.9%	23,600	17.1%
50 to 64	12.1%	323,963	3.6%	2.5%	5.2%	11,600	8.4%
65 and Over	8.4%	212,582	4.0%	2.5%	6.3%	8,400	6.1%
Total, All Utahns	100.0%	2,528,926	5.4%	4.4%	6.6%	136,600	100.0%
Sex and Age							
Males, 17 and Under	16.2%	404,656	3.7%	2.4%	5.6%	14,800	10.8%
Males, 18 to 34	14.7%	376,364	8.9%	6.7%	11.7%	33,500	24.3%
Males, 35 to 49	9.5%	237,941	5.8%	4.1%	8.2%	13,900	10.1%
Males 50 to 64	6.0%	161,253	3.9%	2.4%	6.0%	6,200	4.5%
Males, 65 and Over	3.7%	95,544	4.3%	2.4%	7.4%	4,100	3.0%
Females, 17 and Under	15.3%	383,796	5.2%	2.9%	9.0%	19,900	14.5%
Females, 18 to 34	14.4%	361,601	7.2%	5.4%	9.4%	25,900	18.8%
Females, 35 to 49	9.3%	228,023	4.2%	2.9%	6.2%	9,600	7.0%
Females 50 to 64	6.1%	162,710	3.3%	2.0%	5.4%	5,400	3.9%
Females, 65 and Over	4.7%	117,038	3.7%	2.2%	6.3%	4,300	3.1%
Total, All Utahns	100.0%	2,528,926	5.4%	4.4%	6.6%	136,600	100.0%
Local Health District⁵							
Bear River	6.1%	149,705	1.0%	0.4%	3.0%	1,600	1.2%
Central	2.9%	71,046	2.2%	0.7%	7.2%	1,600	1.2%
Davis	10.7%	276,374	6.0%	3.4%	10.3%	16,600	12.1%
Salt Lake	39.6%	970,748	5.7%	4.0%	8.2%	55,700	40.7%
Southeastern	2.3%	52,832	3.9%	1.8%	8.3%	2,100	1.5%
Southwest	6.5%	182,295	5.2%	2.7%	9.9%	9,500	6.9%
Summit	1.4%	36,417	4.9%	2.6%	8.9%	1,800	1.3%
Tooele	2.0%	51,835	5.4%	3.0%	9.3%	2,800	2.0%
TriCounty	1.8%	42,327	6.6%	3.6%	11.8%	2,800	2.0%
Utah County	17.0%	453,977	4.0%	2.4%	6.5%	17,900	13.1%
Wasatch	0.7%	20,138	2.7%	1.4%	5.2%	600	0.4%
Weber-Morgan	8.9%	221,232	10.7%	6.7%	16.7%	23,700	17.3%
Total, All Utahns	100.0%	2,528,926	5.4%	4.4%	6.6%	136,600	100.0%
Health Insurance Coverage							
Insured	88.4%	2,236,100	4.9%	3.9%	6.1%	109,300	79.8%
Uninsured	11.6%	292,800	9.5%	6.2%	14.1%	27,700	20.2%
Total, All Utahns	100.0%	2,528,900	5.4%	4.4%	6.6%	136,600	100.0%
Annual Household Income							
Under \$20,000	10.1%	256,400	5.7%	3.3%	9.4%	14,500	10.4%
\$20,000 to <\$45,000	27.5%	695,800	6.0%	4.0%	8.9%	41,900	30.1%
\$45,000 to <\$65,000	23.8%	600,800	4.2%	2.7%	6.4%	25,200	18.1%
\$65,000 and Over	38.6%	975,900	5.9%	4.1%	8.5%	57,700	41.4%
Total, All Utahns	100.0%	2,528,900	5.4%	4.4%	6.6%	136,600	100.0%

See footnotes at end of table.



Table 8 (continued). Point of Access to Medical Care: Percentage of Persons Whose Usual Point of Access to Medical Care Was a Hospital Emergency Department or an Urgent Care Center by Selected Demographic Characteristics, Utah Residents, 2005

Demographic Subgroup	Utah Population Distribution		Survey Estimates of Utahns Who Accessed Care in ED or Urgent Care Center				
	Percentage Distribution	Number of Persons ¹	Percentage of Persons ²			Number of Persons ^{3,4}	Percentage Distribution of Persons Who Accessed Care in ED or Urgent Care Center by Subgroup ⁴
			95% Confidence Bounds				
			Lower	Upper			
Poverty Status							
<100% Federal Poverty Level	10.6%	268,500	6.0%	3.5%	10.2%	16,100	11.5%
101-200% Federal Poverty Level	22.1%	559,400	5.5%	3.4%	8.8%	31,000	22.2%
201-300% Federal Poverty Level	38.3%	967,500	5.1%	3.3%	7.7%	49,200	35.2%
>300% Federal Poverty Level	29.0%	733,600	5.9%	4.3%	8.1%	43,500	31.1%
Total, All Utahns	100.0%	2,528,900	5.4%	4.4%	6.6%	136,600	100.0%
Education Level							
Some High School	6.7%	117,300	11.1%	6.7%	17.8%	13,000	12.5%
High School Grad/Some College	53.9%	938,900	5.7%	4.5%	7.2%	53,200	51.4%
Technical/Vocational Degree	10.0%	174,000	6.8%	4.4%	10.3%	11,900	11.5%
4 Year College Degree or More	29.3%	510,300	5.0%	3.6%	6.8%	25,500	24.6%
Total, All Utahns Aged 18+	100.0%	1,740,500	5.9%	4.9%	7.1%	103,100	100.0%
Employment Status							
Full Time	50.5%	879,600	6.8%	5.4%	8.4%	59,600	58.2%
Part Time	16.8%	291,600	5.4%	3.7%	7.7%	15,700	15.3%
Retired	11.0%	192,000	4.4%	2.7%	7.0%	8,400	8.2%
Keeping House	11.5%	199,700	4.0%	2.5%	6.4%	8,000	7.8%
Full Time Student	3.1%	53,300	***	***	***	***	***
Unemployed/Other	7.1%	124,300	7.6%	4.5%	12.5%	9,400	9.2%
Total, All Utahns Aged 18+	100.0%	1,740,500	5.9%	4.9%	7.1%	103,100	100.0%
Hispanic or Latino Ethnicity							
Hispanic or Latino	10.8%	274,100	9.1%	4.9%	16.4%	25,000	18.4%
Not Hispanic or Latino	89.2%	2,254,800	4.9%	4.0%	6.0%	110,800	81.6%
Total, All Utahns	100.0%	2,528,900	5.4%	4.4%	6.6%	136,600	100.0%
Marital Status							
Married	69.5%	1,209,400	5.5%	4.4%	6.8%	66,100	63.9%
Never Married	19.2%	334,300	6.6%	4.5%	9.6%	22,000	21.3%
Divorced/Separated/Widowed	11.3%	196,700	7.8%	5.4%	11.1%	15,300	14.8%
Total, All Utahns Aged 18+	100.0%	1,740,500	5.9%	4.9%	7.1%	103,100	100.0%

1 Population estimates of sex, age groups, and local health district based on 2005 baseline projections, Governor's Office of Planning and Budget, REMI model system; all others based on the 2005 UHSS and rounded to the nearest 100 persons.

2 Asymmetric confidence bounds were calculated using the logit transformation.

3 Rounded to the nearest 100 persons.

4 Figures in these columns may not sum to the total because of data weighting and missing values on the grouping variables.

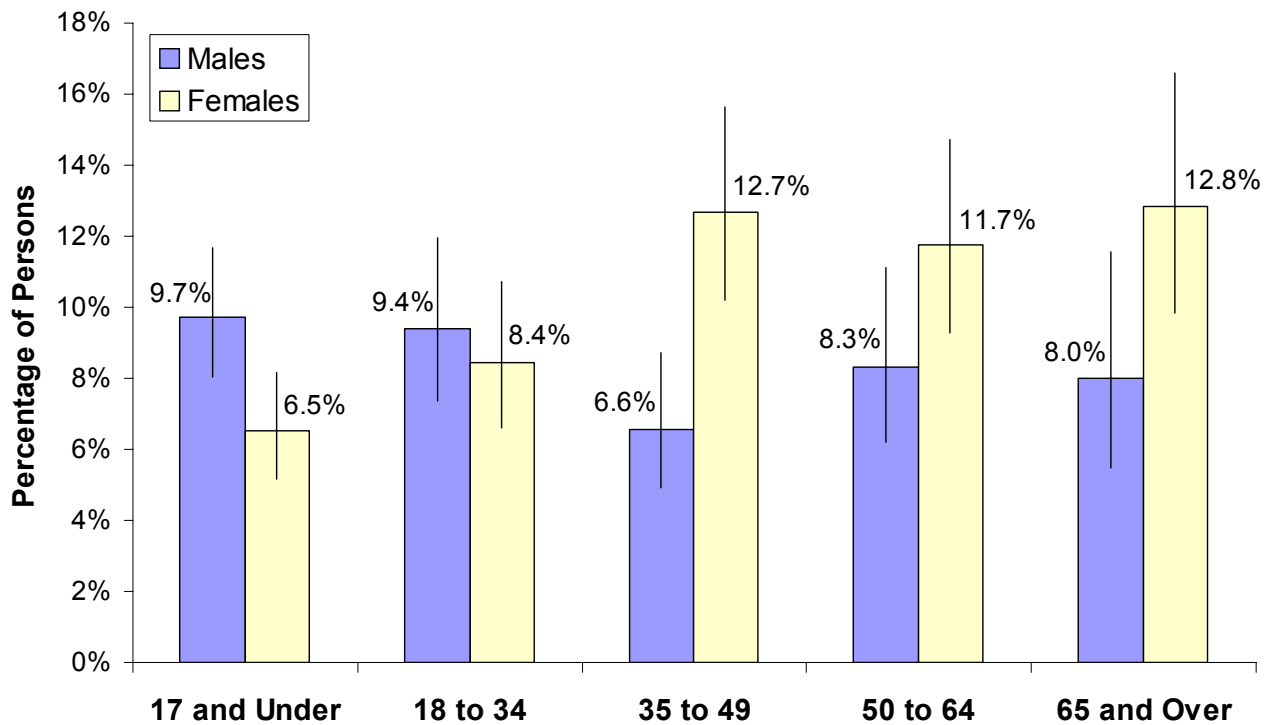
5 These rates have not been age-adjusted. Age-adjusted rates are available upon request.

*** Insufficient sample size for calculation of population estimates.

- Nearly ten percent (9.5%) of uninsured Utahns reported that their usual point of access to care was an emergency department or urgent care center.
- Young adults (18 to 34 years) were the most likely group to report that their usual point of access was an emergency department or urgent care center (8.1%).



Figure 9.1 Percentage of Persons Who Had Ever Been Diagnosed With Asthma by Age and Sex, Utah, 2005



- The proportion of the population who reported being diagnosed with asthma increased with age.
- The highest rates for asthma were reported by women 35 years and over.
- Southwest health district had the highest percentage of Utahns who reported being diagnosed with asthma (12.4%).



Table 9. Asthma: Percentage of Persons Who Had Ever Been Diagnosed With Asthma by Selected Demographic Characteristics, Utah Residents, 2005

Demographic Subgroup	Utah Population Distribution		Survey Estimates of Utahns Who Had Ever Been Diagnosed With Asthma				
	Percentage Distribution	Number of Persons ¹	Percentage of Persons ² 95% Confidence Bounds			Number of Persons ^{3,4}	Percentage Distribution of Persons Ever Diagnosed With Asthma by Subgroup ⁴
			Lower	Upper			
2005 Utah Population	100.0%	2,528,926	9.0%	8.2%	9.9%	228,500	100.0%
Sex							
Male	50.2%	1,275,758	8.7%	7.6%	9.8%	110,700	48.4%
Female	49.8%	1,253,168	9.4%	8.4%	10.5%	117,800	51.6%
Total, All Utahns	100.0%	2,528,926	9.0%	8.2%	9.9%	228,500	100.0%
Age Group							
17 and Under	31.5%	788,452	8.2%	7.0%	9.5%	64,300	28.0%
18 to 34	29.1%	737,965	8.9%	7.5%	10.7%	65,900	28.7%
35 to 49	18.8%	465,964	9.5%	8.0%	11.3%	44,400	19.3%
50 to 64	12.1%	323,963	10.1%	8.3%	12.2%	32,700	14.2%
65 and Over	8.4%	212,582	10.6%	8.5%	13.2%	22,600	9.8%
Total, All Utahns	100.0%	2,528,926	9.0%	8.2%	9.9%	228,500	100.0%
Sex and Age							
Males, 17 and Under	16.2%	404,656	9.7%	8.1%	11.7%	39,300	17.1%
Males, 18 to 34	14.7%	376,364	9.4%	7.3%	12.0%	35,400	15.4%
Males, 35 to 49	9.5%	237,941	6.6%	4.9%	8.7%	15,600	6.8%
Males 50 to 64	6.0%	161,253	8.3%	6.2%	11.1%	13,400	5.8%
Males, 65 and Over	3.7%	95,544	8.0%	5.5%	11.5%	7,700	3.3%
Females, 17 and Under	15.3%	383,796	6.5%	5.2%	8.2%	25,000	10.9%
Females, 18 to 34	14.4%	361,601	8.4%	6.6%	10.7%	30,500	13.3%
Females, 35 to 49	9.3%	228,023	12.7%	10.2%	15.6%	28,900	12.6%
Females 50 to 64	6.1%	162,710	11.7%	9.3%	14.7%	19,100	8.3%
Females, 65 and Over	4.7%	117,038	12.8%	9.8%	16.6%	15,000	6.5%
Total, All Utahns	100.0%	2,528,926	9.0%	8.2%	9.9%	228,500	100.0%
Local Health District⁵							
Bear River	6.1%	149,705	5.8%	3.9%	8.5%	8,700	3.8%
Central	2.9%	71,046	10.8%	8.2%	14.2%	7,700	3.4%
Davis	10.7%	276,374	8.2%	6.0%	11.0%	22,600	9.9%
Salt Lake	39.6%	970,748	8.9%	7.5%	10.6%	86,700	37.9%
Southeastern	2.3%	52,832	11.5%	9.0%	14.7%	6,100	2.7%
Southwest	6.5%	182,295	12.4%	9.5%	16.0%	22,500	9.8%
Summit	1.4%	36,417	7.5%	5.3%	10.4%	2,700	1.2%
Tooele	2.0%	51,835	11.8%	9.6%	14.5%	6,100	2.7%
TriCounty	1.8%	42,327	7.4%	5.4%	10.0%	3,100	1.4%
Utah County	17.0%	453,977	8.4%	6.7%	10.4%	38,000	16.6%
Wasatch	0.7%	20,138	9.0%	6.8%	11.8%	1,800	0.8%
Weber-Morgan	8.9%	221,232	10.2%	7.5%	13.7%	22,600	9.9%
Total, All Utahns	100.0%	2,528,926	9.0%	8.2%	9.9%	228,500	100.0%
Health Insurance Coverage							
Insured	88.4%	2,236,100	9.3%	8.5%	10.3%	208,800	91.3%
Uninsured	11.6%	292,800	6.8%	5.1%	9.0%	19,900	8.7%
Total, All Utahns	100.0%	2,528,900	9.0%	8.2%	9.9%	228,500	100.0%
Annual Household Income							
Under \$20,000	10.1%	256,400	9.8%	7.2%	13.0%	25,000	10.8%
\$20,000 to <\$45,000	27.5%	695,800	9.5%	8.1%	11.3%	66,400	28.7%
\$45,000 to <\$65,000	23.8%	600,800	9.8%	7.9%	12.1%	59,000	25.5%
\$65,000 and Over	38.6%	975,900	8.3%	7.0%	9.7%	80,800	34.9%
Total, All Utahns	100.0%	2,528,900	9.0%	8.2%	9.9%	228,500	100.0%

See footnotes at end of table.



Table 9 (continued). Asthma: Percentage of Persons Who Had Ever Been Diagnosed With Asthma by Selected Demographic Characteristics, Utah Residents, 2005

Demographic Subgroup	Utah Population Distribution		Survey Estimates of Utahns Who Had Ever Been Diagnosed With Asthma				
	Percentage Distribution	Number of Persons ¹	Percentage of Persons ² 95% Confidence Bounds			Number of Persons ^{3,4}	Percentage Distribution of Persons Ever Diagnosed With Asthma by Subgroup ⁴
			Lower	Upper			
Poverty Status							
<100% Federal Poverty Level	10.6%	268,500	8.4%	6.2%	11.3%	22,600	9.9%
101-200% Federal Poverty Level	22.1%	559,400	8.5%	6.7%	10.8%	47,500	20.8%
201-300% Federal Poverty Level	38.3%	967,500	9.1%	7.8%	10.7%	88,500	38.8%
>300% Federal Poverty Level	29.0%	733,600	9.5%	8.0%	11.2%	69,500	30.5%
Total, All Utahns	100.0%	2,528,900	9.0%	8.2%	9.9%	228,500	100.0%
Education Level							
Some High School	6.7%	117,300	9.0%	6.0%	13.2%	10,600	6.4%
High School Grad/Some College	53.9%	938,900	9.7%	8.5%	11.0%	90,800	54.5%
Technical/Vocational Degree	10.0%	174,000	9.6%	7.2%	12.7%	16,700	10.0%
4 Year College Degree or More	29.3%	510,300	9.5%	7.9%	11.4%	48,500	29.1%
Total, All Utahns Aged 18+	100.0%	1,740,500	9.5%	8.6%	10.5%	165,600	100.0%
Employment Status							
Full Time	50.5%	879,600	8.5%	7.3%	9.8%	74,700	44.9%
Part Time	16.8%	291,600	9.2%	7.2%	11.6%	26,800	16.1%
Retired	11.0%	192,000	10.2%	8.0%	12.9%	19,600	11.8%
Keeping House	11.5%	199,700	10.6%	8.2%	13.7%	21,200	12.7%
Full Time Student	3.1%	53,300	14.4%	8.6%	23.2%	7,700	4.6%
Unemployed/Other	7.1%	124,300	13.1%	9.8%	17.5%	16,300	9.8%
Total, All Utahns Aged 18+	100.0%	1,740,500	9.5%	8.6%	10.5%	165,600	100.0%
Hispanic or Latino Ethnicity							
Hispanic or Latino	10.8%	274,100	3.3%	2.0%	5.4%	9,100	4.0%
Not Hispanic or Latino	89.2%	2,254,800	9.8%	8.9%	10.7%	221,100	96.0%
Total, All Utahns	100.0%	2,528,900	9.0%	8.2%	9.9%	228,500	100.0%
Marital Status							
Married	69.5%	1,209,400	9.3%	8.3%	10.5%	112,900	68.3%
Never Married	19.2%	334,300	8.4%	6.3%	11.0%	28,000	16.9%
Divorced/Separated/Widowed	11.3%	196,700	12.5%	9.8%	15.6%	24,500	14.8%
Total, All Utahns Aged 18+	100.0%	1,740,500	9.5%	8.6%	10.5%	165,600	100.0%

1 Population estimates of sex, age groups, and local health district based on 2005 baseline projections, Governor's Office of Planning and Budget, REMI model system; all others based on the 2005 UHSS and rounded to the nearest 100 persons.

2 Asymmetric confidence bounds were calculated using the logit transformation.

3 Rounded to the nearest 100 persons.

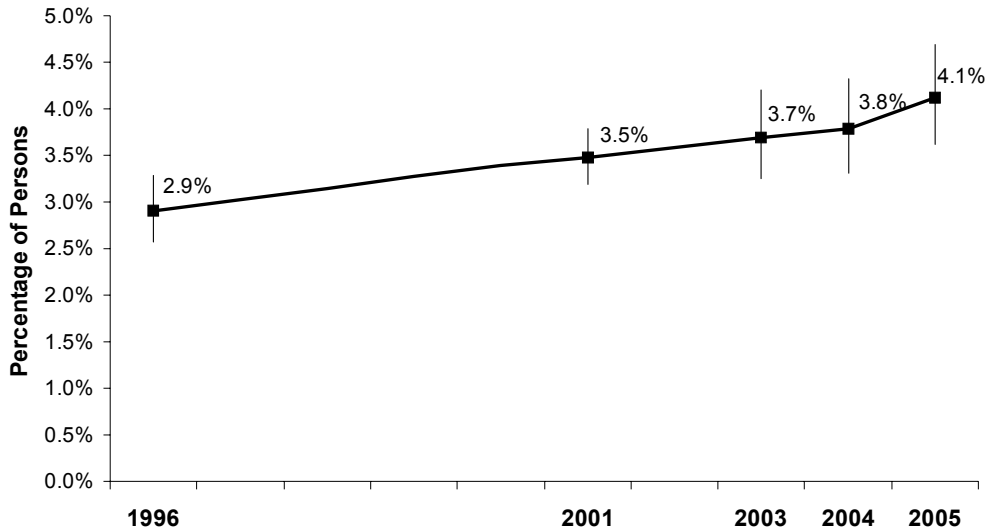
4 Figures in these columns may not sum to the total because of data weighting and missing values on the grouping variables.

5 These rates have not been age-adjusted. Age-adjusted rates are available upon request.

- Nine percent of Utahns reported that they had at some point been diagnosed with asthma.
- The prevalence of asthma among non-Hispanic persons was nearly three times more than for Hispanic persons (9.8% and 3.3% respectively).
- Insured Utahns were significantly more likely than the uninsured to report having been diagnosed with asthma. However, it is possible that the prevalence of asthma is higher for the uninsured because lack of insurance is a major barrier to care, and uninsured individuals would be less likely to have gone to a physician and be diagnosed with asthma.

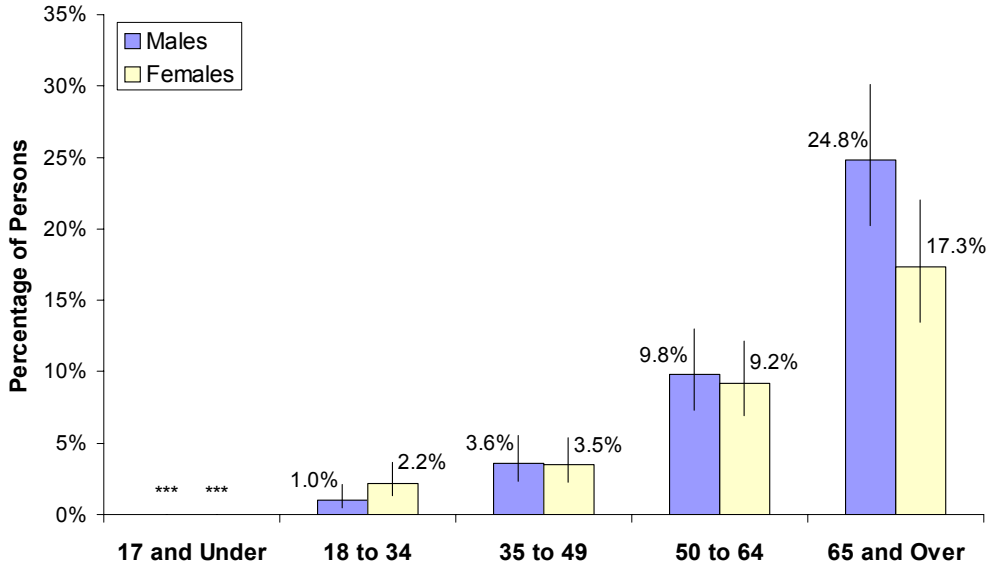


Figure 10.1 Percentage of Persons Who Had Been Diagnosed With Diabetes, Utah, 1996, 2001, 2003, 2004, and 2005



Note: Does not include gestational diabetes.

Figure 10.2 Percentage of Persons Who Had Ever Been Diagnosed With Diabetes by Age and Sex, Utah, 2005



*** Insufficient sample size for calculation of population estimates.

Note: Does not include gestational diabetes.

- In 2005, 4.1% of all Utahns had been diagnosed with diabetes.
- As is typical for the disease, diabetes affects older Utahns more. For Utahns aged 18 and over 5.9% had diabetes and for those aged 65 and over, 20.7% reported having been diagnosed with diabetes.



Table 10. Diabetes: Percentage of Persons Who Had Been Diagnosed With Diabetes by Selected Demographic Characteristics, Utah Residents, 2005

Demographic Subgroup	Utah Population Distribution		Survey Estimates of Utahns Who Had Diabetes				
	Percentage Distribution	Number of Persons ¹	Percentage of Persons ² 95% Confidence Bounds			Number of Persons ^{3,4}	Percentage Distribution of Persons Who Had Diabetes by Subgroup ⁴
			Lower	Upper			
2005 Utah Population	100.0%	2,528,926	4.1%	3.6%	4.7%	104,200	100.0%
Sex							
Male	50.2%	1,275,758	4.1%	3.4%	4.8%	51,900	49.8%
Female	49.8%	1,253,168	4.2%	3.5%	5.0%	52,300	50.2%
Total, All Utahns	100.0%	2,528,926	4.1%	3.6%	4.7%	104,200	100.0%
Age Group							
17 and Under	31.5%	788,452	***	***	***	***	***
18 to 34	29.1%	737,965	1.6%	1.0%	2.5%	11,700	11.2%
35 to 49	18.8%	465,964	3.5%	2.6%	4.8%	16,500	15.8%
50 to 64	12.1%	323,963	9.5%	7.7%	11.6%	30,800	29.6%
65 and Over	8.4%	212,582	20.7%	17.5%	24.3%	44,100	42.3%
Total, All Utahns	100.0%	2,528,926	4.1%	3.6%	4.7%	104,200	100.0%
Sex and Age							
Males, 17 and Under	16.2%	404,656	***	***	***	***	***
Males, 18 to 34	14.7%	376,364	1.0%	0.5%	2.1%	3,700	3.6%
Males, 35 to 49	9.5%	237,941	3.6%	2.3%	5.5%	8,500	8.2%
Males, 50 to 64	6.0%	161,253	9.8%	7.3%	13.0%	15,800	15.2%
Males, 65 and Over	3.7%	95,544	24.8%	20.2%	30.1%	23,700	22.8%
Females, 17 and Under	15.3%	383,796	***	***	***	***	***
Females, 18 to 34	14.4%	361,601	2.2%	1.3%	3.7%	8,000	7.7%
Females, 35 to 49	9.3%	228,023	3.5%	2.2%	5.4%	8,000	7.7%
Females, 50 to 64	6.1%	162,710	9.2%	6.9%	12.1%	15,000	14.4%
Females, 65 and Over	4.7%	117,038	17.3%	13.5%	22.0%	20,300	19.5%
Total, All Utahns	100.0%	2,528,926	4.1%	3.6%	4.7%	104,200	100.0%
Local Health District ⁵							
Bear River	6.1%	149,705	3.1%	2.0%	4.7%	4,700	4.5%
Central	2.9%	71,046	4.9%	3.3%	7.2%	3,500	3.4%
Davis	10.7%	276,374	3.3%	2.0%	5.1%	9,000	8.6%
Salt Lake	39.6%	970,748	4.7%	3.7%	5.8%	45,400	43.6%
Southeastern	2.3%	52,832	4.3%	2.8%	6.7%	2,300	2.2%
Southwest	6.5%	182,295	5.1%	3.6%	7.2%	9,200	8.8%
Summit	1.4%	36,417	2.0%	1.1%	3.6%	700	0.7%
Tooele	2.0%	51,835	4.0%	2.8%	5.8%	2,100	2.0%
TriCounty	1.8%	42,327	4.7%	3.2%	6.8%	2,000	1.9%
Utah County	17.0%	453,977	2.5%	1.8%	3.6%	11,500	11.0%
Wasatch	0.7%	20,138	2.5%	1.6%	3.9%	500	0.5%
Weber-Morgan	8.9%	221,232	6.0%	4.0%	8.8%	13,200	12.7%
Total, All Utahns	100.0%	2,528,926	4.1%	3.6%	4.7%	104,200	100.0%
Health Insurance Coverage							
Insured	88.4%	2,236,100	4.4%	3.9%	5.1%	99,400	94.6%
Uninsured	11.6%	292,800	2.0%	1.1%	3.6%	5,700	5.4%
Total, All Utahns	100.0%	2,528,900	4.1%	3.6%	4.7%	104,200	100.0%
Annual Household Income							
Under \$20,000	10.1%	256,400	5.9%	4.0%	8.6%	15,000	15.6%
\$20,000 to <\$45,000	27.5%	695,800	4.8%	3.8%	6.1%	33,300	34.5%
\$45,000 to <\$65,000	23.8%	600,800	3.8%	2.8%	5.2%	23,100	24.0%
\$65,000 and Over	38.6%	975,900	2.6%	2.0%	3.3%	25,000	25.9%
Total, All Utahns	100.0%	2,528,900	4.1%	3.6%	4.7%	104,200	100.0%

See footnotes at end of table.



Table 10 (continued). Diabetes: Percentage of Persons Who Had Been Diagnosed With Diabetes by Selected Demographic Characteristics, Utah Residents, 2005

Demographic Subgroup	Utah Population Distribution		Survey Estimates of Utahns Who Had Diabetes				
	Percentage Distribution	Number of Persons ¹	Percentage of Persons ²			Number of Persons ^{3,4}	Percentage Distribution of Persons Who Had Diabetes by Subgroup ⁴
			95% Confidence Bounds				
			Lower	Upper			
Poverty Status							
<100% Federal Poverty Level	10.6%	268,500	3.2%	1.8%	5.7%	8,600	8.9%
101-200% Federal Poverty Level	22.1%	559,400	3.7%	2.8%	5.0%	20,800	21.4%
201-300% Federal Poverty Level	38.3%	967,500	2.9%	2.3%	3.8%	28,400	29.3%
>300% Federal Poverty Level	29.0%	733,600	5.3%	4.3%	6.7%	39,200	40.4%
Total, All Utahns	100.0%	2,528,900	4.1%	3.6%	4.7%	104,200	100.0%
Education Level							
Some High School	6.7%	117,300	6.5%	4.1%	10.1%	7,600	7.5%
High School Grad/Some College	53.9%	938,900	6.7%	5.7%	7.9%	63,300	62.1%
Technical/Vocational Degree	10.0%	174,000	7.1%	5.0%	10.1%	12,400	12.2%
4 Year College Degree or More	29.3%	510,300	3.7%	2.8%	4.8%	18,700	18.3%
Total, All Utahns Aged 18+	100.0%	1,740,500	5.9%	5.2%	6.7%	103,200	100.0%
Employment Status							
Full Time	50.5%	879,600	4.3%	3.4%	5.3%	37,500	35.9%
Part Time	16.8%	291,600	2.8%	1.8%	4.3%	8,000	7.7%
Retired	11.0%	192,000	18.2%	15.1%	21.7%	34,900	33.4%
Keeping House	11.5%	199,700	4.0%	2.7%	6.1%	8,100	7.8%
Full Time Student	3.1%	53,300	***	***	***	***	***
Unemployed/Other	7.1%	124,300	12.4%	9.0%	16.9%	15,400	14.7%
Total, All Utahns Aged 18+	100.0%	1,740,500	5.9%	5.2%	6.7%	103,200	100.0%
Hispanic or Latino Ethnicity							
Hispanic or Latino	10.8%	274,100	5.0%	3.0%	8.4%	13,700	13.2%
Not Hispanic or Latino	89.2%	2,254,800	4.0%	3.5%	4.5%	90,100	86.8%
Total, All Utahns	100.0%	2,528,900	4.1%	3.6%	4.7%	104,200	100.0%
Marital Status							
Married	69.5%	1,209,400	5.6%	4.8%	6.5%	68,100	65.8%
Never Married	19.2%	334,300	3.2%	2.1%	5.0%	10,800	10.4%
Divorced/Separated/Widowed	11.3%	196,700	12.5%	9.9%	15.7%	24,600	23.8%
Total, All Utahns Aged 18+	100.0%	1,740,500	5.9%	5.2%	6.7%	103,200	100.0%

1 Population estimates of sex, age groups, and local health district based on 2005 baseline projections, Governor's Office of Planning and Budget, REMI model system; all others based on the 2005 UHSS and rounded to the nearest 100 persons.

2 Asymmetric confidence bounds were calculated using the logit transformation.

3 Rounded to the nearest 100 persons.

4 Figures in these columns may not sum to the total because of data weighting and missing values on the grouping variables.

5 These rates have not been age-adjusted. Age-adjusted rates are available upon request.

Note: Does not include gestational diabetes.

*** Insufficient sample size for calculation of population estimates.

- The prevalence of diabetes has been increasing over the past several years. Since 1996, the Utah Health Status Survey has measured a 41.6% increase in diabetes.
- Utahns in households with less than \$20,000 annual income (5.9%) and those in Weber-Morgan health district (6.0%) had higher rates of diabetes prevalence.



Figure 11.1 Percentage of Children Who Had Been Exposed to Cigarette Smoke Inside the Home, Utah Children Aged 17 and Under, 2001, 2003, 2004, and 2005

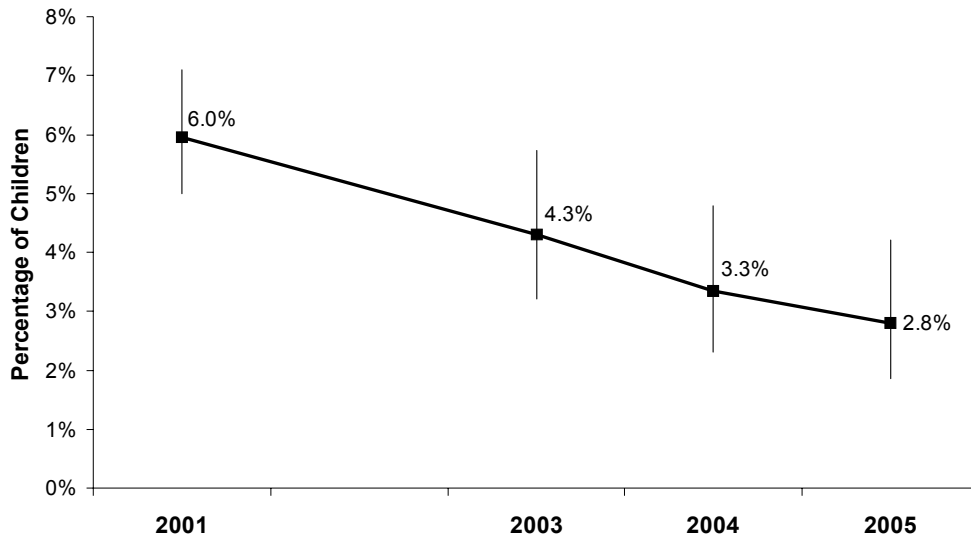
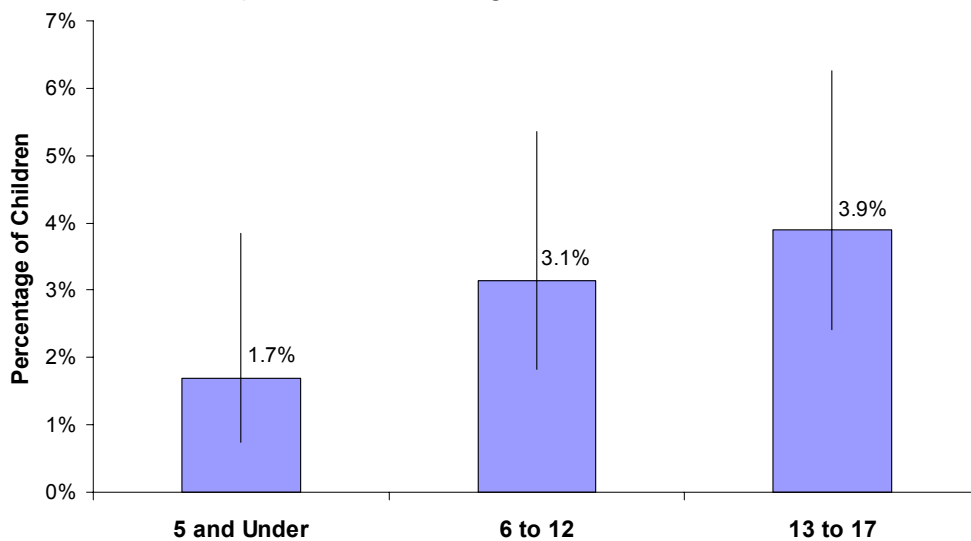


Figure 11.2 Percentage of Children Who Had Been Exposed to Cigarette Smoke Inside the Home by Age Group, Utah Children Aged 17 and Under, 2005



- In 2005, 2.8% of children had been exposed to cigarette smoke in the home. Overall there has been a 53.0% decline in cigarette smoke exposure in the home for children from 2001 to 2005.
- Some of this decrease is probably due to anti-tobacco campaigns such as those organized by the Utah Department of Health Tobacco Prevention and Control Program.



Table 11. Exposure to Cigarette Smoke: Percentage of Children Who Had Been Exposed to Cigarette Smoke Inside the Home Utah Children Aged 17 or Less, 2005

Demographic Subgroup	Utah Population Distribution		Survey Estimates of Children Who Had Been Exposed to Cigarette Smoke Inside the Home				
	Percentage Distribution	Number of Children ¹	Percentage of Children ²			Number of Children ^{3,4}	Percentage Distribution of Children Exposed to Cigarette Smoke by Category ⁴
			95% Confidence Bounds				
			Lower	Upper			
2005 Utah Population, Aged 17 and Under	100.0%	788,452	2.8%	1.9%	4.2%	22,100	100.0%
Age Group							
5 and Under	37.7%	297,212	1.7%	0.7%	3.8%	5,000	22.8%
6 to 12	37.0%	291,362	3.1%	1.8%	5.4%	9,100	41.6%
13 to 17	25.4%	199,878	3.9%	2.4%	6.3%	7,800	35.6%
Total, All Utahns Aged 17 and Under	100.0%	788,452	2.8%	1.9%	4.2%	22,100	100.0%
Local Health District ⁵							
Bear River	6.1%	47,995	***	***	***	***	***
Central	2.8%	21,797	***	***	***	***	***
Davis	11.4%	90,191	***	***	***	***	***
Salt Lake	36.9%	290,593	4.1%	2.1%	7.7%	11,800	53.6%
Southeastern	1.9%	15,228	6.8%	3.0%	14.8%	1,000	4.5%
Southwest	6.6%	51,768	***	***	***	***	***
Summit	1.3%	9,870	***	***	***	***	***
Tooele	2.2%	17,443	3.9%	1.6%	9.6%	700	3.2%
TriCounty	1.7%	13,356	12.7%	7.1%	21.5%	1,700	7.7%
Utah County	19.9%	156,733	***	***	***	***	***
Wasatch	0.8%	6,419	***	***	***	***	***
Weber-Morgan	8.5%	67,059	5.3%	1.8%	14.5%	3,600	16.4%
Total, All Utahns Aged 17 and Under	100.0%	788,452	2.8%	1.9%	4.2%	22,100	100.0%
Health Insurance Coverage							
Insured	91.5%	721,200	2.7%	1.7%	4.3%	19,500	88.2%
Uninsured	8.5%	67,200	3.8%	1.5%	9.1%	2,600	11.8%
Total, All Utahns Aged 17 and Under	100.0%	788,500	2.8%	1.9%	4.2%	22,100	100.0%
Annual Household Income							
Under \$20,000	7.2%	57,100	15.2%	7.3%	28.9%	8,700	38.5%
\$20,000 to <\$45,000	26.8%	211,000	2.5%	1.1%	5.6%	5,300	23.5%
\$45,000 to <\$65,000	25.2%	198,600	1.9%	0.8%	4.4%	3,800	16.8%
\$65,000 and Over	40.8%	321,800	1.5%	0.5%	4.2%	4,800	21.2%
Total, All Utahns Aged 17 and Under	100.0%	788,500	2.8%	1.9%	4.2%	22,100	100.0%
Poverty Status							
<100% Federal Poverty Level	11.9%	93,900	6.5%	2.7%	14.5%	6,100	27.0%
101-200% Federal Poverty Level	26.1%	205,500	2.5%	1.1%	5.7%	5,100	22.6%
201-300% Federal Poverty Level	47.1%	371,000	2.8%	1.4%	5.4%	10,300	45.6%
>300% Federal Poverty Level	15.0%	118,000	0.9%	0.3%	3.1%	1,100	4.9%
Total, All Utahns Aged 17 and Under	100.0%	788,500	2.8%	1.9%	4.2%	22,100	100.0%
Hispanic or Latino Ethnicity							
Hispanic or Latino	13.6%	107,400	5.3%	2.1%	12.6%	5,700	29.2%
Not Hispanic or Latino	86.4%	681,100	2.0%	1.3%	3.2%	13,800	70.8%
Total, All Utahns Aged 17 and Under	100.0%	788,500	2.8%	1.9%	4.2%	22,100	100.0%

See footnotes at end of table.



Table 11 (continued). Exposure to Cigarette Smoke: Percentage of Children Who Had Been Exposed to Cigarette Smoke Inside the Home Utah Children Aged 17 or Less, 2005

Demographic Subgroup	Utah Population Distribution		Survey Estimates of Children Who Had Been Exposed to Cigarette Smoke Inside the Home				
	Percentage Distribution	Number of Children ¹	Percentage of Children ²			Number of Children ^{3,4}	Percentage Distribution of Children Exposed to Cigarette Smoke by Category ⁴
			95% Confidence Bounds				
			Lower	Upper			
Asthma							
Under Medical Care for Asthma	8.2%	64,300	4.3%	1.9%	9.7%	2,800	12.7%
Not Under Medical Care for Asthma	91.8%	724,100	2.7%	1.7%	4.0%	19,300	87.3%
Total, All Utahns Aged 17 and Under	100.0%	788,500	2.8%	1.9%	4.2%	22,100	100.0%

1 Population estimates of age groups and local health district based on 2005 baseline projections, Governor's Office of Planning and Budget, REMI model system; all others based on the 2005 UHSS and rounded to the nearest 100 persons.

2 Asymmetric confidence bounds were calculated using the logit transformation.

3 Rounded to the nearest 100 persons.

4 Figures in these columns may not sum to the total because of missing values on the grouping variables.

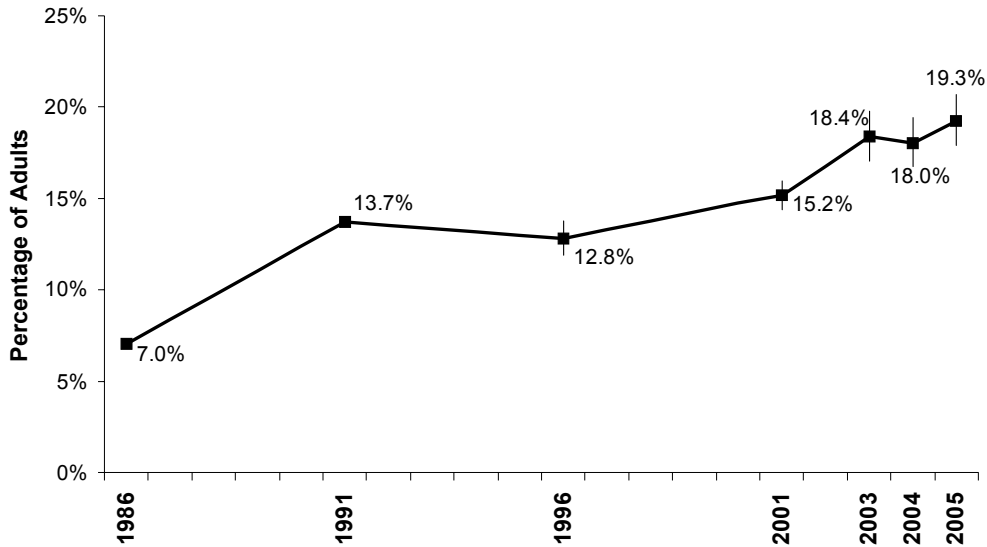
5 These rates have not been age-adjusted. Age-adjusted rates are available upon request.

*** Insufficient sample size for calculation of population estimates.

- For Utah children who were exposed to cigarette smoke in the home, the prevalence increased with age. Those aged 13 to 17 had the highest rate (3.9%) compared to other age groups.
- In the TriCounty health district 12.7% of children had been exposed to cigarette smoke in the home. This was the highest rate amongst all local health districts in Utah with enough cases to report.
- Household income and poverty status were both negatively associated with cigarette smoke exposure. Among Utah children living in households with incomes under \$20,000 or less than 100% poverty 15.2% and 6.5% were exposed to cigarette smoke (respectively).
- Hispanic children were significantly more likely than non-Hispanic children to be exposed to cigarette smoke in the home (5.3% and 2.0%, respectively).
- Of all children exposed to cigarette smoke in the home, 12.7% had been diagnosed with asthma, compared with 8.2% of all children statewide.

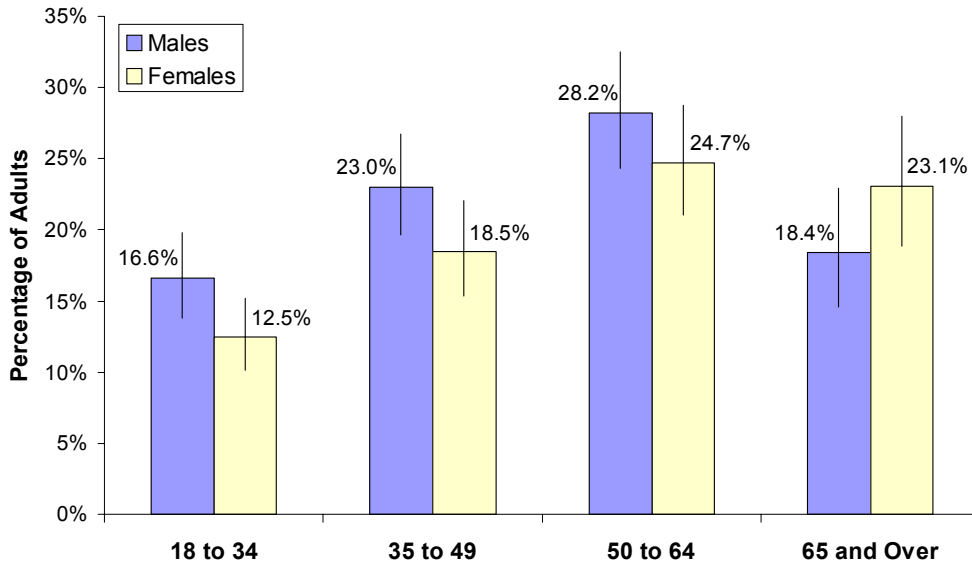


Figure 12.1 Percentage of Adults Who Were Obese, Utah Adults Aged 18 and Over, Utah, 1986, 1991, 1996, 2001, and 2003-2005



Note: Obesity was defined as a BMI of >30 or more. BMI is calculated by dividing weight in kilograms by the square of height in meters. For example, a male or female who is 5'8" is considered obese if he or she weighs 197.5 or more pounds.

Figure 12.2 Percentage of Adults Who Were Obese by Age and Sex, Utah Adults Aged 18 and Over, 2005



Note: Obesity was defined as a BMI of >30 or more. BMI is calculated by dividing weight in kilograms by the square of height in meters. For example, a male or female who is 5'8" is considered obese if he or she weighs 197.5 or more pounds.

- In 2005, 19.3% of adult Utahns (aged 18 and over) were obese. This represents an estimated 335,300 persons.



Table 12. Obesity: Percentage of Adults Who Were Obese
by Selected Demographic Characteristics, Utah Residents Aged 18 and Over, 2005

Demographic Subgroup	Utah Population Distribution		Survey Estimates of Utah Adults Who Were Obese				
	Percentage Distribution	Number of Adults ¹	Percentage of Adults ²			Number of Adults ^{3,4}	Percentage Distribution of Adults Who Were Obese by Subgroup ⁴
			95% Confidence Bounds				
			Lower	Upper			
2005 Utah Population, Adults Aged 18+	100.0%	1,740,474	19.3%	17.9%	20.7%	335,300	100.0%
Sex							
Male	50.0%	871,102	20.7%	18.8%	22.7%	180,200	53.8%
Female	50.0%	869,372	17.8%	16.1%	19.5%	154,500	46.2%
Total, All Utahns Aged 18+	100.0%	1,740,474	19.3%	17.9%	20.7%	335,300	100.0%
Age Group							
18 to 34	42.4%	737,965	14.6%	12.7%	16.8%	107,800	32.2%
35 to 49	26.8%	465,964	20.9%	18.4%	23.6%	97,300	29.0%
50 to 64	18.6%	323,963	26.5%	23.7%	29.5%	85,800	25.6%
65 and Over	12.2%	212,582	20.9%	17.9%	24.2%	44,400	13.2%
Total, All Utahns Aged 18+	100.0%	1,740,474	19.3%	17.9%	20.7%	335,300	100.0%
Sex and Age							
Males, 18 to 34	21.6%	376,364	16.6%	13.8%	19.8%	62,500	18.7%
Males, 35 to 49	13.7%	237,941	23.0%	19.7%	26.8%	54,800	16.4%
Males 50 to 64	9.3%	161,253	28.2%	24.3%	32.5%	45,500	13.6%
Males, 65 and Over	5.5%	95,544	18.4%	14.5%	22.9%	17,500	5.2%
Females, 18 to 34	20.8%	361,601	12.5%	10.2%	15.2%	45,000	13.4%
Females, 35 to 49	13.1%	228,023	18.5%	15.4%	22.1%	42,200	12.6%
Females 50 to 64	9.3%	162,710	24.7%	21.1%	28.8%	40,200	12.0%
Females, 65 and Over	6.7%	117,038	23.1%	18.9%	28.0%	27,000	8.1%
Total, All Utahns Aged 18+	100.0%	1,740,474	19.3%	17.9%	20.7%	335,300	100.0%
Local Health District⁵							
Bear River	5.8%	101,710	15.5%	11.8%	20.1%	15,800	4.7%
Central	2.8%	49,249	23.3%	18.8%	28.3%	11,500	3.4%
Davis	10.7%	186,183	20.8%	16.8%	25.5%	38,700	11.5%
Salt Lake	39.1%	680,155	18.8%	16.5%	21.4%	127,900	38.2%
Southeastern	2.2%	37,604	19.0%	15.2%	23.6%	7,200	2.1%
Southwest	7.5%	130,527	23.1%	18.7%	28.1%	30,100	9.0%
Summit	1.5%	26,547	10.1%	6.7%	14.8%	2,700	0.8%
Tooele	2.0%	34,392	21.6%	17.4%	26.5%	7,400	2.2%
TriCounty	1.7%	28,971	25.0%	20.0%	30.9%	7,200	2.1%
Utah County	17.1%	297,244	17.3%	14.3%	20.8%	51,400	15.3%
Wasatch	0.8%	13,719	17.0%	13.3%	21.3%	2,300	0.7%
Weber-Morgan	8.9%	154,173	21.3%	16.7%	26.9%	32,900	9.8%
Total, All Utahns Aged 18+	100.0%	1,740,474	19.3%	17.9%	20.7%	335,300	100.1%
Health Insurance Coverage							
Insured	87.0%	1,514,800	19.4%	18.0%	20.9%	294,100	87.0%
Uninsured	13.0%	225,600	19.5%	15.6%	24.0%	44,000	13.0%
Total, All Utahns Aged 18+	100.0%	1,740,500	19.3%	17.9%	20.7%	335,300	100.0%
Annual Household Income							
Under \$20,000	11.5%	200,000	18.1%	13.9%	23.3%	36,200	10.7%
\$20,000 to <\$45,000	27.8%	484,700	23.2%	20.4%	26.2%	112,400	33.2%
\$45,000 to <\$65,000	23.1%	402,000	18.9%	16.3%	21.8%	76,000	22.4%
\$65,000 and Over	37.6%	653,700	17.5%	15.2%	20.0%	114,300	33.7%
Total, All Utahns Aged 18+	100.0%	1,740,500	19.3%	17.9%	20.7%	335,300	100.0%

See footnotes at end of table.



Table 12 (continued). Obesity: Percentage of Adults Who Were Obese by Selected Demographic Characteristics, Utah Residents Aged 18 and Over, 2005

Demographic Subgroup	Utah Population Distribution		Survey Estimates of Utah Adults Who Were Obese				
	Percentage Distribution	Number of Adults ¹	Percentage of Adults ²			Number of Adults ^{3,4}	Percentage Distribution of Adults Who Were Obese by Subgroup ⁴
			95% Confidence Bounds				
			Lower	Upper			
Poverty Status							
<100% Federal Poverty Level	10.0%	173,300	16.0%	12.0%	20.9%	27,700	8.1%
101-200% Federal Poverty Level	20.2%	351,300	24.5%	20.9%	28.5%	86,100	25.2%
201-300% Federal Poverty Level	34.2%	594,400	18.6%	16.2%	21.2%	110,600	32.3%
>300% Federal Poverty Level	35.7%	621,500	19.0%	16.8%	21.4%	117,800	34.4%
Total, All Utahns Aged 18+	100.0%	1,740,500	19.3%	17.9%	20.7%	335,300	100.0%
Education Level							
Some High School	6.7%	117,300	25.6%	19.9%	32.3%	30,100	9.0%
High School Grad/Some College	53.9%	938,900	19.5%	17.7%	21.4%	183,000	54.6%
Technical/Vocational Degree	10.0%	174,000	22.4%	18.5%	26.9%	39,000	11.6%
4 Year College Degree or More	29.3%	510,300	16.3%	14.3%	18.5%	83,100	24.8%
Total, All Utahns Aged 18+	100.0%	1,740,500	19.3%	17.9%	20.7%	335,300	100.0%
Employment Status							
Full Time	50.5%	879,600	21.0%	19.2%	23.1%	185,000	55.0%
Part Time	16.8%	291,600	13.4%	10.7%	16.6%	38,900	11.6%
Retired	11.0%	192,000	21.4%	18.3%	25.0%	41,200	12.2%
Keeping House	11.5%	199,700	18.9%	15.5%	22.9%	37,700	11.2%
Full Time Student	3.1%	53,300	8.1%	4.0%	15.6%	4,300	1.3%
Unemployed/Other	7.1%	124,300	23.6%	19.0%	28.8%	29,300	8.7%
Total, All Utahns Aged 18+	100.0%	1,740,500	19.3%	17.9%	20.7%	335,300	100.0%
Hispanic or Latino Ethnicity							
Hispanic or Latino	9.5%	164,600	22.1%	16.4%	29.1%	36,400	10.9%
Not Hispanic or Latino	90.5%	1,575,900	18.9%	17.6%	20.3%	298,200	89.1%
Total, All Utahns Aged 18+	100.0%	1,740,500	19.3%	17.9%	20.7%	335,300	100.0%
Marital Status							
Married	69.5%	1,209,400	20.2%	18.7%	21.8%	244,200	72.9%
Never Married	19.2%	334,300	14.5%	11.6%	17.9%	48,400	14.5%
Divorced/Separated/Widowed	11.3%	196,700	21.5%	18.1%	25.3%	42,300	12.6%
Total, All Utahns Aged 18+	100.0%	1,740,500	19.3%	17.9%	20.7%	335,300	100.0%

1 Population estimates of sex, age groups, and local health district based on 2005 baseline projections, Governor's Office of Planning and Budget, REMI model system; all others based on the 2005 UHSS and rounded to the nearest 100 persons.

2 Asymmetric confidence bounds were calculated using the logit transformation.

3 Rounded to the nearest 100 persons.

4 Figures in these columns may not sum to the total because of data weighting and missing values on the grouping variables.

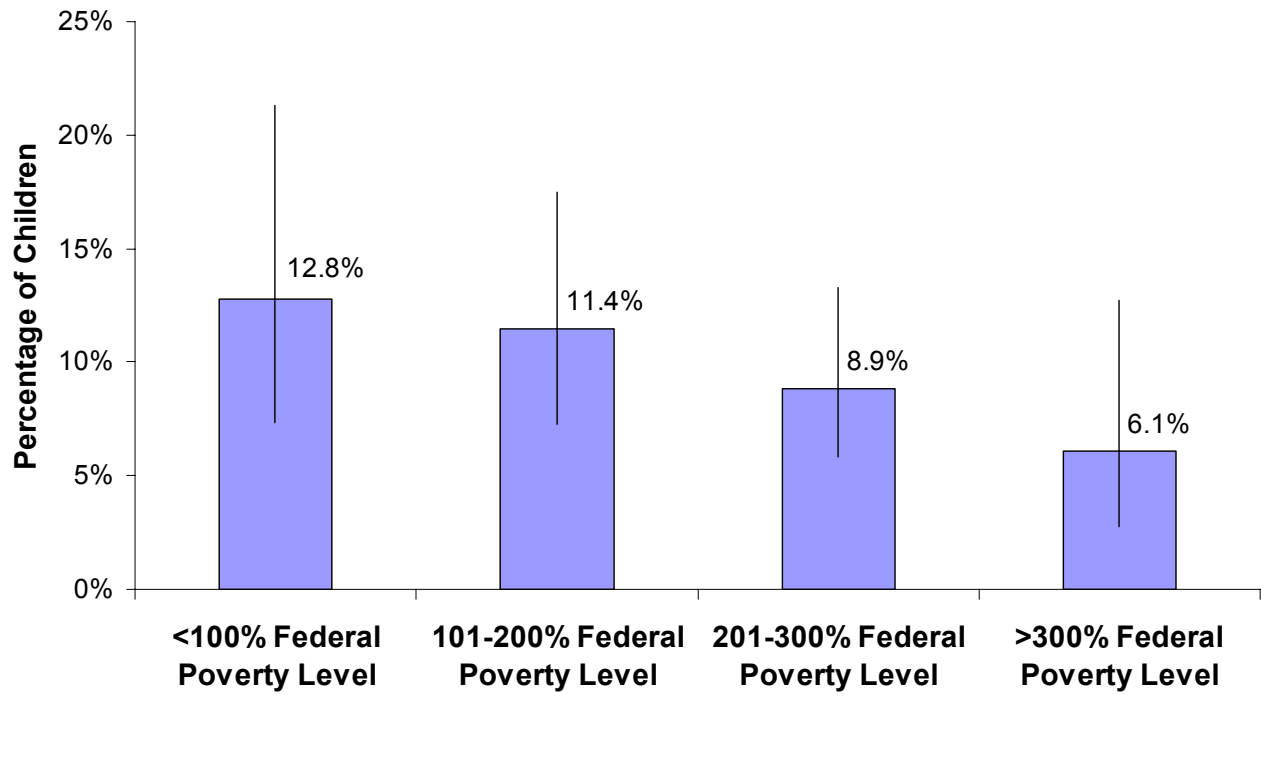
5 These rates have not been age-adjusted. Age-adjusted rates are available upon request.

Note: Obesity was defined as a BMI of 30 or more. BMI is calculated by dividing weight in kilograms by the square of height in meters. For example, a male or female who is 5'8" is considered obese if he or she weighs 197.5 or more pounds.

- The prevalence of obesity has been increasing steadily over the past twenty years. From 1986 (7.0%) to 2005 (19.3%), the prevalence of obesity in Utah adults increased by 175%.
- Males were significantly more likely to be obese than females (20.7% vs. 17.8% respectively).
- Males aged 50 to 64 were the most likely to be obese (28.2%) compared to other age and gender groups.



Figure 13.1 Percentage of Children Who Were Described as Slightly or Very Overweight by Poverty Status, Utah Children Aged 6 to 11, 2005



- The Utah Health Status Survey asked about weight for children aged 6 to 11 in 2005. Respondents were asked how they would describe the weight of the children in the household. Respondents reported that nearly ten percent of these children (9.6%) were either slightly or very overweight.
- Females aged 6 to 11 were more likely to be reported as overweight than males (10.5% vs. 8.7%).
- Uninsured children (aged 6 to 11) were more likely to be reported as overweight than insured children (14.0% vs. 9.4%).
- Children living in poverty were more likely than other children to be reported as overweight.
- Hispanic or Latino children were significantly more likely than non-Hispanic children (aged 6 to 11) to be reported as overweight.



Table 13. Obesity: Percentage of Children Who Were Described as Slightly or Very Overweight by Selected Demographic Characteristics, Utah Children Aged 6 to 11, 2005

Demographic Subgroup	Utah Population Distribution		Survey Estimates of Utah Children Who Were Overweight				
	Percentage Distribution	Number of Children ¹	Percentage of Children ²			Number of Children ^{3,4}	Percentage Distribution of Children Who Were Overweight by Subgroup ⁴
			95% Confidence Bounds				
			Lower	Upper			
2005 Utah Population, Aged 6 to 11	100.0%	251,712	9.6%	7.5%	12.2%	24,100	100.0%
Sex							
Male	51.4%	129,459	8.7%	6.2%	12.1%	11,200	46.7%
Female	48.6%	122,253	10.5%	7.5%	14.6%	12,800	53.3%
Total, All Utah Children Aged 6 to 11	100.0%	251,712	9.6%	7.5%	12.2%	24,100	100.0%
Local Health District⁵							
Bear River	6.0%	15,085	8.1%	3.3%	18.3%	1,200	5.0%
Central	2.8%	7,169	13.9%	7.6%	23.9%	1,000	4.1%
Davis	11.6%	29,211	9.5%	4.3%	19.7%	2,800	11.6%
Salt Lake	37.0%	93,189	7.7%	4.3%	13.4%	7,200	29.8%
Southeastern	1.9%	4,868	14.3%	7.0%	26.9%	700	2.9%
Southwest	6.4%	16,203	15.5%	7.1%	30.5%	2,500	10.3%
Summit	1.2%	3,103	10.2%	4.3%	22.3%	300	1.2%
Tooele	2.4%	5,926	8.3%	3.7%	17.7%	500	2.1%
TriCounty	1.6%	4,079	15.9%	8.9%	26.8%	600	2.5%
Utah County	19.5%	49,180	8.6%	5.0%	14.2%	4,200	17.4%
Wasatch	0.8%	2,006	8.2%	3.5%	17.9%	200	0.8%
Weber-Morgan	8.6%	21,693	13.9%	7.4%	24.6%	3,000	12.4%
Total, All Utah Children Aged 6 to 11	100.0%	251,712	9.6%	7.5%	12.2%	24,100	100.0%
Health Insurance Coverage							
Insured	90.2%	227,000	9.4%	7.2%	12.2%	21,300	85.9%
Uninsured	9.8%	24,800	14.0%	7.0%	26.0%	3,500	14.1%
Total, All Utah Children Aged 6 to 11	100.0%	251,700	9.6%	7.5%	12.2%	24,100	100.0%
Annual Household Income							
Under \$20,000	5.5%	13,800	21.3%	11.1%	37.2%	2,900	11.9%
\$20,000 to <\$45,000	25.4%	63,900	9.3%	5.4%	15.6%	6,000	24.6%
\$45,000 to <\$65,000	27.5%	69,200	11.6%	7.8%	17.0%	8,000	32.8%
\$65,000 and Over	41.7%	104,900	7.2%	4.2%	12.1%	7,500	30.7%
Total, All Utah Children Aged 6 to 11	100.0%	251,700	9.6%	7.5%	12.2%	24,100	100.0%
Poverty Status							
<100% Federal Poverty Level	10.9%	27,400	12.8%	7.4%	21.3%	3,500	14.4%
101-200% Federal Poverty Level	27.7%	69,700	11.4%	7.3%	17.5%	8,000	32.9%
201-300% Federal Poverty Level	48.8%	122,800	8.9%	5.8%	13.3%	10,900	44.9%
>300% Federal Poverty Level	12.6%	31,800	6.1%	2.8%	12.7%	1,900	7.8%
Total, All Utah Children Aged 6 to 11	100.0%	251,700	9.6%	7.5%	12.2%	24,100	100.0%
Hispanic or Latino Ethnicity							
Hispanic or Latino	13.1%	33,100	18.4%	10.1%	31.3%	6,100	27.1%
Not Hispanic or Latino	86.9%	218,700	7.5%	5.8%	9.8%	16,400	72.9%
Total, All Utah Children Aged 6 to 11	100.0%	251,700	9.6%	7.5%	12.2%	24,100	100.0%

1 Population estimates of sex, age group, and local health district based on 2005 baseline projections, Governor's Office of Planning and Budget, REMI model system; all others based on the 2005 UHSS and rounded to the nearest 100 persons.

2 Asymmetric confidence bounds were calculated using the logit transformation.

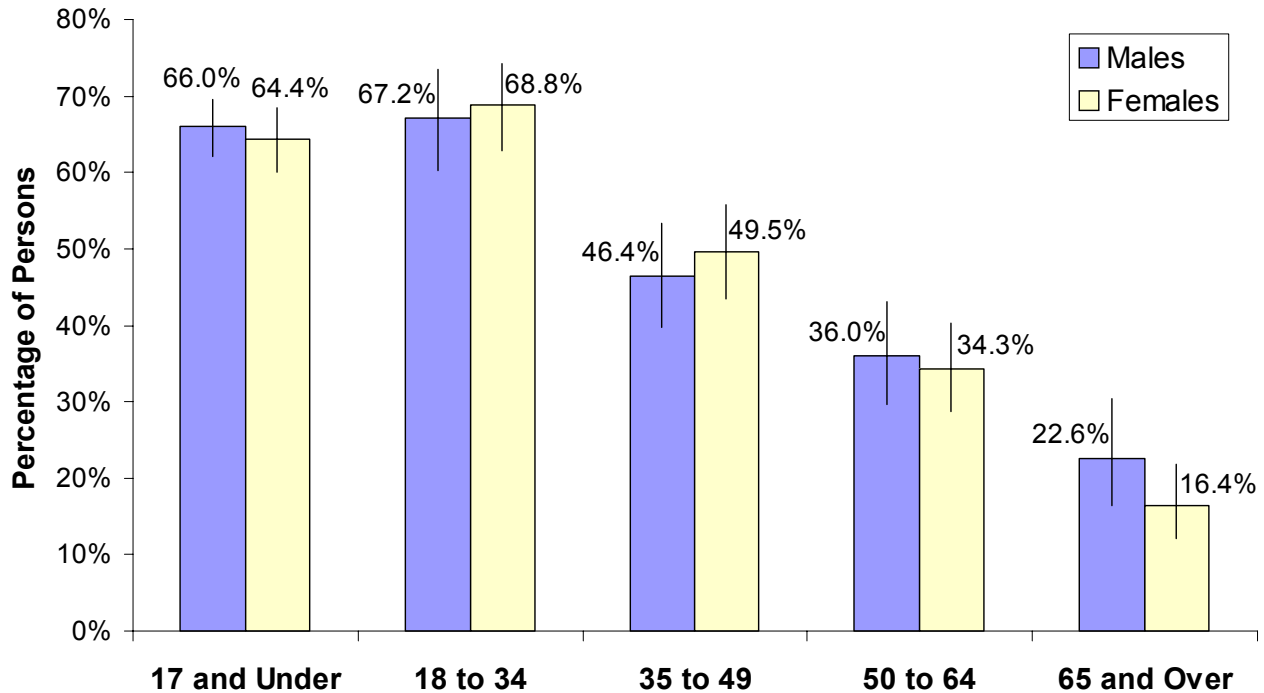
3 Rounded to the nearest 100 persons.

4 Figures in these columns may not sum to the total because of data weighting and missing values on the grouping variables.

5 These rates have not been age-adjusted. Age-adjusted rates are available upon request.



Figure 14.1 Percentage of Persons Who Had Received a Complete Hepatitis B Vaccine Series by Age and Sex, Utah, 2005



- Hepatitis B is a serious disease caused by a virus that attacks the liver. The virus, which is called hepatitis B virus (HBV), can cause lifelong infection, cirrhosis (scarring) of the liver, liver cancer, liver failure, and death. There is a Hepatitis B vaccine series consisting of three shots. It is recommended that all children aged 0 to 18 get the vaccine series, along with several risk groups. <http://www.cdc.gov/ncidod/diseases/hepatitis/b/fact.htm>
- Those aged 18 to 34 years were the most likely aged group to have had the complete Hepatitis B vaccine series (68.1%), while those aged 65 and over were the least likely (18.7%).



Table 14. Immunizations: Percentage of Persons Who Had Received a Complete Hepatitis B Vaccine Series by Selected Demographic Characteristics, Utah Residents, 2005

Demographic Subgroup	Utah Population Distribution		Survey Estimates of Utahns Who Had a Complete Hepatitis B Vaccine Series				
	Percentage Distribution	Number of Persons ¹	Percentage of Persons ²			Number of Persons ^{3,4}	Percentage Distribution of Persons Who Had a Complete Hepatitis B Series by Subgroup ⁴
			95% Confidence Bounds				
			Lower	Upper			
2005 Utah Population	100.0%	2,528,926	56.3%	54.1%	58.4%	1,423,000	100.0%
Sex							
Male	50.2%	1,275,758	57.7%	54.9%	60.4%	736,100	51.7%
Female	49.8%	1,253,168	55.0%	52.3%	57.6%	688,900	48.3%
Total, All Utahns	100.0%	2,528,926	56.3%	54.1%	58.4%	1,423,000	100.0%
Age Group							
17 and Under	31.5%	788,452	65.2%	61.8%	68.4%	514,000	36.9%
18 to 34	29.1%	737,965	68.1%	63.6%	72.2%	502,200	36.0%
35 to 49	18.8%	465,964	48.0%	43.4%	52.6%	223,600	16.1%
50 to 64	12.1%	323,963	35.0%	30.8%	39.5%	113,500	8.1%
65 and Over	8.4%	212,582	18.7%	15.0%	23.1%	39,800	2.9%
Total, All Utahns	100.0%	2,528,926	56.3%	54.1%	58.4%	1,423,000	100.0%
Sex and Age							
Males, 17 and Under	16.2%	404,656	66.0%	62.2%	69.6%	267,100	19.2%
Males, 18 to 34	14.7%	376,364	67.2%	60.2%	73.4%	252,700	18.1%
Males, 35 to 49	9.5%	237,941	46.4%	39.7%	53.3%	110,500	7.9%
Males 50 to 64	6.0%	161,253	36.0%	29.6%	43.0%	58,100	4.2%
Males, 65 and Over	3.7%	95,544	22.6%	16.4%	30.3%	21,600	1.5%
Females, 17 and Under	15.3%	383,796	64.4%	60.1%	68.4%	247,000	17.7%
Females, 18 to 34	14.4%	361,601	68.8%	62.9%	74.2%	248,900	17.9%
Females, 35 to 49	9.3%	228,023	49.5%	43.4%	55.7%	112,900	8.1%
Females 50 to 64	6.1%	162,710	34.3%	28.8%	40.2%	55,800	4.0%
Females, 65 and Over	4.7%	117,038	16.4%	12.0%	21.9%	19,200	1.4%
Total, All Utahns	100.0%	2,528,926	56.3%	54.1%	58.4%	1,423,000	100.0%
Local Health District⁵							
Bear River	6.1%	149,705	58.1%	50.9%	65.0%	87,000	6.1%
Central	2.9%	71,046	46.7%	39.9%	53.6%	33,200	2.3%
Davis	10.7%	276,374	59.2%	52.4%	65.7%	163,700	11.5%
Salt Lake	39.6%	970,748	57.6%	53.7%	61.4%	558,800	39.2%
Southeastern	2.3%	52,832	48.4%	41.3%	55.5%	25,600	1.8%
Southwest	6.5%	182,295	53.2%	46.1%	60.1%	96,900	6.8%
Summit	1.4%	36,417	60.6%	53.3%	67.4%	22,100	1.6%
Tooele	2.0%	51,835	57.8%	51.3%	64.0%	30,000	2.1%
TriCounty	1.8%	42,327	41.2%	35.3%	47.4%	17,400	1.2%
Utah County	17.0%	453,977	59.9%	54.8%	64.8%	271,900	19.1%
Wasatch	0.7%	20,138	54.3%	47.6%	60.9%	10,900	0.8%
Weber-Morgan	8.9%	221,232	48.1%	40.9%	55.5%	106,500	7.5%
Total, All Utahns	100.0%	2,528,926	56.3%	54.1%	58.4%	1,423,000	100.0%
Health Insurance Coverage							
Insured	88.4%	2,236,100	56.4%	54.2%	58.6%	1,261,900	89.0%
Uninsured	11.6%	292,800	53.2%	45.3%	60.9%	155,600	11.0%
Total, All Utahns	100.0%	2,528,900	56.3%	54.1%	58.4%	1,423,000	100.0%

See footnotes at end of table.



Table 14 (continued). Immunizations: Percentage of Persons Who Had Received a Complete Hepatitis B Vaccine Series by Selected Demographic Characteristics, Utah Residents, 2005

Demographic Subgroup	Utah Population Distribution		Survey Estimates of Utahns Who Had a Complete Hepatitis B Vaccine Series				
	Percentage Distribution	Number of Persons ¹	Percentage of Persons ²			Number of Persons ^{3,4}	Percentage Distribution of Persons Who Had a Complete Hepatitis B Series by Subgroup ⁴
			95% Confidence Bounds				
			Lower	Upper			
Annual Household Income							
Under \$20,000	10.1%	256,400	49.2%	42.4%	56.0%	126,200	8.6%
\$20,000 to <\$45,000	27.5%	695,800	58.8%	54.8%	62.7%	409,000	28.0%
\$45,000 to <\$65,000	23.8%	600,800	59.2%	54.6%	63.7%	355,700	24.4%
\$65,000 and Over	38.6%	975,900	58.4%	54.5%	62.1%	569,500	39.0%
Total, All Utahns	100.0%	2,528,900	56.3%	54.1%	58.4%	1,423,000	100.0%
Poverty Status							
<100% Federal Poverty Level	10.6%	268,500	60.2%	52.3%	67.6%	161,600	11.1%
101-200% Federal Poverty Level	22.1%	559,400	59.6%	54.9%	64.1%	333,300	22.9%
201-300% Federal Poverty Level	38.3%	967,500	59.5%	55.7%	63.2%	575,800	39.6%
>300% Federal Poverty Level	29.0%	733,600	52.3%	48.6%	56.0%	384,000	26.4%
Total, All Utahns	100.0%	2,528,900	56.3%	54.1%	58.4%	1,423,000	100.0%
Education Level							
Some High School	6.7%	117,300	34.3%	24.7%	45.5%	40,300	4.9%
High School Grad/Some College	53.9%	938,900	43.5%	40.2%	46.9%	408,600	49.8%
Technical/Vocational Degree	10.0%	174,000	48.8%	41.6%	55.9%	84,800	10.3%
4 Year College Degree or More	29.3%	510,300	56.3%	52.0%	60.5%	287,500	35.0%
Total, All Utahns Aged 18+	100.0%	1,740,500	47.5%	45.1%	49.9%	826,300	100.0%
Employment Status							
Full Time	50.5%	879,600	52.8%	49.3%	56.4%	464,800	54.8%
Part Time	16.8%	291,600	56.3%	50.1%	62.4%	164,300	19.4%
Retired	11.0%	192,000	22.5%	18.3%	27.4%	43,300	5.1%
Keeping House	11.5%	199,700	43.8%	36.8%	51.0%	87,500	10.3%
Full Time Student	3.1%	53,300	77.1%	61.1%	87.8%	41,100	4.8%
Unemployed/Other	7.1%	124,300	37.5%	29.5%	46.2%	46,600	5.5%
Total, All Utahns Aged 18+	100.0%	1,740,500	47.5%	45.1%	49.9%	826,300	100.0%
Hispanic or Latino Ethnicity							
Hispanic or Latino	10.8%	274,100	60.9%	51.8%	69.3%	166,900	11.8%
Not Hispanic or Latino	89.2%	2,254,800	55.4%	53.2%	57.6%	1,249,800	88.2%
Total, All Utahns	100.0%	2,528,900	56.3%	54.1%	58.4%	1,423,000	100.0%
Marital Status							
Married	69.5%	1,209,400	49.1%	46.2%	52.0%	594,300	69.7%
Never Married	19.2%	334,300	57.9%	50.7%	64.8%	193,700	22.7%
Divorced/Separated/Widowed	11.3%	196,700	32.6%	27.7%	37.9%	64,100	7.5%
Total, All Utahns Aged 18+	100.0%	1,740,500	47.5%	45.1%	49.9%	826,300	100.0%

1 Population estimates of sex, age groups, and local health district based on 2005 baseline projections, Governor's Office of Planning and Budget, REMI model system; all others based on the 2005 UHSS and rounded to the nearest 100 persons.

2 Asymmetric confidence bounds were calculated using the logit transformation.

3 Rounded to the nearest 100 persons.

4 Figures in these columns may not sum to the total because of data weighting and missing values on the grouping variables.

5 These rates have not been age-adjusted. Age-adjusted rates are available upon request.

- 56.3% of Utahns reported having received the full series (3 shots) for Hepatitis B.
- Although a slight majority of Utahns had received the complete Hepatitis B series, 43.7% had not received this vaccine series.