



Figure 11.1 Percentage of Children Who Had Been Exposed to Cigarette Smoke Inside the Home, Utah Children Aged 17 and Under, 2001, 2003, 2004, and 2005

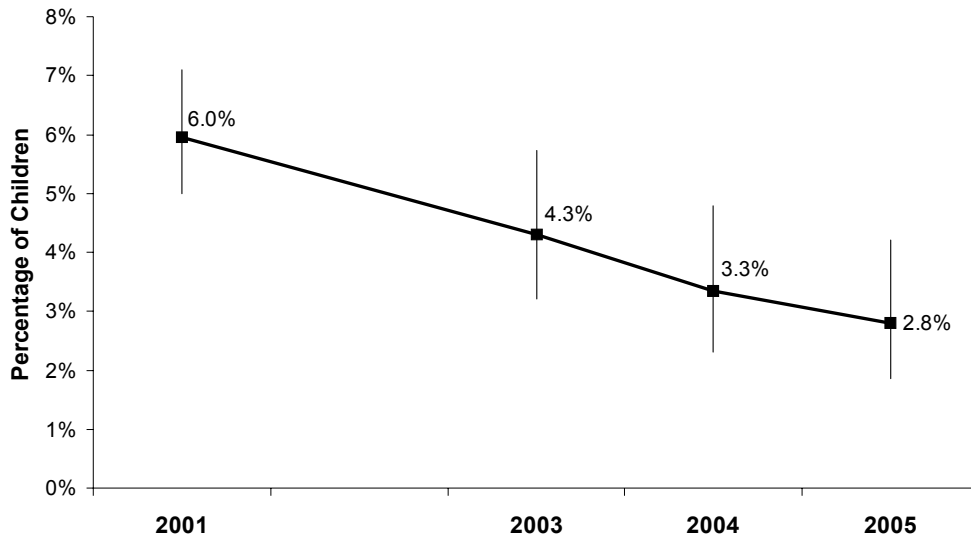
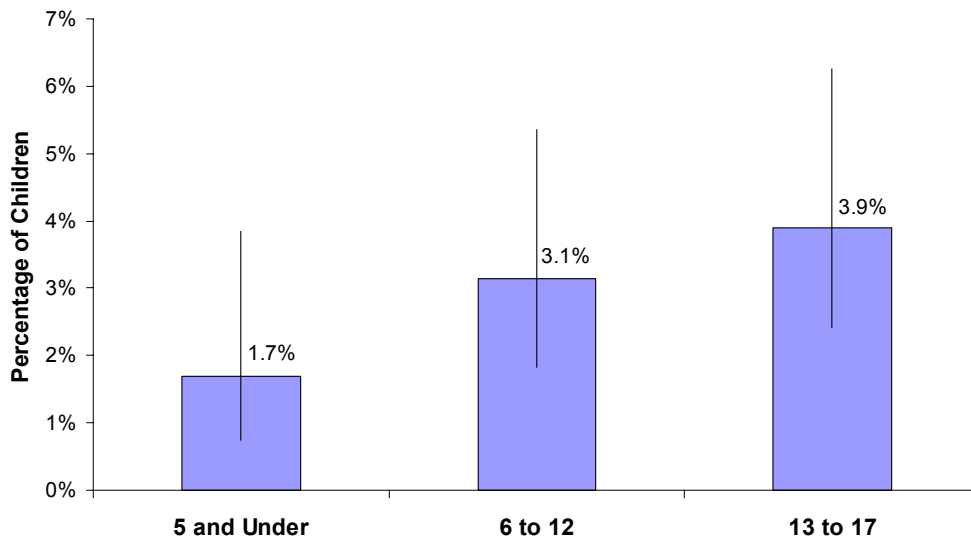


Figure 11.2 Percentage of Children Who Had Been Exposed to Cigarette Smoke Inside the Home by Age Group, Utah Children Aged 17 and Under, 2005



- In 2005, 2.8% of children had been exposed to cigarette smoke in the home. Overall there has been a 53.0% decline in cigarette smoke exposure in the home for children from 2001 to 2005.
- Some of this decrease is probably due to anti-tobacco campaigns such as those organized by the Utah Department of Health Tobacco Prevention and Control Program.



**Table 11. Exposure to Cigarette Smoke: Percentage of Children Who Had Been Exposed to Cigarette Smoke Inside the Home Utah Children Aged 17 or Less, 2005**

Demographic Subgroup	Utah Population Distribution		Survey Estimates of Children Who Had Been Exposed to Cigarette Smoke Inside the Home				
	Percentage Distribution	Number of Children <sup>1</sup>	Percentage of Children <sup>2</sup>			Number of Children <sup>3,4</sup>	Percentage Distribution of Children Exposed to Cigarette Smoke by Category <sup>4</sup>
			95% Confidence Bounds				
			Lower	Upper			
2005 Utah Population, Aged 17 and Under	100.0%	788,452	2.8%	1.9%	4.2%	22,100	100.0%
Age Group							
5 and Under	37.7%	297,212	1.7%	0.7%	3.8%	5,000	22.8%
6 to 12	37.0%	291,362	3.1%	1.8%	5.4%	9,100	41.6%
13 to 17	25.4%	199,878	3.9%	2.4%	6.3%	7,800	35.6%
Total, All Utahns Aged 17 and Under	100.0%	788,452	2.8%	1.9%	4.2%	22,100	100.0%
Local Health District <sup>5</sup>							
Bear River	6.1%	47,995	***	***	***	***	***
Central	2.8%	21,797	***	***	***	***	***
Davis	11.4%	90,191	***	***	***	***	***
Salt Lake	36.9%	290,593	4.1%	2.1%	7.7%	11,800	53.6%
Southeastern	1.9%	15,228	6.8%	3.0%	14.8%	1,000	4.5%
Southwest	6.6%	51,768	***	***	***	***	***
Summit	1.3%	9,870	***	***	***	***	***
Tooele	2.2%	17,443	3.9%	1.6%	9.6%	700	3.2%
TriCounty	1.7%	13,356	12.7%	7.1%	21.5%	1,700	7.7%
Utah County	19.9%	156,733	***	***	***	***	***
Wasatch	0.8%	6,419	***	***	***	***	***
Weber-Morgan	8.5%	67,059	5.3%	1.8%	14.5%	3,600	16.4%
Total, All Utahns Aged 17 and Under	100.0%	788,452	2.8%	1.9%	4.2%	22,100	100.0%
Health Insurance Coverage							
Insured	91.5%	721,200	2.7%	1.7%	4.3%	19,500	88.2%
Uninsured	8.5%	67,200	3.8%	1.5%	9.1%	2,600	11.8%
Total, All Utahns Aged 17 and Under	100.0%	788,500	2.8%	1.9%	4.2%	22,100	100.0%
Annual Household Income							
Under \$20,000	7.2%	57,100	15.2%	7.3%	28.9%	8,700	38.5%
\$20,000 to <\$45,000	26.8%	211,000	2.5%	1.1%	5.6%	5,300	23.5%
\$45,000 to <\$65,000	25.2%	198,600	1.9%	0.8%	4.4%	3,800	16.8%
\$65,000 and Over	40.8%	321,800	1.5%	0.5%	4.2%	4,800	21.2%
Total, All Utahns Aged 17 and Under	100.0%	788,500	2.8%	1.9%	4.2%	22,100	100.0%
Poverty Status							
<100% Federal Poverty Level	11.9%	93,900	6.5%	2.7%	14.5%	6,100	27.0%
101-200% Federal Poverty Level	26.1%	205,500	2.5%	1.1%	5.7%	5,100	22.6%
201-300% Federal Poverty Level	47.1%	371,000	2.8%	1.4%	5.4%	10,300	45.6%
>300% Federal Poverty Level	15.0%	118,000	0.9%	0.3%	3.1%	1,100	4.9%
Total, All Utahns Aged 17 and Under	100.0%	788,500	2.8%	1.9%	4.2%	22,100	100.0%
Hispanic or Latino Ethnicity							
Hispanic or Latino	13.6%	107,400	5.3%	2.1%	12.6%	5,700	29.2%
Not Hispanic or Latino	86.4%	681,100	2.0%	1.3%	3.2%	13,800	70.8%
Total, All Utahns Aged 17 and Under	100.0%	788,500	2.8%	1.9%	4.2%	22,100	100.0%

See footnotes at end of table.



**Table 11 (continued). Exposure to Cigarette Smoke: Percentage of Children Who Had Been Exposed to Cigarette Smoke Inside the Home Utah Children Aged 17 or Less, 2005**

Demographic Subgroup	Utah Population Distribution		Survey Estimates of Children Who Had Been Exposed to Cigarette Smoke Inside the Home				
	Percentage Distribution	Number of Children <sup>1</sup>	Percentage of Children <sup>2</sup>			Number of Children <sup>3,4</sup>	Percentage Distribution of Children Exposed to Cigarette Smoke by Category <sup>4</sup>
			95% Confidence Bounds				
			Lower	Upper			
<b>Asthma</b>							
Under Medical Care for Asthma	8.2%	64,300	4.3%	1.9%	9.7%	2,800	12.7%
Not Under Medical Care for Asthma	91.8%	724,100	2.7%	1.7%	4.0%	19,300	87.3%
Total, All Utahns Aged 17 and Under	100.0%	788,500	2.8%	1.9%	4.2%	22,100	100.0%

1 Population estimates of age groups and local health district based on 2005 baseline projections, Governor's Office of Planning and Budget, REMI model system; all others based on the 2005 UHSS and rounded to the nearest 100 persons.

2 Asymmetric confidence bounds were calculated using the logit transformation.

3 Rounded to the nearest 100 persons.

4 Figures in these columns may not sum to the total because of missing values on the grouping variables.

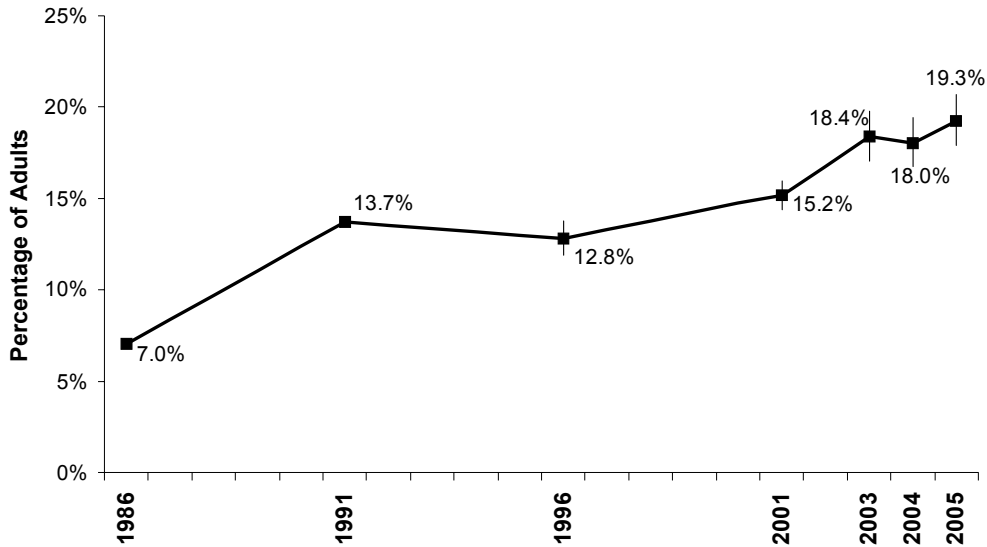
5 These rates have not been age-adjusted. Age-adjusted rates are available upon request.

\*\*\* Insufficient sample size for calculation of population estimates.

- For Utah children who were exposed to cigarette smoke in the home, the prevalence increased with age. Those aged 13 to 17 had the highest rate (3.9%) compared to other age groups.
- In the TriCounty health district 12.7% of children had been exposed to cigarette smoke in the home. This was the highest rate amongst all local health districts in Utah with enough cases to report.
- Household income and poverty status were both negatively associated with cigarette smoke exposure. Among Utah children living in households with incomes under \$20,000 or less than 100% poverty 15.2% and 6.5% were exposed to cigarette smoke (respectively).
- Hispanic children were significantly more likely than non-Hispanic children to be exposed to cigarette smoke in the home (5.3% and 2.0%, respectively).
- Of all children exposed to cigarette smoke in the home, 12.7% had been diagnosed with asthma, compared with 8.2% of all children statewide.

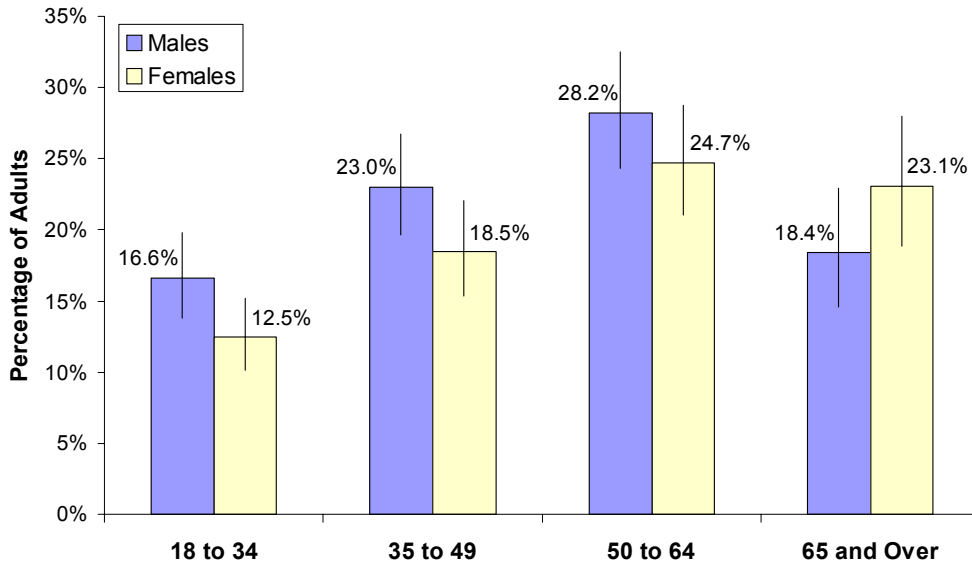


Figure 12.1 Percentage of Adults Who Were Obese, Utah Adults Aged 18 and Over, Utah, 1986, 1991, 1996, 2001, and 2003-2005



Note: Obesity was defined as a BMI of >30 or more. BMI is calculated by dividing weight in kilograms by the square of height in meters. For example, a male or female who is 5'8" is considered obese if he or she weighs 197.5 or more pounds.

Figure 12.2 Percentage of Adults Who Were Obese by Age and Sex, Utah Adults Aged 18 and Over, 2005



Note: Obesity was defined as a BMI of >30 or more. BMI is calculated by dividing weight in kilograms by the square of height in meters. For example, a male or female who is 5'8" is considered obese if he or she weighs 197.5 or more pounds.

- In 2005, 19.3% of adult Utahns (aged 18 and over) were obese. This represents an estimated 335,300 persons.



**Table 12. Obesity: Percentage of Adults Who Were Obese**  
by Selected Demographic Characteristics, Utah Residents Aged 18 and Over, 2005

Demographic Subgroup	Utah Population Distribution		Survey Estimates of Utah Adults Who Were Obese				
	Percentage Distribution	Number of Adults <sup>1</sup>	Percentage of Adults <sup>2</sup>			Number of Adults <sup>3,4</sup>	Percentage Distribution of Adults Who Were Obese by Subgroup <sup>4</sup>
			95% Confidence Bounds				
			Lower	Upper			
2005 Utah Population, Adults Aged 18+	100.0%	1,740,474	19.3%	17.9%	20.7%	335,300	100.0%
<b>Sex</b>							
Male	50.0%	871,102	20.7%	18.8%	22.7%	180,200	53.8%
Female	50.0%	869,372	17.8%	16.1%	19.5%	154,500	46.2%
Total, All Utahns Aged 18+	100.0%	1,740,474	19.3%	17.9%	20.7%	335,300	100.0%
<b>Age Group</b>							
18 to 34	42.4%	737,965	14.6%	12.7%	16.8%	107,800	32.2%
35 to 49	26.8%	465,964	20.9%	18.4%	23.6%	97,300	29.0%
50 to 64	18.6%	323,963	26.5%	23.7%	29.5%	85,800	25.6%
65 and Over	12.2%	212,582	20.9%	17.9%	24.2%	44,400	13.2%
Total, All Utahns Aged 18+	100.0%	1,740,474	19.3%	17.9%	20.7%	335,300	100.0%
<b>Sex and Age</b>							
Males, 18 to 34	21.6%	376,364	16.6%	13.8%	19.8%	62,500	18.7%
Males, 35 to 49	13.7%	237,941	23.0%	19.7%	26.8%	54,800	16.4%
Males 50 to 64	9.3%	161,253	28.2%	24.3%	32.5%	45,500	13.6%
Males, 65 and Over	5.5%	95,544	18.4%	14.5%	22.9%	17,500	5.2%
Females, 18 to 34	20.8%	361,601	12.5%	10.2%	15.2%	45,000	13.4%
Females, 35 to 49	13.1%	228,023	18.5%	15.4%	22.1%	42,200	12.6%
Females 50 to 64	9.3%	162,710	24.7%	21.1%	28.8%	40,200	12.0%
Females, 65 and Over	6.7%	117,038	23.1%	18.9%	28.0%	27,000	8.1%
Total, All Utahns Aged 18+	100.0%	1,740,474	19.3%	17.9%	20.7%	335,300	100.0%
<b>Local Health District<sup>5</sup></b>							
Bear River	5.8%	101,710	15.5%	11.8%	20.1%	15,800	4.7%
Central	2.8%	49,249	23.3%	18.8%	28.3%	11,500	3.4%
Davis	10.7%	186,183	20.8%	16.8%	25.5%	38,700	11.5%
Salt Lake	39.1%	680,155	18.8%	16.5%	21.4%	127,900	38.2%
Southeastern	2.2%	37,604	19.0%	15.2%	23.6%	7,200	2.1%
Southwest	7.5%	130,527	23.1%	18.7%	28.1%	30,100	9.0%
Summit	1.5%	26,547	10.1%	6.7%	14.8%	2,700	0.8%
Tooele	2.0%	34,392	21.6%	17.4%	26.5%	7,400	2.2%
TriCounty	1.7%	28,971	25.0%	20.0%	30.9%	7,200	2.1%
Utah County	17.1%	297,244	17.3%	14.3%	20.8%	51,400	15.3%
Wasatch	0.8%	13,719	17.0%	13.3%	21.3%	2,300	0.7%
Weber-Morgan	8.9%	154,173	21.3%	16.7%	26.9%	32,900	9.8%
Total, All Utahns Aged 18+	100.0%	1,740,474	19.3%	17.9%	20.7%	335,300	100.1%
<b>Health Insurance Coverage</b>							
Insured	87.0%	1,514,800	19.4%	18.0%	20.9%	294,100	87.0%
Uninsured	13.0%	225,600	19.5%	15.6%	24.0%	44,000	13.0%
Total, All Utahns Aged 18+	100.0%	1,740,500	19.3%	17.9%	20.7%	335,300	100.0%
<b>Annual Household Income</b>							
Under \$20,000	11.5%	200,000	18.1%	13.9%	23.3%	36,200	10.7%
\$20,000 to <\$45,000	27.8%	484,700	23.2%	20.4%	26.2%	112,400	33.2%
\$45,000 to <\$65,000	23.1%	402,000	18.9%	16.3%	21.8%	76,000	22.4%
\$65,000 and Over	37.6%	653,700	17.5%	15.2%	20.0%	114,300	33.7%
Total, All Utahns Aged 18+	100.0%	1,740,500	19.3%	17.9%	20.7%	335,300	100.0%

See footnotes at end of table.



**Table 12 (continued). Obesity: Percentage of Adults Who Were Obese by Selected Demographic Characteristics, Utah Residents Aged 18 and Over, 2005**

Demographic Subgroup	Utah Population Distribution		Survey Estimates of Utah Adults Who Were Obese				
	Percentage Distribution	Number of Adults <sup>1</sup>	Percentage of Adults <sup>2</sup>			Number of Adults <sup>3,4</sup>	Percentage Distribution of Adults Who Were Obese by Subgroup <sup>4</sup>
			95% Confidence Bounds				
			Lower	Upper			
<b>Poverty Status</b>							
<100% Federal Poverty Level	10.0%	173,300	16.0%	12.0%	20.9%	27,700	8.1%
101-200% Federal Poverty Level	20.2%	351,300	24.5%	20.9%	28.5%	86,100	25.2%
201-300% Federal Poverty Level	34.2%	594,400	18.6%	16.2%	21.2%	110,600	32.3%
>300% Federal Poverty Level	35.7%	621,500	19.0%	16.8%	21.4%	117,800	34.4%
Total, All Utahns Aged 18+	100.0%	1,740,500	19.3%	17.9%	20.7%	335,300	100.0%
<b>Education Level</b>							
Some High School	6.7%	117,300	25.6%	19.9%	32.3%	30,100	9.0%
High School Grad/Some College	53.9%	938,900	19.5%	17.7%	21.4%	183,000	54.6%
Technical/Vocational Degree	10.0%	174,000	22.4%	18.5%	26.9%	39,000	11.6%
4 Year College Degree or More	29.3%	510,300	16.3%	14.3%	18.5%	83,100	24.8%
Total, All Utahns Aged 18+	100.0%	1,740,500	19.3%	17.9%	20.7%	335,300	100.0%
<b>Employment Status</b>							
Full Time	50.5%	879,600	21.0%	19.2%	23.1%	185,000	55.0%
Part Time	16.8%	291,600	13.4%	10.7%	16.6%	38,900	11.6%
Retired	11.0%	192,000	21.4%	18.3%	25.0%	41,200	12.2%
Keeping House	11.5%	199,700	18.9%	15.5%	22.9%	37,700	11.2%
Full Time Student	3.1%	53,300	8.1%	4.0%	15.6%	4,300	1.3%
Unemployed/Other	7.1%	124,300	23.6%	19.0%	28.8%	29,300	8.7%
Total, All Utahns Aged 18+	100.0%	1,740,500	19.3%	17.9%	20.7%	335,300	100.0%
<b>Hispanic or Latino Ethnicity</b>							
Hispanic or Latino	9.5%	164,600	22.1%	16.4%	29.1%	36,400	10.9%
Not Hispanic or Latino	90.5%	1,575,900	18.9%	17.6%	20.3%	298,200	89.1%
Total, All Utahns Aged 18+	100.0%	1,740,500	19.3%	17.9%	20.7%	335,300	100.0%
<b>Marital Status</b>							
Married	69.5%	1,209,400	20.2%	18.7%	21.8%	244,200	72.9%
Never Married	19.2%	334,300	14.5%	11.6%	17.9%	48,400	14.5%
Divorced/Separated/Widowed	11.3%	196,700	21.5%	18.1%	25.3%	42,300	12.6%
Total, All Utahns Aged 18+	100.0%	1,740,500	19.3%	17.9%	20.7%	335,300	100.0%

1 Population estimates of sex, age groups, and local health district based on 2005 baseline projections, Governor's Office of Planning and Budget, REMI model system; all others based on the 2005 UHSS and rounded to the nearest 100 persons.

2 Asymmetric confidence bounds were calculated using the logit transformation.

3 Rounded to the nearest 100 persons.

4 Figures in these columns may not sum to the total because of data weighting and missing values on the grouping variables.

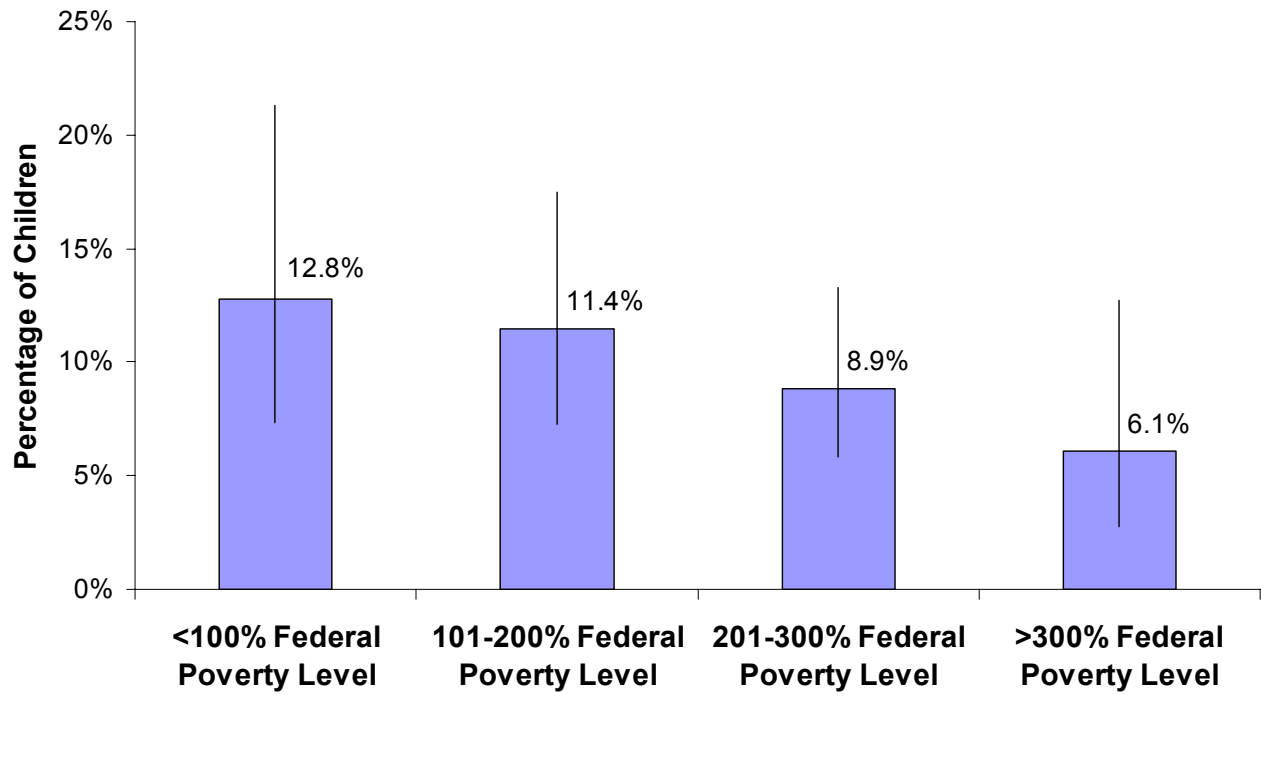
5 These rates have not been age-adjusted. Age-adjusted rates are available upon request.

Note: Obesity was defined as a BMI of 30 or more. BMI is calculated by dividing weight in kilograms by the square of height in meters. For example, a male or female who is 5'8" is considered obese if he or she weighs 197.5 or more pounds.

- The prevalence of obesity has been increasing steadily over the past twenty years. From 1986 (7.0%) to 2005 (19.3%), the prevalence of obesity in Utah adults increased by 175%.
- Males were significantly more likely to be obese than females (20.7% vs. 17.8% respectively).
- Males aged 50 to 64 were the most likely to be obese (28.2%) compared to other age and gender groups.



Figure 13.1 Percentage of Children Who Were Described as Slightly or Very Overweight by Poverty Status, Utah Children Aged 6 to 11, 2005



- The Utah Health Status Survey asked about weight for children aged 6 to 11 in 2005. Respondents were asked how they would describe the weight of the children in the household. Respondents reported that nearly ten percent of these children (9.6%) were either slightly or very overweight.
- Females aged 6 to 11 were more likely to be reported as overweight than males (10.5% vs. 8.7%).
- Uninsured children (aged 6 to 11) were more likely to be reported as overweight than insured children (14.0% vs. 9.4%).
- Children living in poverty were more likely than other children to be reported as overweight.
- Hispanic or Latino children were significantly more likely than non-Hispanic children (aged 6 to 11) to be reported as overweight.



**Table 13. Obesity: Percentage of Children Who Were Described as Slightly or Very Overweight by Selected Demographic Characteristics, Utah Children Aged 6 to 11, 2005**

Demographic Subgroup	Utah Population Distribution		Survey Estimates of Utah Children Who Were Overweight				
	Percentage Distribution	Number of Children <sup>1</sup>	Percentage of Children <sup>2</sup>			Number of Children <sup>3,4</sup>	Percentage Distribution of Children Who Were Overweight by Subgroup <sup>4</sup>
			95% Confidence Bounds				
			Lower	Upper			
2005 Utah Population, Aged 6 to 11	100.0%	251,712	9.6%	7.5%	12.2%	24,100	100.0%
<b>Sex</b>							
Male	51.4%	129,459	8.7%	6.2%	12.1%	11,200	46.7%
Female	48.6%	122,253	10.5%	7.5%	14.6%	12,800	53.3%
Total, All Utah Children Aged 6 to 11	100.0%	251,712	9.6%	7.5%	12.2%	24,100	100.0%
<b>Local Health District<sup>5</sup></b>							
Bear River	6.0%	15,085	8.1%	3.3%	18.3%	1,200	5.0%
Central	2.8%	7,169	13.9%	7.6%	23.9%	1,000	4.1%
Davis	11.6%	29,211	9.5%	4.3%	19.7%	2,800	11.6%
Salt Lake	37.0%	93,189	7.7%	4.3%	13.4%	7,200	29.8%
Southeastern	1.9%	4,868	14.3%	7.0%	26.9%	700	2.9%
Southwest	6.4%	16,203	15.5%	7.1%	30.5%	2,500	10.3%
Summit	1.2%	3,103	10.2%	4.3%	22.3%	300	1.2%
Tooele	2.4%	5,926	8.3%	3.7%	17.7%	500	2.1%
TriCounty	1.6%	4,079	15.9%	8.9%	26.8%	600	2.5%
Utah County	19.5%	49,180	8.6%	5.0%	14.2%	4,200	17.4%
Wasatch	0.8%	2,006	8.2%	3.5%	17.9%	200	0.8%
Weber-Morgan	8.6%	21,693	13.9%	7.4%	24.6%	3,000	12.4%
Total, All Utah Children Aged 6 to 11	100.0%	251,712	9.6%	7.5%	12.2%	24,100	100.0%
<b>Health Insurance Coverage</b>							
Insured	90.2%	227,000	9.4%	7.2%	12.2%	21,300	85.9%
Uninsured	9.8%	24,800	14.0%	7.0%	26.0%	3,500	14.1%
Total, All Utah Children Aged 6 to 11	100.0%	251,700	9.6%	7.5%	12.2%	24,100	100.0%
<b>Annual Household Income</b>							
Under \$20,000	5.5%	13,800	21.3%	11.1%	37.2%	2,900	11.9%
\$20,000 to <\$45,000	25.4%	63,900	9.3%	5.4%	15.6%	6,000	24.6%
\$45,000 to <\$65,000	27.5%	69,200	11.6%	7.8%	17.0%	8,000	32.8%
\$65,000 and Over	41.7%	104,900	7.2%	4.2%	12.1%	7,500	30.7%
Total, All Utah Children Aged 6 to 11	100.0%	251,700	9.6%	7.5%	12.2%	24,100	100.0%
<b>Poverty Status</b>							
<100% Federal Poverty Level	10.9%	27,400	12.8%	7.4%	21.3%	3,500	14.4%
101-200% Federal Poverty Level	27.7%	69,700	11.4%	7.3%	17.5%	8,000	32.9%
201-300% Federal Poverty Level	48.8%	122,800	8.9%	5.8%	13.3%	10,900	44.9%
>300% Federal Poverty Level	12.6%	31,800	6.1%	2.8%	12.7%	1,900	7.8%
Total, All Utah Children Aged 6 to 11	100.0%	251,700	9.6%	7.5%	12.2%	24,100	100.0%
<b>Hispanic or Latino Ethnicity</b>							
Hispanic or Latino	13.1%	33,100	18.4%	10.1%	31.3%	6,100	27.1%
Not Hispanic or Latino	86.9%	218,700	7.5%	5.8%	9.8%	16,400	72.9%
Total, All Utah Children Aged 6 to 11	100.0%	251,700	9.6%	7.5%	12.2%	24,100	100.0%

1 Population estimates of sex, age group, and local health district based on 2005 baseline projections, Governor's Office of Planning and Budget, REMI model system; all others based on the 2005 UHSS and rounded to the nearest 100 persons.

2 Asymmetric confidence bounds were calculated using the logit transformation.

3 Rounded to the nearest 100 persons.

4 Figures in these columns may not sum to the total because of data weighting and missing values on the grouping variables.

5 These rates have not been age-adjusted. Age-adjusted rates are available upon request.