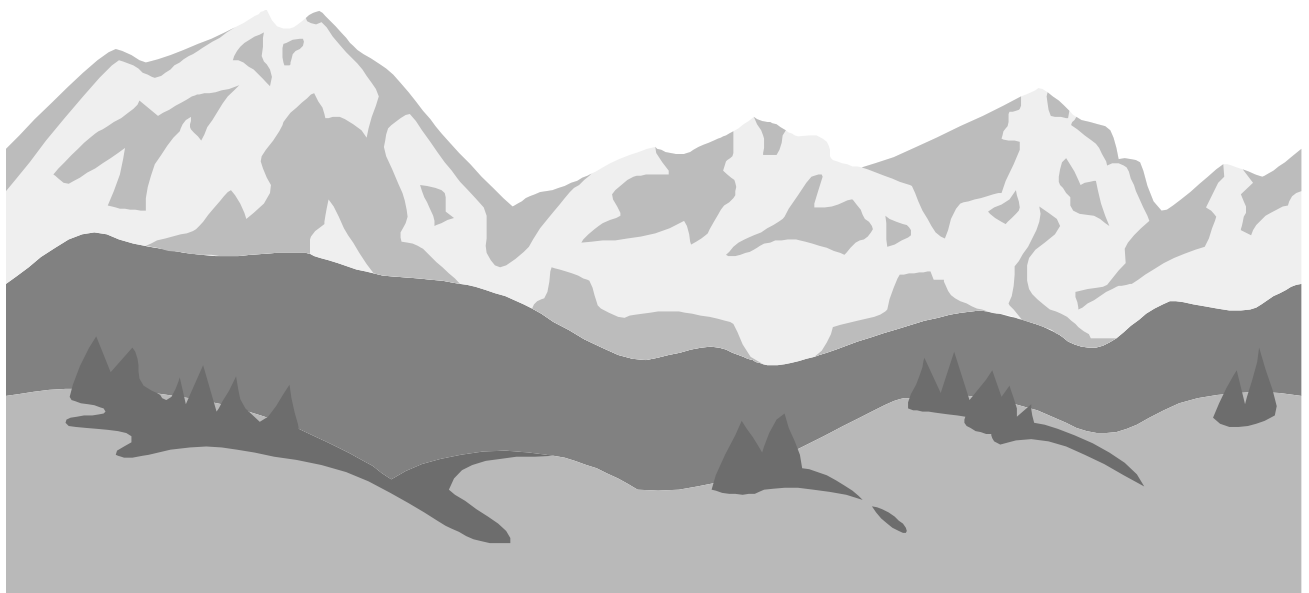


Appendix C: Local Health District and State Demographic Profiles





Bear River Health District

Counties:

Box Elder

Cache

Rich

Population Estimates by Selected Demographic Characteristics
Utah Adults Ages 18 or Over, 2000

Bear River	Number in Each Category	Percentage of Population
Sex		
Male	44,827	48.8%
Female	46,990	51.2%
Total	91,817	100.0%
Age		
18-34	43,661	47.6%
35-49	23,585	25.7%
50-64	13,265	14.4%
65 or Over	11,306	12.3%
Total	91,817	100.0%
Race		
<i>Only One Race Selected</i>		
White	85,632	93.3%
Black	269	0.3%
American Indian	556	0.6%
Asian	1,749	1.9%
Pacific Islander	148	0.2%
Some Other Race	2,645	2.9%
<i>Two or More Races</i>	819	0.9%
Total	91,817	100.0%
Hispanic Origin		
Hispanic	5,101	5.6%
Non-Hispanic	86,716	94.4%
Total	91,817	100.0%

Source: Estimates for the average population counts for age, sex, and total population were provided by the Governor's Office of Planning and Budget. Estimates for the population distribution by race and Hispanic origin were estimated by the U.S. Census Bureau Data Set: Census 2000 Summary File 1 (SF 1) 100-Percent Data Table P12.



Bear River Health District (cont'd)

Population Estimates by Selected Demographic Characteristics
Utah Adults Ages 18 or Over, 1999-2001

Bear River	Number in Each Category	Percentage of Population	95% Confidence Intervals	
			Lower	Upper
<i>Income</i>				
Less Than \$20,000	14,654	16.0%	12.5%	19.4%
\$20,000-\$49,999	47,644	51.9%	47.1%	56.7%
\$50,000 or Over	29,528	32.2%	27.7%	36.6%
Total	91,817	100.0%		
<i>Education</i>				
Less Than High School	2,525	2.8%	1.7%	4.4%
H.S. Grad or G.E.D.	26,333	28.7%	24.6%	32.8%
Some Post High School	36,966	40.3%	35.8%	44.7%
College Graduate	25,993	28.3%	24.4%	32.3%
Total	91,817	100.0%		
<i>Employment Status</i>				
Employed	60,875	66.3%	62.3%	70.4%
Unemployed	4,049	4.4%	2.9%	6.7%
Homemaker	10,816	11.8%	9.0%	14.6%
Student	5,188	5.7%	3.5%	7.8%
Retired	10,880	11.9%	9.2%	14.5%
Total	91,817	100.0%		
<i>Marital Status</i>				
Married	67,834	73.9%	69.9%	77.9%
Divorced	5,693	6.2%	4.2%	8.2%
Widowed	3,544	3.9%	2.7%	5.4%
Separated	1,093	1.2%	0.6%	2.4%
Never Married	12,955	14.1%	10.6%	17.6%
Living as Married	707	0.8%	0.3%	1.9%
Total	91,817	100.0%		

Source: Estimates for the population distribution for income, education, employment status, and marital status were derived from the BRFSS surveys from 1999-2001. Estimates for the average population count from 1999-2001 were provided by the Governor's Office of Planning and Budget.



Central Utah Health District

Counties:

Juab
 Millard
 Piute
 Sanpete
 Sevier
 Wayne

Population Estimates by Selected Demographic Characteristics
 Utah Adults Ages 18 or Over, 2000

Central	Number in Each Category	Percentage of Population
Sex		
Male	21,606	49.9%
Female	21,680	50.1%
Total	43,286	100.0%
Age		
18-34	14,638	33.8%
35-49	12,204	28.2%
50-64	8,574	19.8%
65 or Over	7,870	18.2%
Total	43,286	100.0%
Race		
<i>Only One Race Selected</i>		
White	41,178	95.1%
Black	93	0.2%
American Indian	479	1.1%
Asian	178	0.4%
Pacific Islander	74	0.2%
Some Other Race	886	2.0%
<i>Two or More Races</i>	397	0.9%
Total	43,286	100.0%
Hispanic Origin		
Hispanic	1,871	4.3%
Non-Hispanic	41,415	95.7%
Total	43,286	100.0%

Source: Estimates for the average population counts for age, sex, and total population were provided by the Governor's Office of Planning and Budget. Estimates for the population distribution by race and Hispanic origin were estimated by the U.S. Census Bureau Data Set: Census 2000 Summary File 1 (SF 1) 100-Percent Data Table P12.



Central Utah Health District (cont'd)

Population Estimates by Selected Demographic Characteristics
Utah Adults Ages 18 or Over, 1999-2001

Central	Number in Each Category	Percentage of Population	95% Confidence Intervals	
			Lower	Upper
<i>Income</i>				
Less Than \$20,000	10,964	25.3%	21.1%	29.6%
\$20,000-\$49,999	22,413	51.8%	47.0%	56.6%
\$50,000 or Over	9,908	22.9%	18.9%	26.9%
Total	43,286	100.0%		
<i>Education</i>				
Less Than High School	2,653	6.1%	4.0%	8.2%
H.S. Grad or G.E.D.	15,877	36.7%	32.3%	41.1%
Some Post High School	15,605	36.1%	31.8%	40.3%
College Graduate	9,151	21.1%	17.3%	25.0%
Total	43,286	100.0%		
<i>Employment Status</i>				
Employed	26,331	60.8%	56.5%	65.2%
Unemployed	2,203	5.1%	3.3%	6.9%
Homemaker	6,203	14.3%	11.4%	17.3%
Student	1,519	3.5%	2.0%	6.4%
Retired	7,025	16.2%	13.0%	19.5%
Total	43,286	100.0%		
<i>Marital Status</i>				
Married	31,616	73.0%	68.9%	77.2%
Divorced	2,576	6.0%	4.3%	7.7%
Widowed	2,671	6.2%	4.5%	7.9%
Separated	255	0.6%	0.3%	1.3%
Never Married	5,277	12.2%	8.6%	15.8%
Living as Married	892	2.1%	0.9%	4.8%
Total	43,286	100.0%		

Source: Estimates for the population distribution for income, education, employment status, and marital status were derived from the BRFSS surveys from 1999-2001. Estimates for the average population count from 1999-2001 were provided by the Governor's Office of Planning and Budget.



Davis County Health District

Counties:

Davis

Population Estimates by Selected Demographic Characteristics
Utah Adults Ages 18 or Over, 2000

Davis	Number in Each Category	Percentage of Population
Sex		
Male	77,323	49.6%
Female	78,493	50.4%
Total	155,816	100.0%
Age		
18-34	62,857	40.3%
35-49	48,829	31.3%
50-64	26,501	17.0%
65 or Over	17,629	11.3%
Total	155,816	100.0%
Race		
<i>Only One Race Selected</i>		
White	144,572	92.8%
Black	1,734	1.1%
American Indian	896	0.6%
Asian	2,766	1.8%
Pacific Islander	378	0.2%
Some Other Race	3,513	2.3%
<i>Two or More Races</i>	1,958	1.3%
Total	155,816	100.0%
Hispanic Origin		
Hispanic	8,144	5.2%
Non-Hispanic	147,672	94.8%
Total	155,816	100.0%

Source: Estimates for the average population counts for age, sex, and total population were provided by the Governor's Office of Planning and Budget. Estimates for the population distribution by race and Hispanic origin were estimated by the U.S. Census Bureau Data Set: Census 2000 Summary File 1 (SF 1) 100-Percent Data Table P12.



Davis County Health District (cont'd)

Population Estimates by Selected Demographic Characteristics
Utah Adults Ages 18 or Over, 1999-2001

Davis	Number in Each Category	Percentage of Population	95% Confidence Intervals	
			Lower	Upper
Income				
Less Than \$20,000	10,440	6.7%	4.5%	8.9%
\$20,000-\$49,999	71,099	45.6%	40.8%	50.5%
\$50,000 or Over	74,277	47.7%	42.8%	52.6%
Total	155,816	100.0%		
Education				
Less Than High School	5,017	3.2%	1.9%	5.5%
H.S. Grad or G.E.D.	41,650	26.7%	22.7%	30.8%
Some Post High School	59,724	38.3%	33.7%	42.9%
College Graduate	49,425	31.7%	27.3%	36.1%
Total	155,816	100.0%		
Employment Status				
Employed	108,136	69.4%	65.1%	73.7%
Unemployed	4,737	3.0%	1.8%	5.1%
Homemaker	20,131	12.9%	9.8%	16.0%
Student	6,030	3.9%	2.3%	6.6%
Retired	16,766	10.8%	8.0%	13.5%
Total	155,816	100.0%		
Marital Status				
Married	117,470	75.4%	71.4%	79.4%
Divorced	13,681	8.8%	6.3%	11.3%
Widowed	4,051	2.6%	1.6%	4.2%
Separated	639	0.4%	0.2%	1.1%
Never Married	18,184	11.7%	8.6%	14.8%
Living as Married	1,792	1.2%	0.5%	2.8%
Total	155,816	100.0%		

Source: Estimates for the population distribution for income, education, employment status, and marital status were derived from the BRFSS surveys from 1999-2001. Estimates for the average population count from 1999-2001 were provided by the Governor's Office of Planning and Budget.



Salt Lake Valley Health District

Counties:

Salt Lake

Population Estimates by Selected Demographic Characteristics
Utah Adults Ages 18 or Over, 2000

Salt Lake	Number in Each Category	Percentage of Population
Sex		
Male	313,470	49.9%
Female	314,387	50.1%
Total	627,857	100.0%
Age		
18-34	261,552	41.7%
35-49	188,770	30.1%
50-64	104,499	16.6%
65 or Over	73,036	11.6%
Total	627,857	100.0%
Race		
<i>Only One Race Selected</i>		
White	550,463	87.7%
Black	6,208	1.0%
American Indian	5,202	0.8%
Asian	17,191	2.7%
Pacific Islander	6,197	1.0%
Some Other Race	31,052	4.9%
<i>Two or More Races</i>	11,544	1.8%
Total	627,857	100.0%
Hispanic Origin		
Hispanic	71,749	11.4%
Non-Hispanic	556,108	88.6%
Total	627,857	100.0%

Source: Estimates for the average population counts for age, sex, and total population were provided by the Governor's Office of Planning and Budget. Estimates for the population distribution by race and Hispanic origin were estimated by the U.S. Census Bureau Data Set: Census 2000 Summary File 1 (SF 1) 100-Percent Data Table P12.



Salt Lake Valley Health District (cont'd)

Population Estimates by Selected Demographic Characteristics
Utah Adults Ages 18 or Over, 1999-2001

Salt Lake	Number in Each Category	Percentage of Population	95% Confidence Intervals	
			Lower	Upper
<i>Income</i>				
Less Than \$20,000	75,029	12.0%	10.6%	13.3%
\$20,000-\$49,999	290,949	46.3%	44.1%	48.6%
\$50,000 or Over	261,879	41.7%	39.5%	44.0%
Total	627,857	100.0%		
<i>Education</i>				
Less Than High School	39,178	6.2%	5.1%	7.3%
H.S. Grad or G.E.D.	189,864	30.2%	28.3%	32.2%
Some Post High School	200,098	31.9%	29.9%	33.9%
College Graduate	198,717	31.7%	29.7%	33.6%
Total	627,857	100.0%		
<i>Employment Status</i>				
Employed	436,047	69.5%	67.5%	71.4%
Unemployed	36,730	5.9%	4.9%	6.9%
Homemaker	62,221	9.9%	8.7%	11.1%
Student	17,768	2.8%	2.2%	3.7%
Retired	75,092	12.0%	10.6%	13.4%
Total	627,857	100.0%		
<i>Marital Status</i>				
Married	414,951	66.1%	64.1%	68.1%
Divorced	56,821	9.1%	8.0%	10.1%
Widowed	33,276	5.3%	4.5%	6.1%
Separated	10,171	1.6%	1.2%	2.2%
Never Married	96,690	15.4%	13.9%	17.0%
Living as Married	15,948	2.5%	2.0%	3.3%
Total	627,857	100.0%		

Source: Estimates for the population distribution for income, education, employment status, and marital status were derived from the BRFSS surveys from 1999-2001. Estimates for the average population count from 1999-2001 were provided by the Governor's Office of Planning and Budget.



Southeastern Utah Health District

Counties:

Carbon
Emery
Grand
San Juan

Population Estimates by Selected Demographic Characteristics
Utah Adults Ages 18 or Over, 2000

Southeastern	Number in Each Category	Percentage of Population
Sex		
Male	17,728	48.6%
Female	18,723	51.4%
Total	36,451	100.0%
Age		
18-34	11,649	32.0%
35-49	11,374	31.2%
50-64	7,364	20.2%
65 or Over	6,064	16.6%
Total	36,451	100.0%
Race		
<i>Only One Race Selected</i>		
White	29,814	81.8%
Black	66	0.2%
American Indian	4,885	13.4%
Asian	113	0.3%
Pacific Islander	15	0.0%
Some Other Race	1,028	2.8%
<i>Two or More Races</i>	530	1.5%
Total	36,451	100.0%
Hispanic Origin		
Hispanic	2,656	7.3%
Non-Hispanic	33,795	92.7%
Total	36,451	100.0%

Source: Estimates for the average population counts for age, sex, and total population were provided by the Governor's Office of Planning and Budget. Estimates for the population distribution by race and Hispanic origin were estimated by the U.S. Census Bureau Data Set: Census 2000 Summary File 1 (SF 1) 100-Percent Data Table P12.



Southeastern Utah Health District (cont'd)

Population Estimates by Selected Demographic Characteristics
Utah Adults Ages 18 or Over, 1999-2001

Southeastern	Number in Each Category	Percentage of Population	95% Confidence Intervals	
			Lower	Upper
<i>Income</i>				
Less Than \$20,000	7,768	21.3%	17.5%	25.2%
\$20,000-\$49,999	19,592	53.8%	48.9%	58.6%
\$50,000 or Over	9,091	24.9%	20.5%	29.4%
Total	36,451	100.0%		
<i>Education</i>				
Less Than High School	4,013	11.0%	8.2%	13.8%
H.S. Grad or G.E.D.	13,906	38.2%	33.6%	42.7%
Some Post High School	11,584	31.8%	27.6%	35.9%
College Graduate	6,948	19.1%	15.1%	23.0%
Total	36,451	100.0%		
<i>Employment Status</i>				
Employed	22,829	62.6%	58.1%	67.1%
Unemployed	3,004	8.2%	5.8%	10.7%
Homemaker	4,144	11.4%	8.3%	14.4%
Student	981	2.7%	1.5%	4.7%
Retired	5,493	15.1%	11.9%	18.2%
Total	36,451	100.0%		
<i>Marital Status</i>				
Married	24,645	67.6%	63.5%	71.7%
Divorced	4,006	11.0%	8.3%	13.7%
Widowed	2,209	6.1%	4.2%	7.9%
Separated	485	1.3%	0.7%	2.6%
Never Married	4,640	12.7%	9.7%	15.8%
Living as Married	467	1.3%	0.7%	2.4%
Total	36,451	100.0%		

Source: Estimates for the population distribution for income, education, employment status, and marital status were derived from the BRFSS surveys from 1999-2001. Estimates for the average population count from 1999-2001 were provided by the Governor's Office of Planning and Budget.



Southwest Utah Health District

Counties:

Beaver
Garfield
Iron
Kane
Washington

Population Estimates by Selected Demographic Characteristics
Utah Adults Ages 18 or Over, 2000

Southwest	Number in Each Category	Percentage of Population
Sex		
Male	47,514	48.7%
Female	50,081	51.3%
Total	97,595	100.0%
Age		
18-34	35,219	36.1%
35-49	23,568	24.1%
50-64	17,904	18.3%
65 or Over	20,904	21.4%
Total	97,595	100.0%
Race		
<i>Only One Race Selected</i>		
White	92,251	94.5%
Black	221	0.2%
American Indian	1,321	1.4%
Asian	582	0.6%
Pacific Islander	347	0.4%
Some Other Race	1,807	1.9%
<i>Two or More Races</i>	1,066	1.1%
Total	97,595	100.0%
Hispanic Origin		
Hispanic	4,154	4.3%
Non-Hispanic	93,441	95.7%
Total	97,595	100.0%

Source: Estimates for the average population counts for age, sex, and total population were provided by the Governor's Office of Planning and Budget. Estimates for the population distribution by race and Hispanic origin were estimated by the U.S. Census Bureau Data Set: Census 2000 Summary File 1 (SF 1) 100-Percent Data Table P12.



Southwest Utah Health District (cont'd)

Population Estimates by Selected Demographic Characteristics
Utah Adults Ages 18 or Over, 1999-2001

Southwest	Number in Each Category	Percentage of Population	95% Confidence Intervals	
			Lower	Upper
<i>Income</i>				
Less Than \$20,000	21,852	22.4%	18.1%	26.7%
\$20,000-\$49,999	51,228	52.5%	47.8%	57.2%
\$50,000 or Over	24,516	25.1%	21.1%	29.1%
Total	97,595	100.0%		
<i>Education</i>				
Less Than High School	6,890	7.1%	4.9%	9.2%
H.S. Grad or G.E.D.	31,094	31.9%	27.8%	35.9%
Some Post High School	36,686	37.6%	33.3%	41.9%
College Graduate	22,935	23.5%	19.9%	27.1%
Total	97,595	100.0%		
<i>Employment Status</i>				
Employed	56,332	57.7%	53.5%	61.9%
Unemployed	5,387	5.5%	3.6%	7.4%
Homemaker	9,750	10.0%	7.5%	12.5%
Student	4,646	4.8%	3.2%	7.0%
Retired	21,481	22.0%	18.6%	25.4%
Total	97,595	100.0%		
<i>Marital Status</i>				
Married	68,375	70.1%	66.0%	74.1%
Divorced	6,305	6.5%	4.7%	8.2%
Widowed	6,217	6.4%	4.7%	8.1%
Separated	1,035	1.1%	0.5%	2.4%
Never Married	14,395	14.8%	11.2%	18.3%
Living as Married	1,278	1.3%	0.6%	2.8%
Total	97,595	100.0%		

Source: Estimates for the population distribution for income, education, employment status, and marital status were derived from the BRFSS surveys from 1999-2001. Estimates for the average population count from 1999-2001 were provided by the Governor's Office of Planning and Budget.



Summit County Health District

Counties:

Summit

Population Estimates by Selected Demographic Characteristics
Utah Adults Ages 18 or Over, 2000

Summit	Number in Each Category	Percentage of Population
Sex		
Male	10,967	52.0%
Female	10,125	48.0%
Total	21,092	100.0%
Age		
18-34	6,864	32.5%
35-49	8,540	40.5%
50-64	4,227	20.0%
65 or Over	1,461	6.9%
Total	21,092	100.0%
Race		
<i>Only One Race Selected</i>		
White	19,456	92.2%
Black	38	0.2%
American Indian	66	0.3%
Asian	227	1.1%
Pacific Islander	9	0.0%
Some Other Race	1,100	5.2%
<i>Two or More Races</i>	195	0.9%
Total	21,092	100.0%
Hispanic Origin		
Hispanic	1,647	7.8%
Non-Hispanic	19,445	92.2%
Total	21,092	100.0%

Source: Estimates for the average population counts for age, sex, and total population were provided by the Governor's Office of Planning and Budget. Estimates for the population distribution by race and Hispanic origin were estimated by the U.S. Census Bureau Data Set: Census 2000 Summary File 1 (SF 1) 100-Percent Data Table P12.



Summit County Health District (cont'd)

Population Estimates by Selected Demographic Characteristics
Utah Adults Ages 18 or Over, 1999-2001

Summit	Number in Each Category	Percentage of Population	95% Confidence Intervals	
			Lower	Upper
<i>Income</i>				
Less Than \$20,000	1,036	4.9%	3.3%	7.4%
\$20,000-\$49,999	7,869	37.3%	31.6%	43.0%
\$50,000 or Over	12,187	57.8%	52.0%	63.6%
Total	21,092	100.0%		
<i>Education</i>				
Less Than High School	930	4.4%	2.8%	7.0%
H.S. Grad or G.E.D.	4,891	23.2%	18.8%	27.6%
Some Post High School	5,807	27.5%	22.0%	33.0%
College Graduate	9,464	44.9%	39.7%	50.1%
Total	21,092	100.0%		
<i>Employment Status</i>				
Employed	15,138	71.8%	67.1%	76.5%
Unemployed	903	4.3%	2.3%	7.9%
Homemaker	2,023	9.6%	6.7%	12.5%
Student	702	3.3%	1.8%	6.1%
Retired	2,324	11.0%	7.6%	14.4%
Total	21,092	100.0%		
<i>Marital Status</i>				
Married	14,674	69.6%	64.4%	74.7%
Divorced	1,405	6.7%	4.7%	8.6%
Widowed	555	2.6%	1.7%	4.0%
Separated	264	1.3%	0.7%	2.4%
Never Married	3,341	15.8%	11.6%	20.1%
Living as Married	854	4.1%	2.1%	7.9%
Total	21,092	100.0%		

Source: Estimates for the population distribution for income, education, employment status, and marital status were derived from the BRFSS surveys from 1999-2001. Estimates for the average population count from 1999-2001 were provided by the Governor's Office of Planning and Budget.



Tooele County Health District

Counties:

Tooele

Population Estimates by Selected Demographic Characteristics
Utah Adults Ages 18 or Over, 2000

Tooele	Number in Each Category	Percentage of Population
Sex		
Male	13,187	48.8%
Female	13,825	51.2%
Total	27,012	100.0%
Age		
18-34	11,285	41.8%
35-49	8,145	30.2%
50-64	4,548	16.8%
65 or Over	3,034	11.2%
Total	27,012	100.0%
Race		
<i>Only One Race Selected</i>		
White	24,385	90.3%
Black	344	1.3%
American Indian	473	1.8%
Asian	174	0.6%
Pacific Islander	45	0.2%
Some Other Race	1,110	4.1%
<i>Two or More Races</i>	480	1.8%
Total	27,012	100.0%
Hispanic Origin		
Hispanic	2,613	9.7%
Non-Hispanic	24,399	90.3%
Total	27,012	100.0%

Source: Estimates for the average population counts for age, sex, and total population were provided by the Governor's Office of Planning and Budget. Estimates for the population distribution by race and Hispanic origin were estimated by the U.S. Census Bureau Data Set: Census 2000 Summary File 1 (SF 1) 100-Percent Data Table P12.



Tooele County Health District (cont'd)

Population Estimates by Selected Demographic Characteristics
Utah Adults Ages 18 or Over, 1999-2001

Tooele	Number in Each Category	Percentage of Population	95% Confidence Intervals	
			Lower	Upper
Income				
Less Than \$20,000	3,295	12.2%	9.0%	15.4%
\$20,000-\$49,999	13,438	49.8%	44.9%	54.7%
\$50,000 or Over	10,278	38.1%	33.2%	42.9%
Total	27,012	100.0%		
Education				
Less Than High School	2,561	9.5%	6.7%	12.2%
H.S. Grad or G.E.D.	11,321	41.9%	37.1%	46.8%
Some Post High School	7,860	29.1%	25.2%	33.0%
College Graduate	5,270	19.5%	16.0%	23.0%
Total	27,012	100.0%		
Employment Status				
Employed	18,085	67.0%	62.5%	71.4%
Unemployed	1,745	6.5%	3.8%	9.1%
Homemaker	2,561	9.5%	7.0%	11.9%
Student	167	0.6%	0.3%	1.5%
Retired	4,457	16.5%	12.9%	20.1%
Total	27,012	100.0%		
Marital Status				
Married	19,559	72.4%	67.9%	77.0%
Divorced	2,439	9.0%	6.2%	11.9%
Widowed	1,205	4.5%	3.2%	6.2%
Separated	791	2.9%	1.5%	5.7%
Never Married	2,409	8.9%	5.6%	12.3%
Living as Married	608	2.3%	1.3%	3.9%
Total	27,012	100.0%		

Source: Estimates for the population distribution for income, education, employment status, and marital status were derived from the BRFSS surveys from 1999-2001. Estimates for the average population count from 1999-2001 were provided by the Governor's Office of Planning and Budget.



TriCounty Health District

Counties:

- Daggett
- Duchesne
- Uintah

Population Estimates by Selected Demographic Characteristics
Utah Adults Ages 18 or Over, 2000

TriCounty	Number in Each Category	Percentage of Population
Sex		
Male	13,059	49.5%
Female	13,300	50.5%
Total	26,359	100.0%
Age		
18-34	8,640	32.8%
35-49	8,349	31.7%
50-64	5,380	20.4%
65 or Over	3,990	15.1%
Total	26,359	100.0%
Race		
<i>Only One Race Selected</i>		
White	23,700	89.9%
Black	28	0.1%
American Indian	1,885	7.2%
Asian	69	0.3%
Pacific Islander	20	0.1%
Some Other Race	324	1.2%
<i>Two or More Races</i>	333	1.3%
Total	26,359	100.0%
Hispanic Origin		
Hispanic	878	3.3%
Non-Hispanic	25,481	96.7%
Total	26,359	100.0%

Source: Estimates for the average population counts for age, sex, and total population were provided by the Governor's Office of Planning and Budget. Estimates for the population distribution by race and Hispanic origin were estimated by the U.S. Census Bureau Data Set: Census 2000 Summary File 1 (SF 1) 100-Percent Data Table P12.



TriCounty Health District (cont'd)

Population Estimates by Selected Demographic Characteristics
Utah Adults Ages 18 or Over, 1999-2001

TriCounty	Number in Each Category	Percentage of Population	95% Confidence Intervals	
			Lower	Upper
<i>Income</i>				
Less Than \$20,000	6,461	24.5%	20.3%	28.7%
\$20,000-\$49,999	14,181	53.8%	49.0%	58.6%
\$50,000 or Over	5,717	21.7%	17.5%	25.9%
Total	26,359	100.0%		
<i>Education</i>				
Less Than High School	3,453	13.1%	10.0%	16.2%
H.S. Grad or G.E.D.	12,241	46.4%	41.8%	51.0%
Some Post High School	7,143	27.1%	23.0%	31.2%
College Graduate	3,522	13.4%	10.3%	16.5%
Total	26,359	100.0%		
<i>Employment Status</i>				
Employed	15,966	60.6%	56.1%	65.1%
Unemployed	2,976	11.3%	8.2%	14.3%
Homemaker	3,885	14.7%	11.6%	17.9%
Student	448	1.7%	0.7%	3.9%
Retired	3,084	11.7%	9.1%	14.3%
Total	26,359	100.0%		
<i>Marital Status</i>				
Married	19,142	72.6%	68.5%	76.7%
Divorced	2,227	8.5%	5.9%	11.0%
Widowed	1,595	6.1%	4.0%	8.1%
Separated	253	1.0%	0.5%	1.9%
Never Married	2,686	10.2%	7.3%	13.1%
Living as Married	459	1.7%	0.9%	3.4%
Total	26,359	100.0%		

Source: Estimates for the population distribution for income, education, employment status, and marital status were derived from the BRFSS surveys from 1999-2001. Estimates for the average population count from 1999-2001 were provided by the Governor's Office of Planning and Budget.



Utah County Health District

Counties:

Utah

Population Estimates by Selected Demographic Characteristics
Utah Adults Ages 18 or Over, 2000

Utah County	Number in Each Category	Percentage of Population
Sex		
Male	119,187	48.6%
Female	126,077	51.4%
Total	245,264	100.0%
Age		
18-34	134,742	54.9%
35-49	55,742	22.7%
50-64	31,063	12.7%
65 or Over	23,717	9.7%
Total	245,264	100.0%
Race		
<i>Only One Race Selected</i>		
White	228,045	93.0%
Black	601	0.2%
American Indian	1,339	0.5%
Asian	3,068	1.3%
Pacific Islander	1,329	0.5%
Some Other Race	7,681	3.1%
<i>Two or More Races</i>	3,200	1.3%
Total	245,264	100.0%
Hispanic Origin		
Hispanic	16,532	6.7%
Non-Hispanic	228,732	93.3%
Total	245,264	100.0%

Source: Estimates for the average population counts for age, sex, and total population were provided by the Governor's Office of Planning and Budget. Estimates for the population distribution by race and Hispanic origin were estimated by the U.S. Census Bureau Data Set: Census 2000 Summary File 1 (SF 1) 100-Percent Data Table P12.



Utah County Health District (cont'd)

Population Estimates by Selected Demographic Characteristics
Utah Adults Ages 18 or Over, 1999-2001

Utah County	Number in Each Category	Percentage of Population	95% Confidence Intervals	
			Lower	Upper
<i>Income</i>				
Less Than \$20,000	35,490	14.5%	10.8%	18.1%
\$20,000-\$49,999	114,097	46.5%	42.3%	50.7%
\$50,000 or Over	95,702	39.0%	35.1%	43.0%
Total	245,264	100.0%		
<i>Education</i>				
Less Than High School	14,274	5.8%	3.0%	8.6%
H.S. Grad or G.E.D.	58,226	23.7%	20.6%	26.9%
Some Post High School	98,449	40.1%	36.4%	43.9%
College Graduate	74,340	30.3%	26.9%	33.7%
Total	245,264	100.0%		
<i>Employment Status</i>				
Employed	152,873	62.3%	58.4%	66.3%
Unemployed	8,854	3.6%	2.5%	5.2%
Homemaker	36,005	14.7%	12.2%	17.2%
Student	23,104	9.4%	6.6%	12.3%
Retired	24,404	10.0%	7.8%	12.2%
Total	245,264	100.0%		
<i>Marital Status</i>				
Married	168,864	68.9%	65.0%	72.7%
Divorced	14,642	6.0%	4.3%	7.6%
Widowed	8,903	3.6%	2.6%	5.0%
Separated	2,109	0.9%	0.4%	2.1%
Never Married	49,028	20.0%	16.3%	23.7%
Living as Married	1,717	0.7%	0.3%	1.5%
Total	245,264	100.0%		

Source: Estimates for the population distribution for income, education, employment status, and marital status were derived from the BRFSS surveys from 1999-2001. Estimates for the average population count from 1999-2001 were provided by the Governor's Office of Planning and Budget.



Wasatch County Health District

Counties:

Wasatch

Population Estimates by Selected Demographic Characteristics
Utah Adults Ages 18 or Over, 2000

Wasatch	Number in Each Category	Percentage of Population
Sex		
Male	5,065	49.9%
Female	5,089	50.1%
Total	10,154	100.0%
Age		
18-34	3,650	35.9%
35-49	3,344	32.9%
50-64	1,857	18.3%
65 or Over	1,303	12.8%
Total	10,154	100.0%
Race		
<i>Only One Race Selected</i>		
White	9,756	96.1%
Black	13	0.1%
American Indian	49	0.5%
Asian	33	0.3%
Pacific Islander	11	0.1%
Some Other Race	182	1.8%
<i>Two or More Races</i>	110	1.1%
Total	10,154	100.0%
Hispanic Origin		
Hispanic	465	4.6%
Non-Hispanic	9,689	95.4%
Total	10,154	100.0%

Source: Estimates for the average population counts for age, sex, and total population were provided by the Governor's Office of Planning and Budget. Estimates for the population distribution by race and Hispanic origin were estimated by the U.S. Census Bureau Data Set: Census 2000 Summary File 1 (SF 1) 100-Percent Data Table P12.



Wasatch County Health District (cont'd)

Population Estimates by Selected Demographic Characteristics
Utah Adults Ages 18 or Over, 1999-2001

Wasatch	Number in Each Category	Percentage of Population	95% Confidence Intervals	
			Lower	Upper
<i>Income</i>				
Less Than \$20,000	1,042	10.3%	6.5%	14.0%
\$20,000-\$49,999	4,889	48.2%	42.2%	54.1%
\$50,000 or Over	4,223	41.6%	35.6%	47.5%
Total	10,154	100.0%		
<i>Education</i>				
Less Than High School	558	5.5%	3.1%	7.9%
H.S. Grad or G.E.D.	3,416	33.6%	27.3%	40.0%
Some Post High School	3,075	30.3%	24.9%	35.7%
College Graduate	3,105	30.6%	25.5%	35.7%
Total	10,154	100.0%		
<i>Employment Status</i>				
Employed	7,000	68.9%	63.2%	74.7%
Unemployed	515	5.1%	2.4%	7.7%
Homemaker	1,273	12.5%	7.7%	17.4%
Student	116	1.1%	0.3%	5.3%
Retired	1,249	12.3%	9.0%	15.7%
Total	10,154	100.0%		
<i>Marital Status</i>				
Married	8,278	81.5%	77.7%	85.4%
Divorced	488	4.8%	3.4%	6.8%
Widowed	303	3.0%	2.1%	4.3%
Separated	45	0.4%	0.2%	1.2%
Never Married	861	8.5%	5.5%	11.5%
Living as Married	180	1.8%	0.9%	3.6%
Total	10,154	100.0%		

Source: Estimates for the population distribution for income, education, employment status, and marital status were derived from the BRFSS surveys from 1999-2001. Estimates for the average population count from 1999-2001 were provided by the Governor's Office of Planning and Budget.



Weber-Morgan Health District

Counties:

Weber
Morgan

Population Estimates by Selected Demographic Characteristics
Utah Adults Ages 18 or Over, 2000

Weber-Morgan	Number in Each Category	Percentage of Population
Sex		
Male	69,773	49.5%
Female	71,049	50.5%
Total	140,822	100.0%
Age		
18-34	53,726	38.2%
35-49	41,274	29.3%
50-64	24,813	17.6%
65 or Over	21,009	14.9%
Total	140,822	100.0%
Race		
<i>Only One Race Selected</i>		
White	125,917	89.4%
Black	1,864	1.3%
American Indian	985	0.7%
Asian	1,963	1.4%
Pacific Islander	206	0.1%
Some Other Race	7,888	5.6%
<i>Two or More Races</i>	1,999	1.4%
Total	140,822	100.0%
Hispanic Origin		
Hispanic	15,539	11.0%
Non-Hispanic	125,283	89.0%
Total	140,822	100.0%

Source: Estimates for the average population counts for age, sex, and total population were provided by the Governor's Office of Planning and Budget. Estimates for the population distribution by race and Hispanic origin were estimated by the U.S. Census Bureau Data Set: Census 2000 Summary File 1 (SF 1) 100-Percent Data Table P12.



Weber-Morgan Health District (cont'd)

Population Estimates by Selected Demographic Characteristics
Utah Adults Ages 18 or Over, 1999-2001

Weber-Morgan	Number in Each Category	Percentage of Population	95% Confidence Intervals	
			Lower	Upper
<i>Income</i>				
Less Than \$20,000	19,729	14.0%	10.8%	17.2%
\$20,000-\$49,999	70,003	49.7%	44.9%	54.5%
\$50,000 or Over	51,090	36.3%	31.6%	41.0%
Total	140,822	100.0%		
<i>Education</i>				
Less Than High School	9,843	7.0%	4.6%	9.4%
H.S. Grad or G.E.D.	49,527	35.2%	30.8%	39.6%
Some Post High School	50,907	36.2%	31.7%	40.6%
College Graduate	30,530	21.7%	18.0%	25.4%
Total	140,822	100.0%		
<i>Employment Status</i>				
Employed	92,027	65.4%	61.1%	69.6%
Unemployed	7,661	5.4%	3.4%	7.5%
Homemaker	14,068	10.0%	7.3%	12.6%
Student	3,732	2.7%	1.4%	5.1%
Retired	23,334	16.6%	13.5%	19.7%
Total	140,822	100.0%		
<i>Marital Status</i>				
Married	96,590	68.6%	64.3%	72.9%
Divorced	14,153	10.1%	7.4%	12.7%
Widowed	6,576	4.7%	3.4%	6.5%
Separated	1,817	1.3%	0.7%	2.4%
Never Married	19,462	13.8%	10.4%	17.2%
Living as Married	2,225	1.6%	0.8%	3.1%
Total	140,822	100.0%		

Source: Estimates for the population distribution for income, education, employment status, and marital status were derived from the BRFSS surveys from 1999-2001. Estimates for the average population count from 1999-2001 were provided by the Governor's Office of Planning and Budget.



State of Utah

Population Estimates by Selected Demographic Characteristics
Utah Adults Ages 18 or Over, 2000

State of Utah	Number in Each Category	Percentage of Population
Sex		
Male	753,706	49.5%
Female	769,819	50.5%
Total	1,523,525	100.0%
Age		
18-34	648,483	42.6%
35-49	433,724	28.5%
50-64	249,995	16.4%
65 or Over	191,323	12.6%
Total	1,523,525	100.0%
Race		
<i>Only One Race Selected</i>		
White	1,375,103	90.3%
Black	11,483	0.8%
American Indian	18,174	1.2%
Asian	28,126	1.8%
Pacific Islander	8,781	0.6%
Some Other Race	59,224	3.9%
<i>Two or More Races</i>	22,634	1.5%
Total	1,523,525	100.0%
Hispanic Origin		
Hispanic	130,924	8.6%
Non-Hispanic	1,392,601	91.4%
Total	1,523,525	100.0%

Source: Estimates for the average population counts for age, sex, and total population were provided by the Governor's Office of Planning and Budget. Estimates for the population distribution by race and Hispanic origin were estimated by the U.S. Census Bureau Data Set: Census 2000 Summary File 1 (SF 1) 100-Percent Data Table P12.



State of Utah

Population Estimates by Selected Demographic Characteristics
Utah Adults Ages 18 or Over, 1999-2001

State of Utah	Number in Each Category	Percentage of Population	95% Confidence Intervals	
			Lower	Upper
<i>Income</i>				
Less Than \$20,000	207,656	13.6%	12.6%	14.6%
\$20,000-\$49,999	727,483	47.8%	46.3%	49.2%
\$50,000 or Over	588,385	38.6%	37.2%	40.0%
Total	1,523,525	100.0%		
<i>Education</i>				
Less Than High School	91,716	6.0%	5.3%	6.8%
H.S. Grad or G.E.D.	458,124	30.1%	28.9%	31.3%
Some Post High School	534,148	35.1%	33.8%	36.3%
College Graduate	439,537	28.9%	27.7%	30.0%
Total	1,523,525	100.0%		
<i>Employment Status</i>				
Employed	1,011,925	66.4%	65.2%	67.7%
Unemployed	78,766	5.2%	4.6%	5.7%
Homemaker	173,225	11.4%	10.6%	12.2%
Student	64,445	4.2%	3.6%	4.9%
Retired	195,316	12.8%	12.0%	13.7%
Total	1,523,525	100.0%		
<i>Marital Status</i>				
Married	1,052,299	69.1%	67.8%	70.3%
Divorced	124,624	8.2%	7.5%	8.8%
Widowed	70,996	4.7%	4.2%	5.1%
Separated	18,892	1.2%	1.0%	1.5%
Never Married	229,748	15.1%	14.0%	16.1%
Living as Married	27,119	1.8%	1.5%	2.2%
Total	1,523,525	100.0%		

Source: Estimates for the population distribution for income, education, employment status, and marital status were derived from the BRFSS surveys from 1999-2001. Estimates for the average population count from 1999-2001 were provided by the Governor's Office of Planning and Budget.