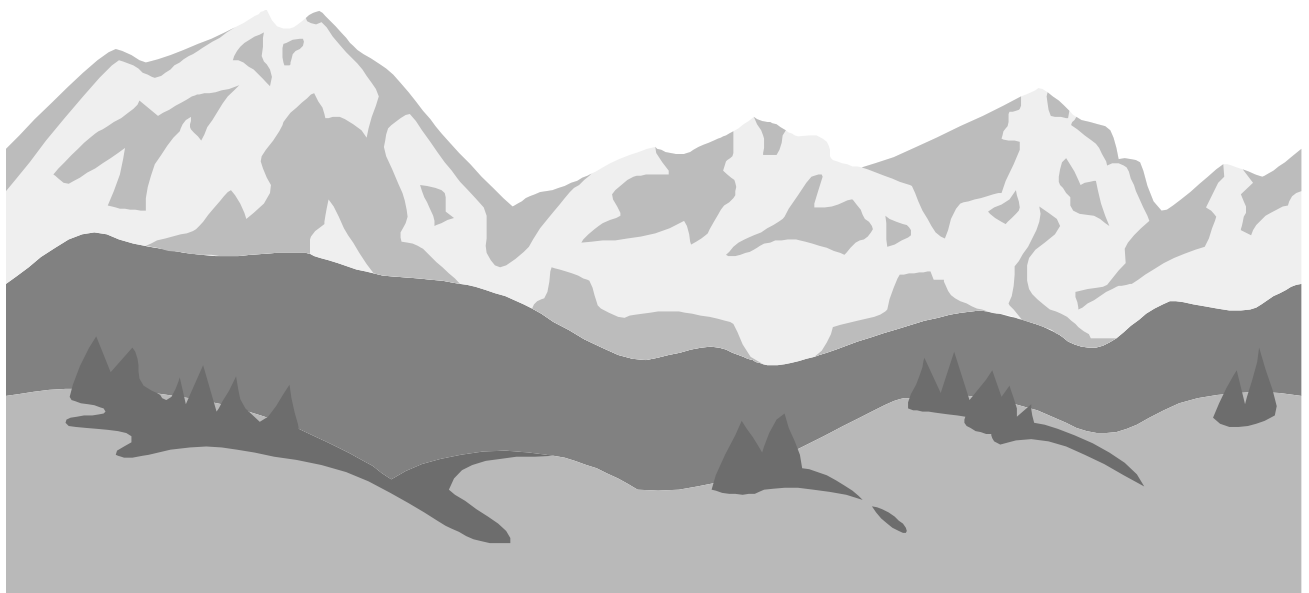


Appendix D: 1995-1998 and 1999-2001 Comparison





Appendix D: 1995-1998 and 1999-2001 Comparison

	Bear River		Central		Davis		Salt Lake		Southeastern	
	1995-1998	1999-2001	1995-1998	1999-2001	1995-1998	1999-2001	1995-1998	1999-2001	1995-1998	1999-2001
General Health Status	9.3%	9.3%	14.4%	14.1%	9.8%	8.7%	10.8%	11.1%	15.6%	16.5%
Diabetes	2.7%	3.2%	5.4%	5.5%	3.4%	3.6%	3.8%	4.6%	4.8%	4.8%
High Cholesterol Awareness	17.0%	22.6%	13.0%	20.6%	15.0%	24.5% *	17.7%	20.5%	17.1%	16.3%
High Blood Pressure Awareness	19.9%	24.2%	20.0%	26.4%	19.9%	22.1%	20.9%	22.6%	22.4%	25.5%
Unable to Get Needed Care Due to Cost	10.1%	11.9%	11.6%	8.5%	6.0%	7.2%	11.0%	10.5%	14.2%	16.0%
Dental Care Coverage	60.8%	64.4%	47.6%	55.0%	73.3%	74.2%	64.9%	66.8%	52.6%	51.7%
Routine Dental Care	73.8%	74.9%	62.2%	69.8%	78.5%	79.0%	70.8%	75.3% *	59.5%	66.4%
Cholesterol Screening	74.2%	62.8% *	68.9%	61.5%	77.5%	71.6%	76.3%	67.1% *	64.7%	60.1%
Current Cigarette Smoking	11.3%	8.5%	14.3%	12.4%	10.1%	13.1%	17.3%	16.1%	20.3%	19.0%
Quit Smoking Attempt	58.9%	58.2%	47.3%	46.4%	46.6%	53.2%	45.8%	54.6%	38.0%	54.4%
Binge Drinking	5.8%	6.5%	6.0%	9.0%	6.6%	5.3%	10.8%	13.4%	12.6%	12.8%
Physical Inactivity	19.1%	12.8%	22.9%	19.1%	14.8%	16.9%	18.2%	16.6%	21.0%	18.4%
Regular Physical Activity	26.1%	28.1%	29.5%	24.3%	25.1%	27.2%	27.3%	24.8%	28.9%	28.4%
Overweight or Obese	49.5%	53.0%	49.5%	59.6%	51.2%	58.6%	49.4%	53.5%	49.0%	53.3%

* statistically significant

	Summit		Tooele		TriCounty		Utah County		Wasatch	
	1995-1998	1999-2001	1995-1998	1999-2001	1995-1998	1999-2001	1995-1998	1999-2001	1995-1998	1999-2001
General Health Status	5.2%	6.2%	11.5%	15.8%	13.6%	17.6%	10.1%	7.8%	9.5%	9.2%
Diabetes	2.5%	2.5%	4.9%	8.1%	2.7%	6.0%	3.2%	4.5%	3.4%	5.0%
High Cholesterol Awareness	13.2%	19.2%	20.0%	26.4%	12.8%	18.6%	14.7%	18.0%	15.1%	19.6%
High Blood Pressure Awareness	11.6%	14.6%	21.0%	29.2%	22.5%	24.4%	17.5%	16.4%	19.2%	24.3%
Unable to Get Needed Care Due to Cost	9.2%	8.1%	8.9%	7.9%	16.7%	19.7%	11.2%	8.4%	8.0%	9.1%
Dental Care Coverage	57.8%	64.9%	75.0%	75.6%	45.6%	45.9%	62.3%	66.6%	53.4%	62.0%
Routine Dental Care	73.7%	84.3% *	63.8%	69.3%	59.9%	58.8%	70.6%	76.2%	71.9%	79.1%
Cholesterol Screening	73.5%	69.7%	76.8%	69.8%	68.7%	58.4%	76.4%	62.7% *	67.2%	64.6%
Current Cigarette Smoking	13.4%	8.4%	20.1%	18.4%	18.6%	19.3%	6.7%	5.8%	13.4%	9.7%
Quit Smoking Attempt	53.1%	45.8%	36.8%	47.4%	43.1%	53.2%	61.0%	66.3%	45.9%	61.4%
Binge Drinking	19.4%	20.7%	9.4%	12.1%	9.8%	10.9%	4.9%	5.3%	6.8%	7.2%
Physical Inactivity	11.7%	10.1%	27.6%	20.2%	20.1%	22.5%	13.0%	14.3%	14.9%	19.5%
Regular Physical Activity	36.8%	42.8%	23.2%	24.1%	28.2%	24.6%	26.4%	28.4%	26.1%	26.0%
Overweight or Obese	37.4%	41.8%	55.6%	56.2%	51.9%	60.8% *	45.9%	48.1%	48.5%	54.1%

* statistically significant

Note: Crude rates have been reported here because data for 1995-1998 were not age-adjusted.