

Overview of Utah Cancer Incidence and Mortality

October 27, 2011



Utah Cancer Registry



Produced by the Data Acquisition, Utilization, and Management Team
Presented by Kim Herget

What is Cancer Mortality?

- A **cancer mortality rate** is the number of deaths, with cancer as the underlying cause of death, occurring in a specified population during a year or a given time period. Cancer mortality is usually expressed as the number of deaths due to cancer per 100,000 population.

$$\textit{Mortality Rate} = \left(\frac{\textit{Cancer Deaths}}{\textit{Population}} \right) \times 100,000$$

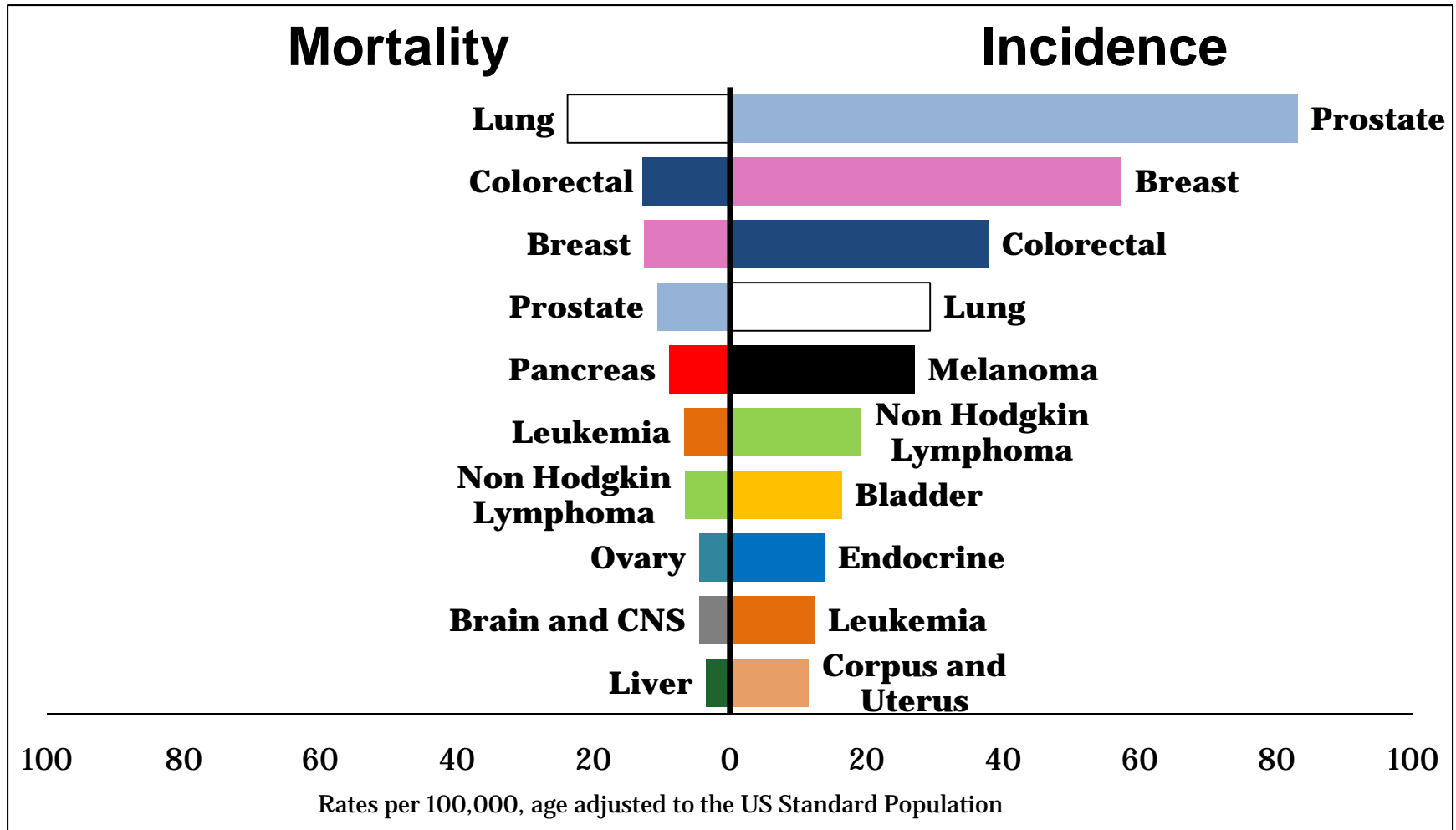
What affects cancer mortality?

- Overall health (obesity, diet, physical activity, etc...)
- Screening Behavior
- Access to Care (cost, location, language, etc...)
- Education about treatment options
- Availability of most current treatments

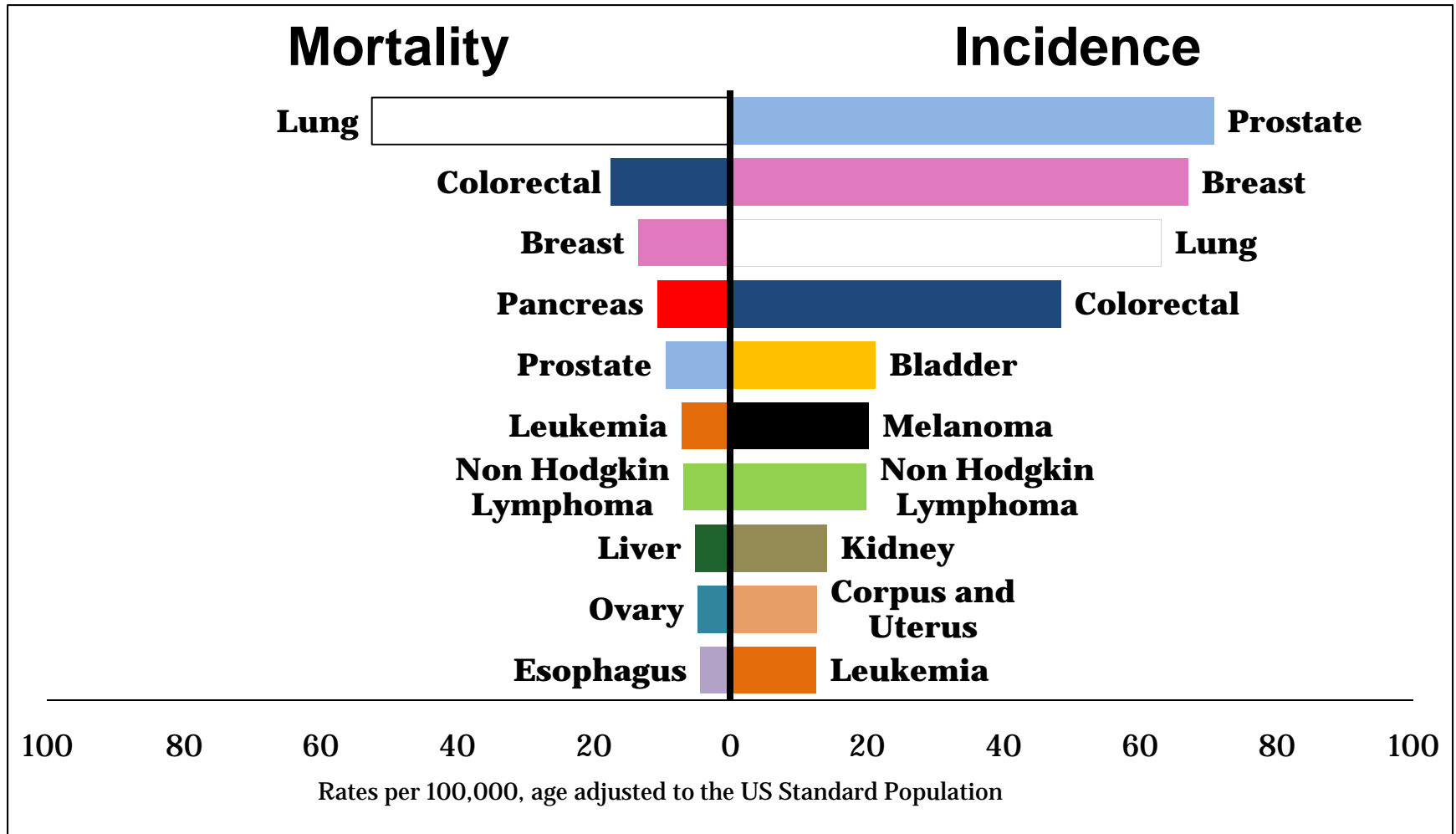
Citations

- 1 – Mortality: Surveillance, Epidemiology, and End Results (SEER) Program (www.seer.cancer.gov) SEER*Stat Database: Mortality - All COD, Aggregated With State, Total U.S. (1969-2007) <Katrina/Rita Population Adjustment>, National Cancer Institute, DCCPS, Surveillance Research Program, Cancer Statistics Branch, released June 2010. Underlying mortality data provided by NCHS (www.cdc.gov/nchs).
- 2 - Incidence: Surveillance, Epidemiology, and End Results (SEER) Program (www.seer.cancer.gov) SEER*Stat Database: Incidence - SEER 17 Regs Research Data + Hurricane Katrina Impacted Louisiana Cases, Nov 2010 Sub (2000-2008) <Katrina/Rita Population Adjustment> - Linked To County Attributes - Total U.S., 1969-2009 Counties, National Cancer Institute, DCCPS, Surveillance Research Program, Cancer Statistics Branch, released April 2011, based on the November 2010 submission.
- 3 - <http://www.cancer-rates.info/ut/index.php>
- 4 – Utah Department of Health

Utah Incidence and Mortality^{1,2} 2003-2007

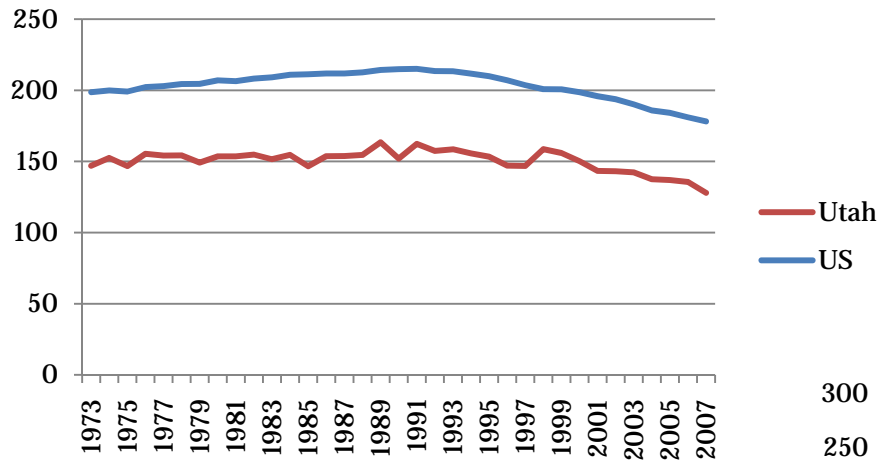


US Incidence and Mortality^{1,2} 2003-2007

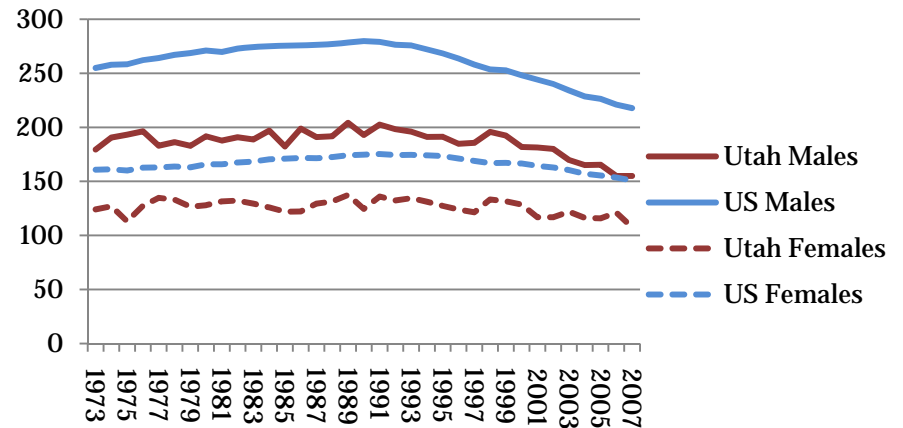


Cancer Mortality Trends over Time¹

Overall Cancer Mortality, 1973-2007



Overall Cancer Mortality By Sex, 1973-2007



Rates per 100,000, age adjusted to the US Standard Population

Utah Mortality By County³, 2003-2007

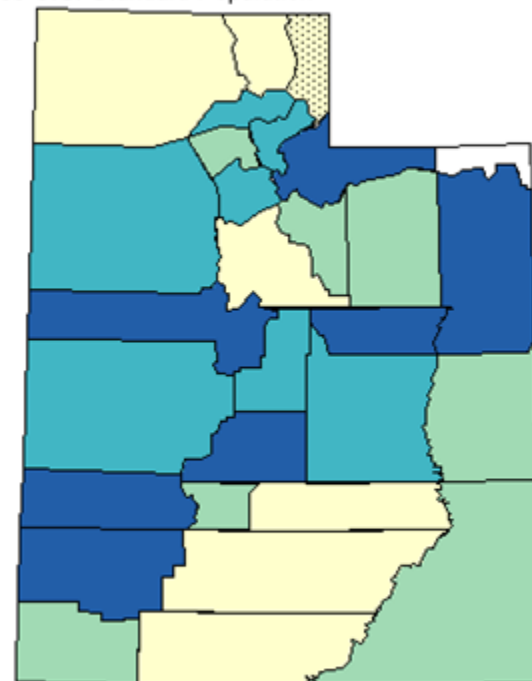
- Utah Average Rate – 135.7
- US Average Rate – 183.8
- Healthy People Goal – 160.6

Age-Adjusted Cancer Mortality Rates in Utah
All Sites, 2003-2007
By County
Age-Adjusted to the 2000 U.S. Standard Population

Rate per 100,000

81.52 - 122.67
126.13 - 137.09
137.10 - 148.07
149.49 - 189.54

Unstable
Risk Population
less than 1000



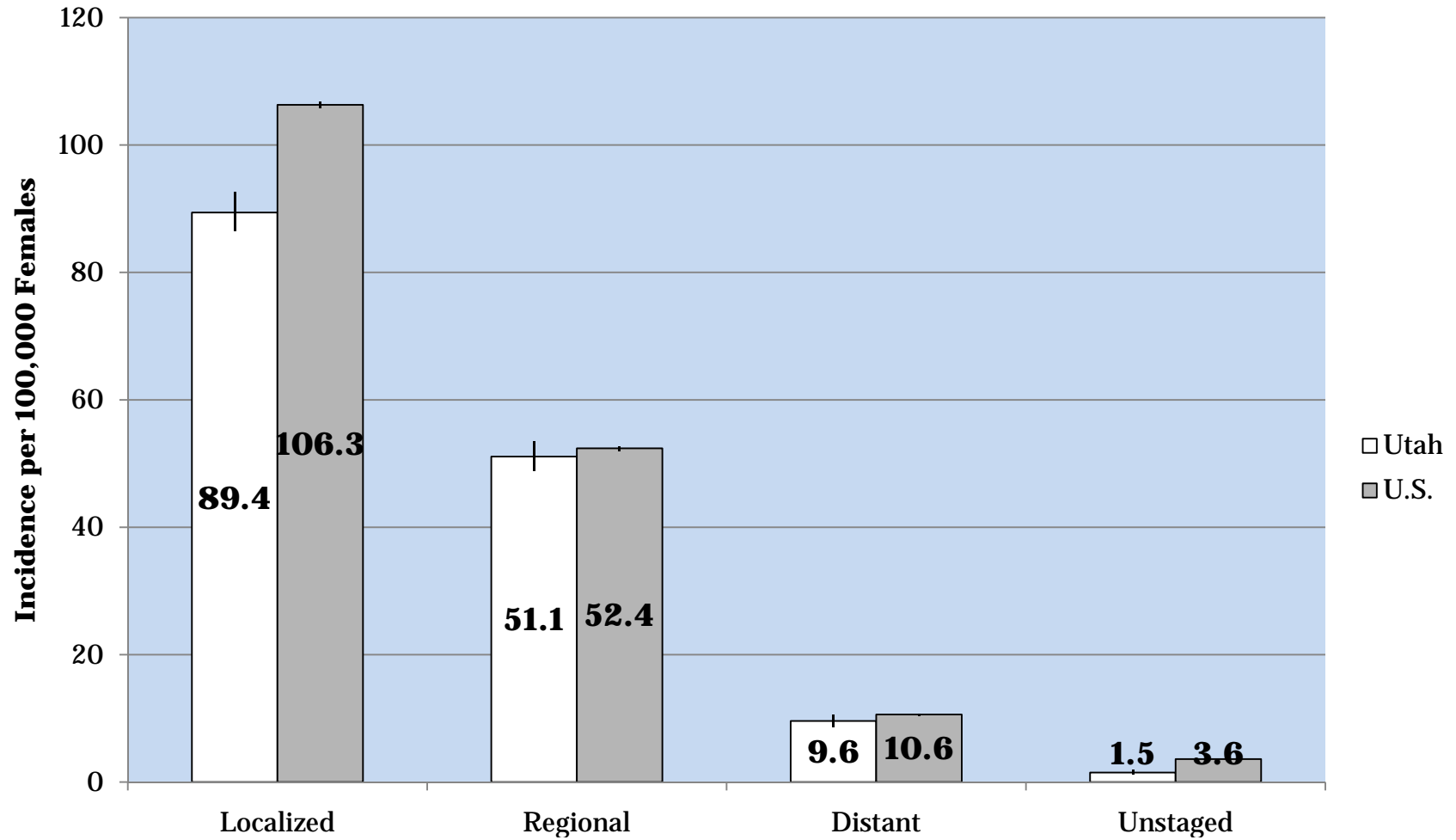
Data accessed October 17, 2011.
Based on data released September 8, 2011.
Copyright (C) 2011 Utah Cancer Registry



BREAST CANCER

Incidence and Mortality

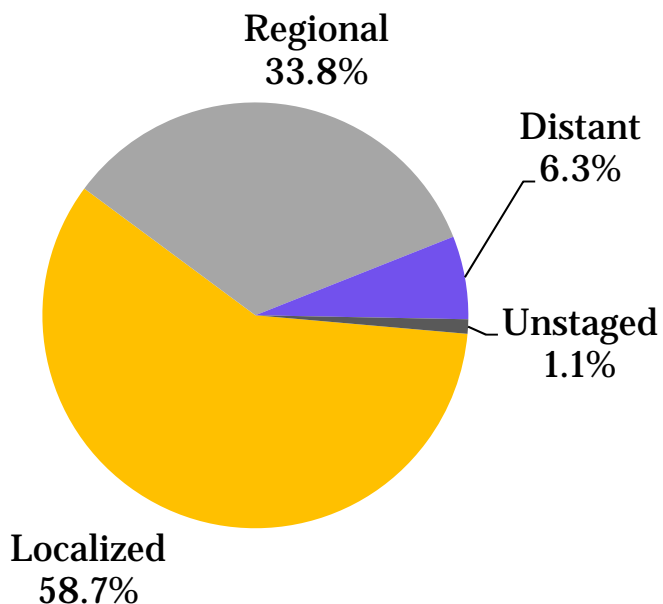
Female Breast Cancer Incidence²



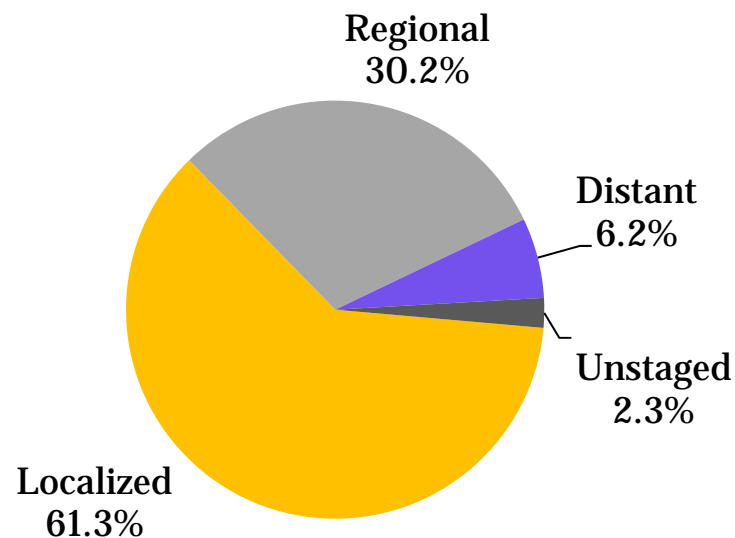
Aged 20+, Diagnosed 2003-2007
Rates are age-adjusted to the 2000 US standard population.

Breast Cancer Incidence by Stage² Utah and US, 2003-2007

Utah



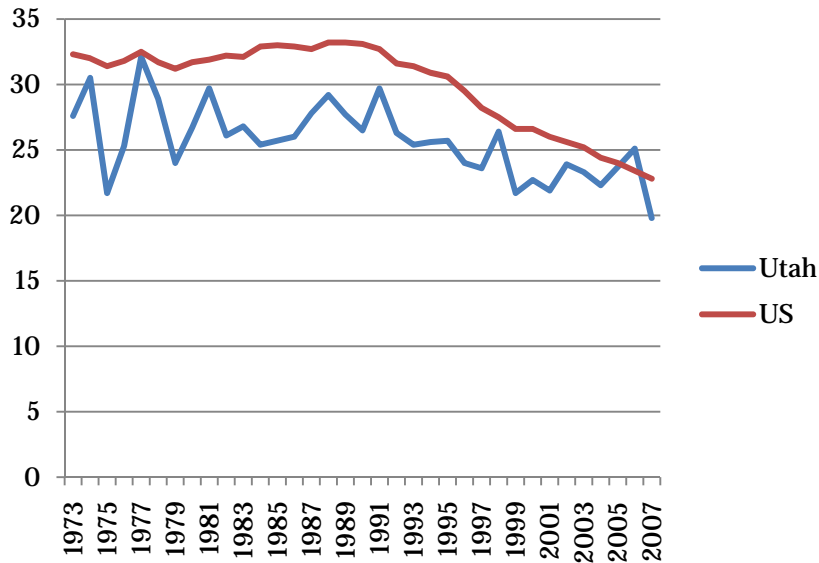
US



Female Breast Cancer Only
Estimates are age-adjusted to the 2000 US standard population.

Breast Cancer Mortality^{1,3}

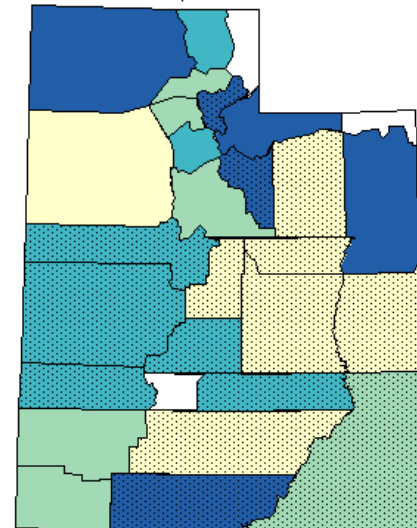
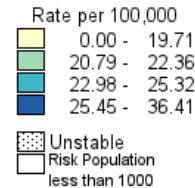
Breast Cancer Mortality, 2003-2007



**Age-Adjusted Cancer Mortality Rates in Utah
Female Breast, 2003-2007
By County**

Age-Adjusted to the 2000 U.S. Standard Population

Utah Rate: 22.56

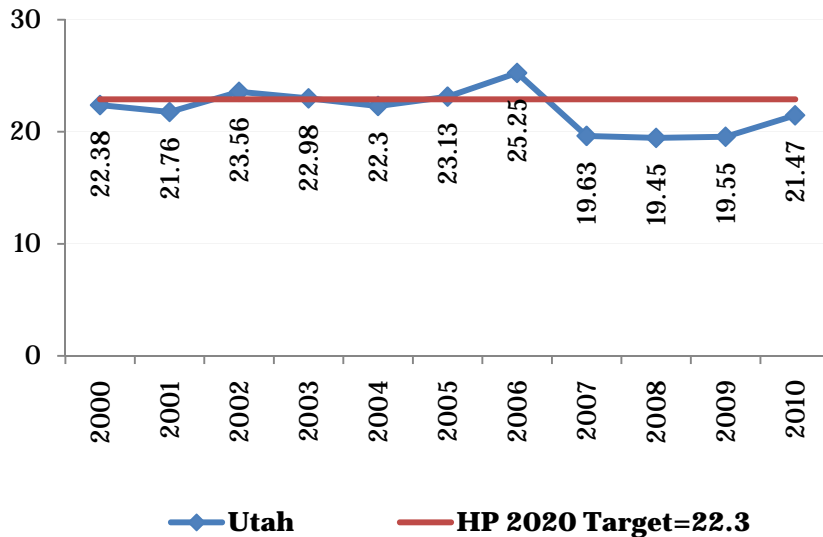


Data accessed October 11, 2011.
Based on data released September 8, 2011.
Copyright (C) 2011 Utah Cancer Registry

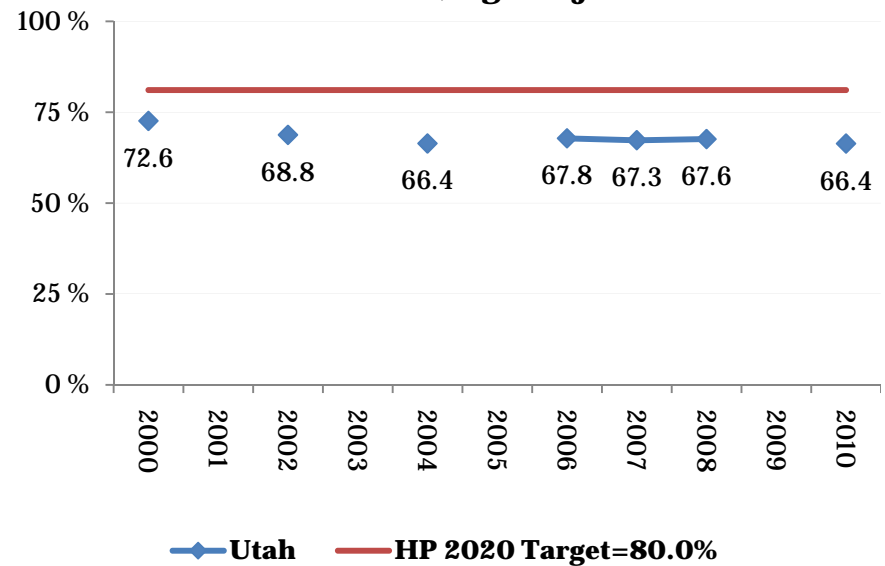
Female Breast Cancer Only
Rates per 100,000, age adjusted to
the US Standard Population

Healthy People Goals⁴

Utah Breast Cancer Mortality & HP 2020 Target, Age-Adjusted per 100,000 Females



Percent of Utah Women Aged 40 or Older Who Have Had a Mammogram in the Past 2 Years, Age-Adjusted

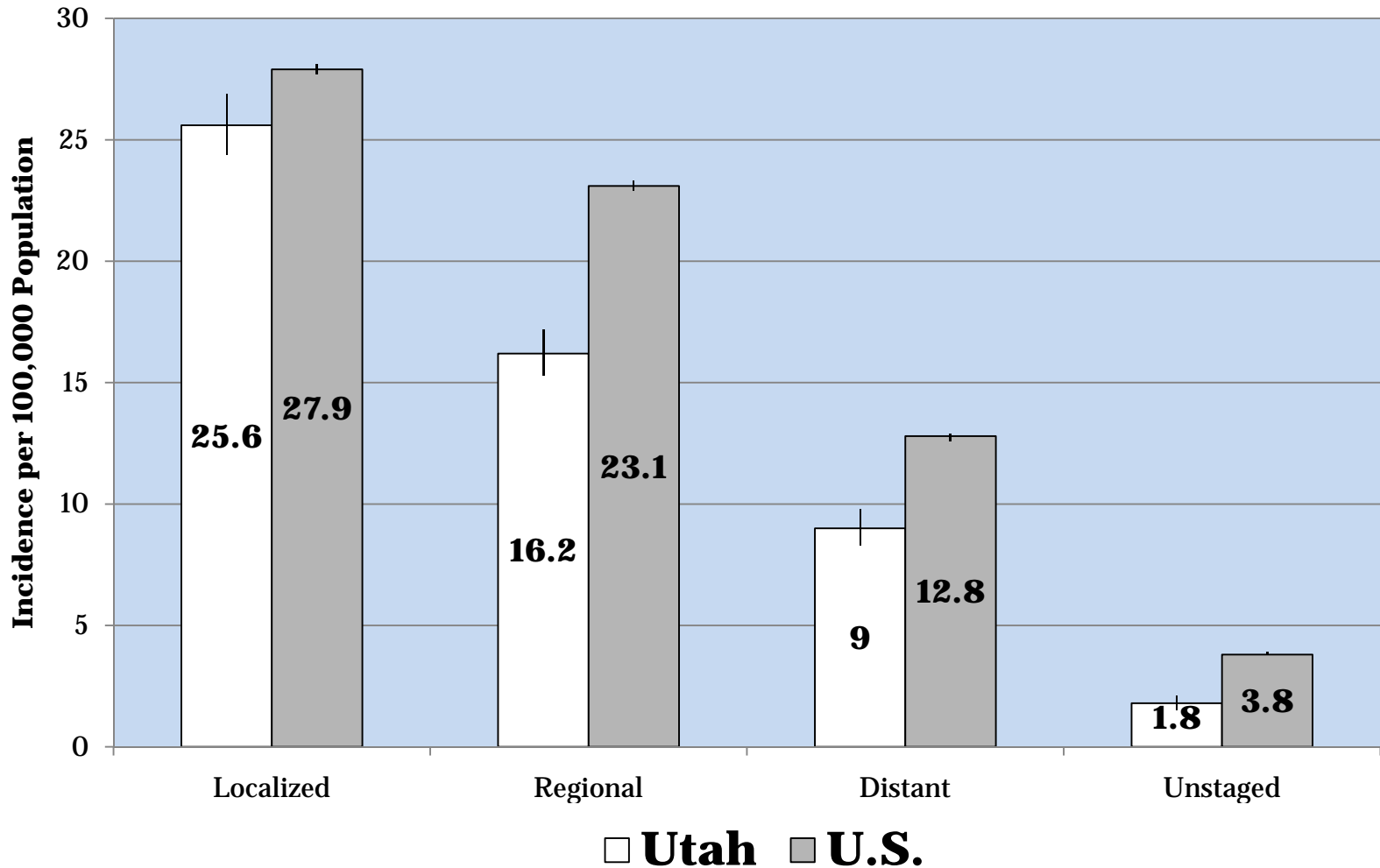




COLORECTAL CANCER

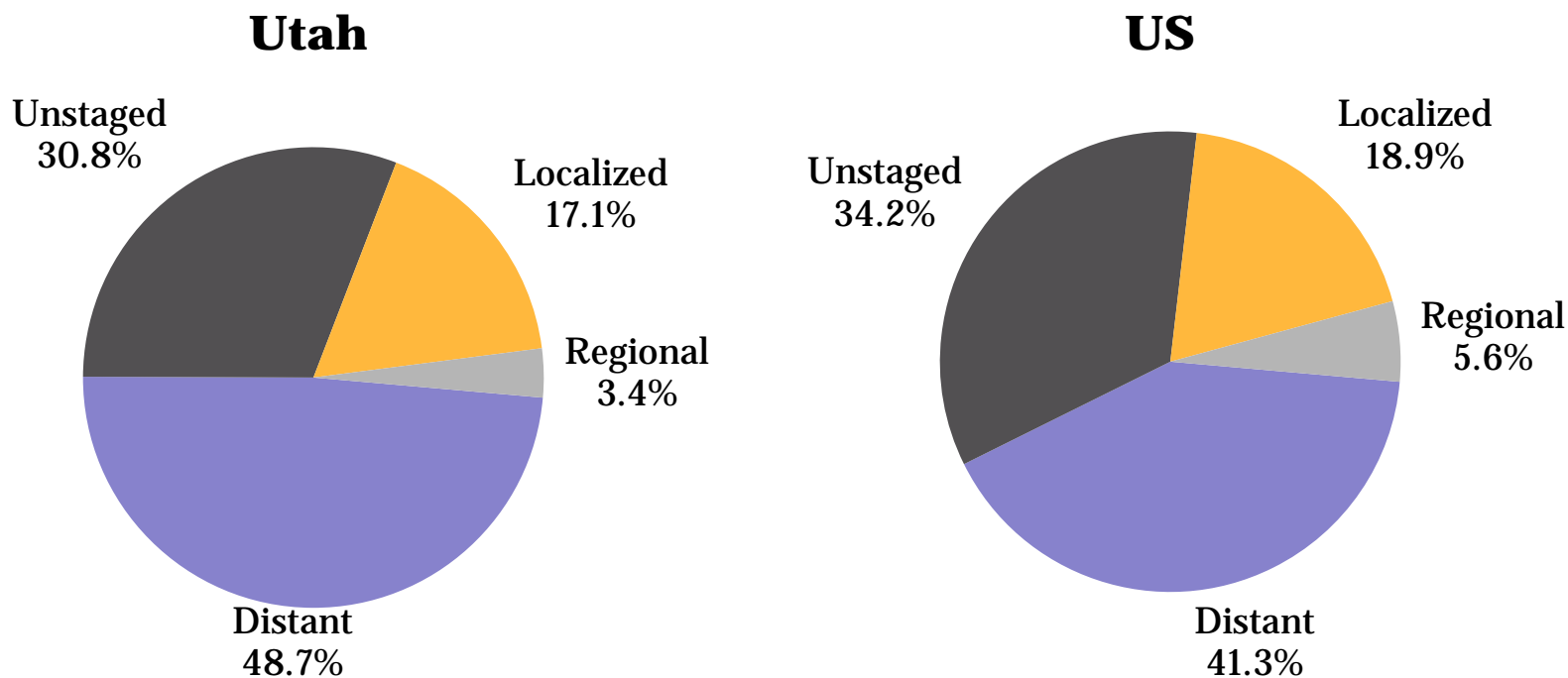
Incidence and Mortality

Colon Cancer Incidence²



Aged 20+, Diagnosed 2003-2007
Rates are age-adjusted to the 2000 US standard population.

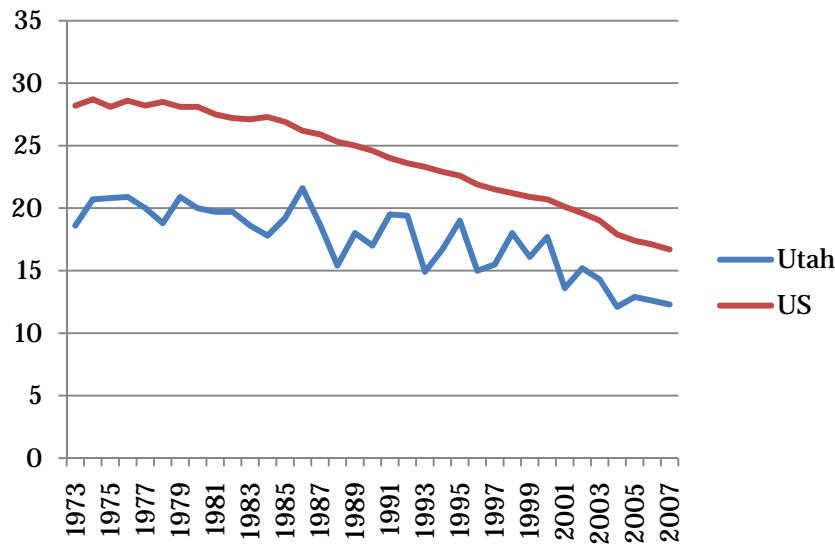
Colon Cancer Incidence by Stage² Utah and US, 2003-2007



Rates are per 100,000 Estimates are age-adjusted to the 2000 US standard population.

Colorectal Cancer Mortality^{1,3}

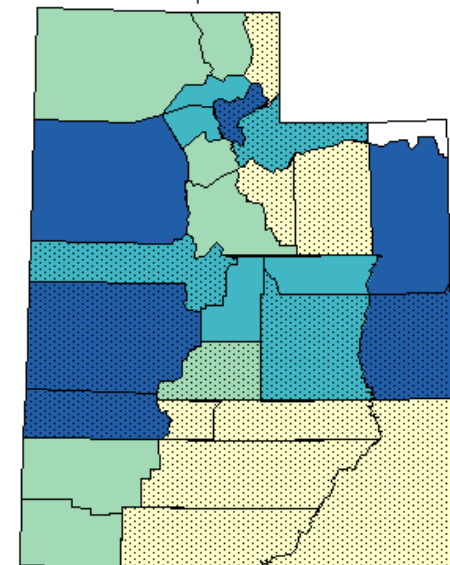
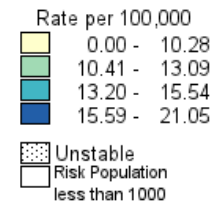
Colorectal Cancer Mortality, 2003-2007



**Age-Adjusted Cancer Mortality Rates in Utah
Colon and Rectum, 2003-2007
By County**

Age-Adjusted to the 2000 U.S. Standard Population

Utah Rate: 12.74

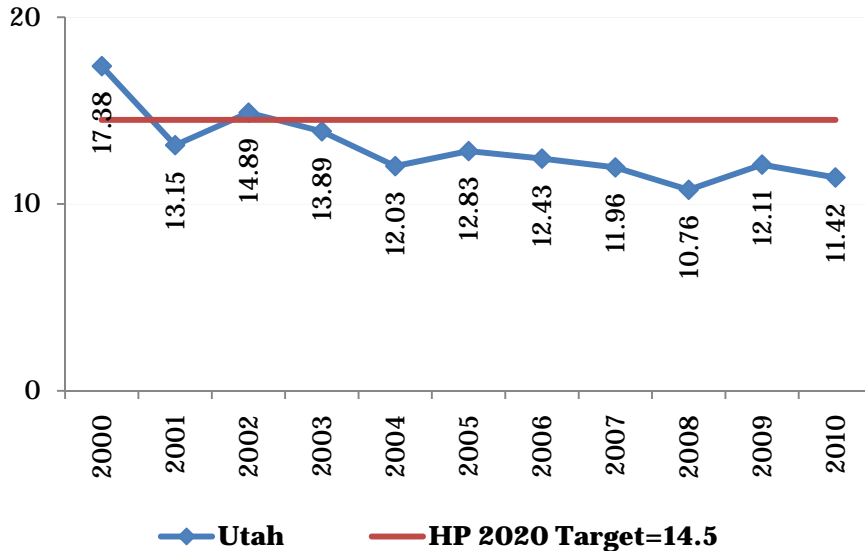


Data accessed October 11, 2011.
Based on data released September 8, 2011.
Copyright (C) 2011 Utah Cancer Registry

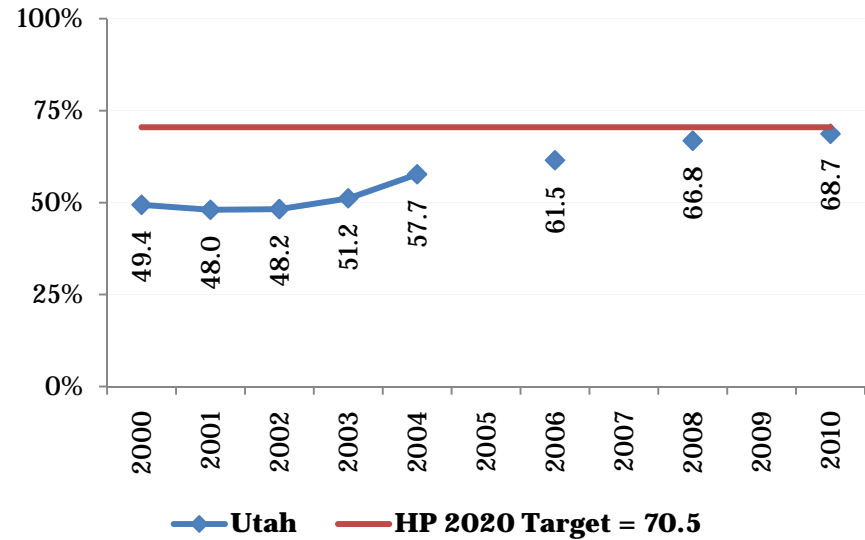
Rates per 100,000, age adjusted to the US Standard Population

Healthy People Goals⁴

Utah Colon Cancer Mortality & HP 2020 Target



Percent of Utah Adults Aged 50 And Older Who Had a FOBT Within the Last Year or Sigmoidoscopy or Colonoscopy Within the Last 10 Years

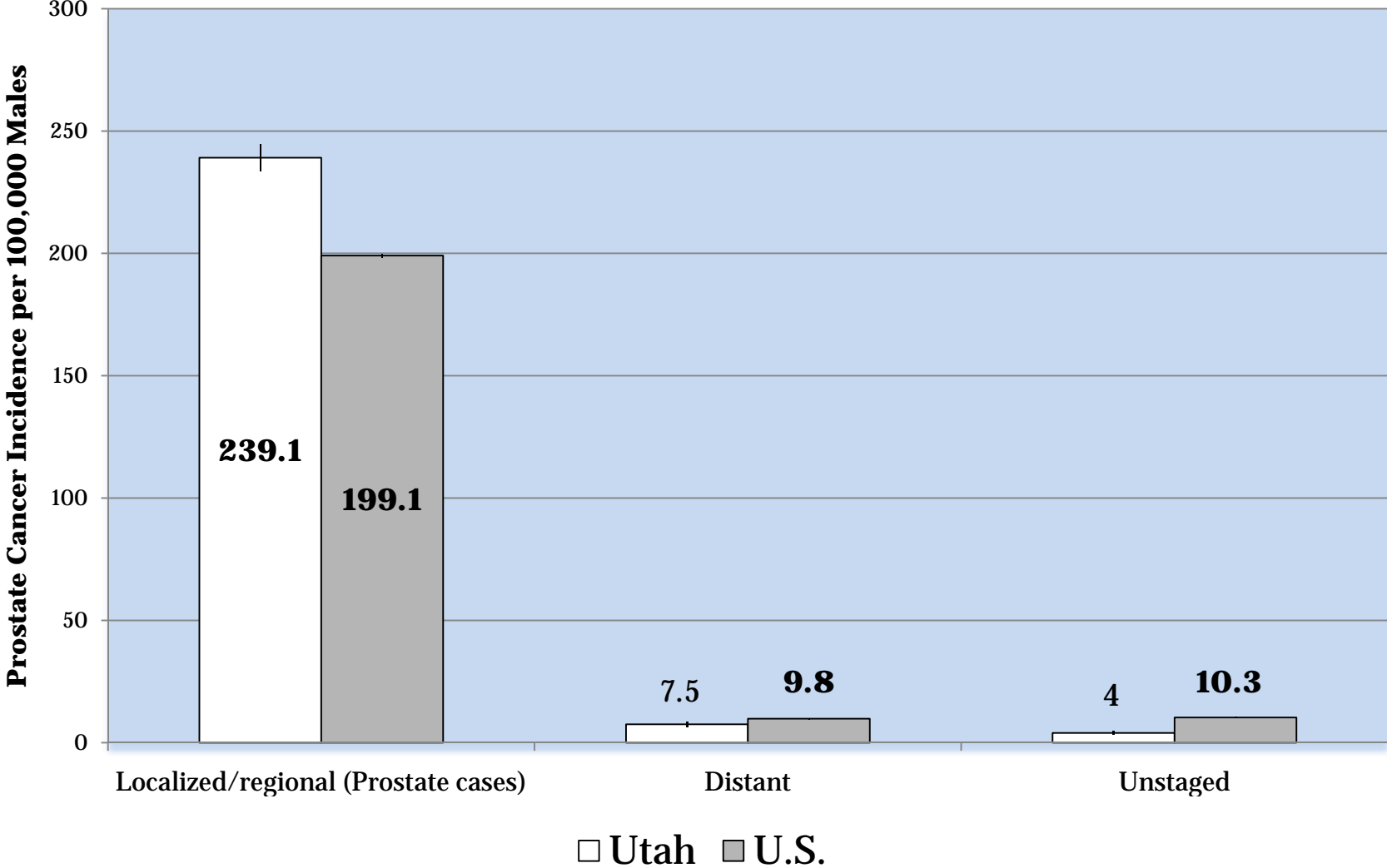


Rates are per 100,000 Estimates are age-adjusted to the 2000 US standard population.



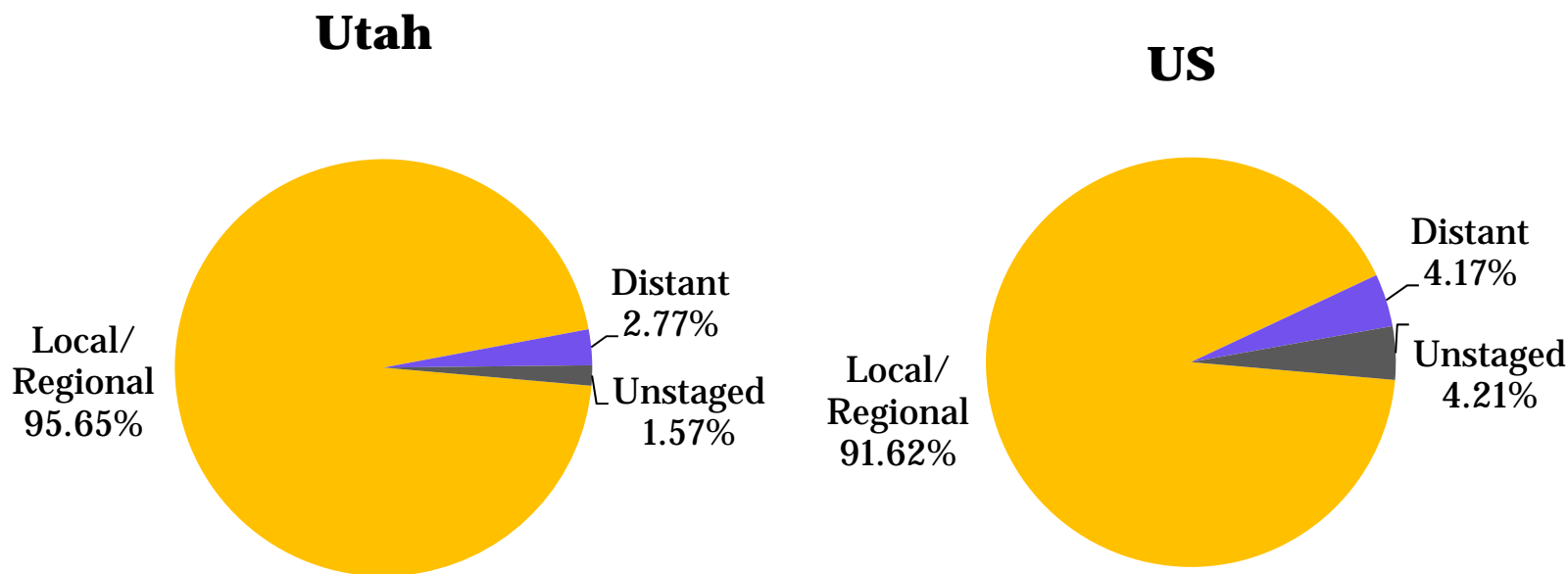
PROSTATE CANCER Incidence and Mortality

Prostate Cancer Incidence²



Males Aged 20+, Diagnosed 2003-2007
Rates are age-adjusted to the 2000 US standard population.

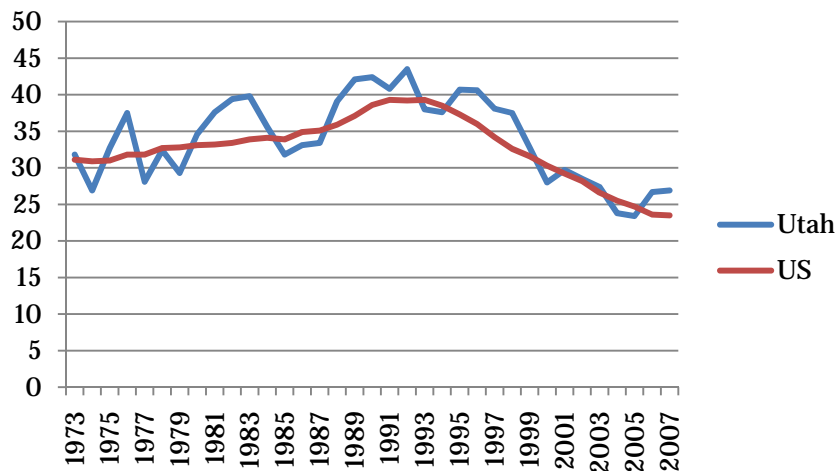
Prostate Cancer Incidence by Stage² Utah and US, 2003-2007



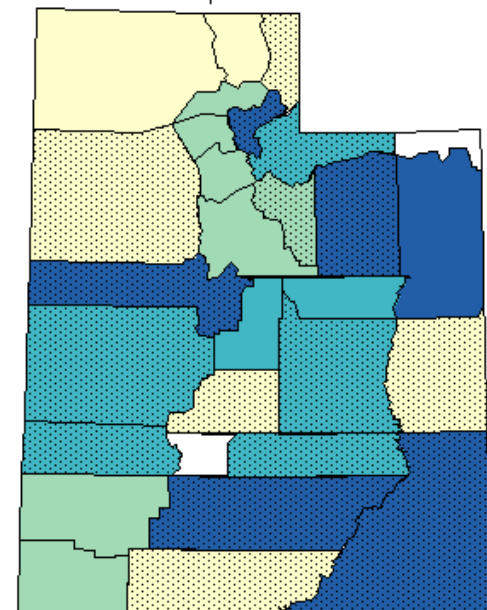
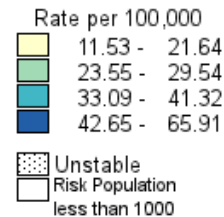
Rates are per 100,000 Estimates are age-adjusted to the 2000 US standard population.

Prostate Cancer Mortality^{1,3}

Prostate Cancer Mortality, 2003-2007



**Age-Adjusted Cancer Mortality Rates in Utah
Prostate, 2003-2007
By County**
Age-Adjusted to the 2000 U.S. Standard Population
Utah Rate: 26.32

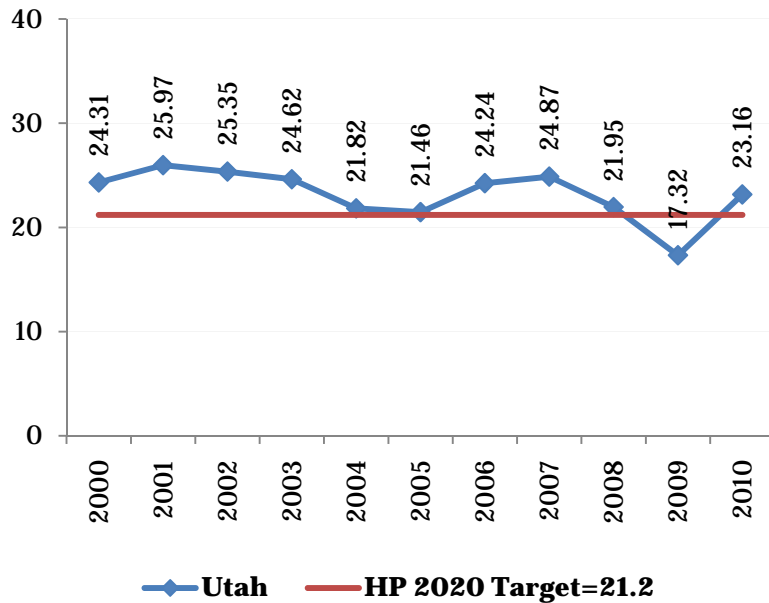


Rates per 100,000, age adjusted to
the US Standard Population

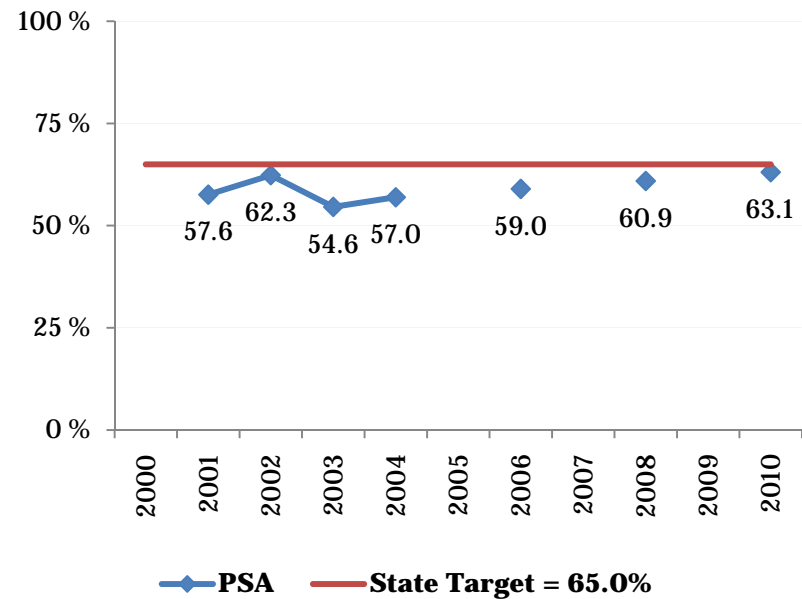
Data accessed October 11, 2011.
Based on data released September 8, 2011.
Copyright (C) 2011 Utah Cancer Registry

Healthy People Goals⁴

**Utah Prostate Cancer Mortality & HP
2020 Target**



**Percent of Men Aged 40+ Who Ever
Had PSA Test by Year, 2000-2010**



Rates are per 100,000 Estimates are age-adjusted to the 2000 US standard population.

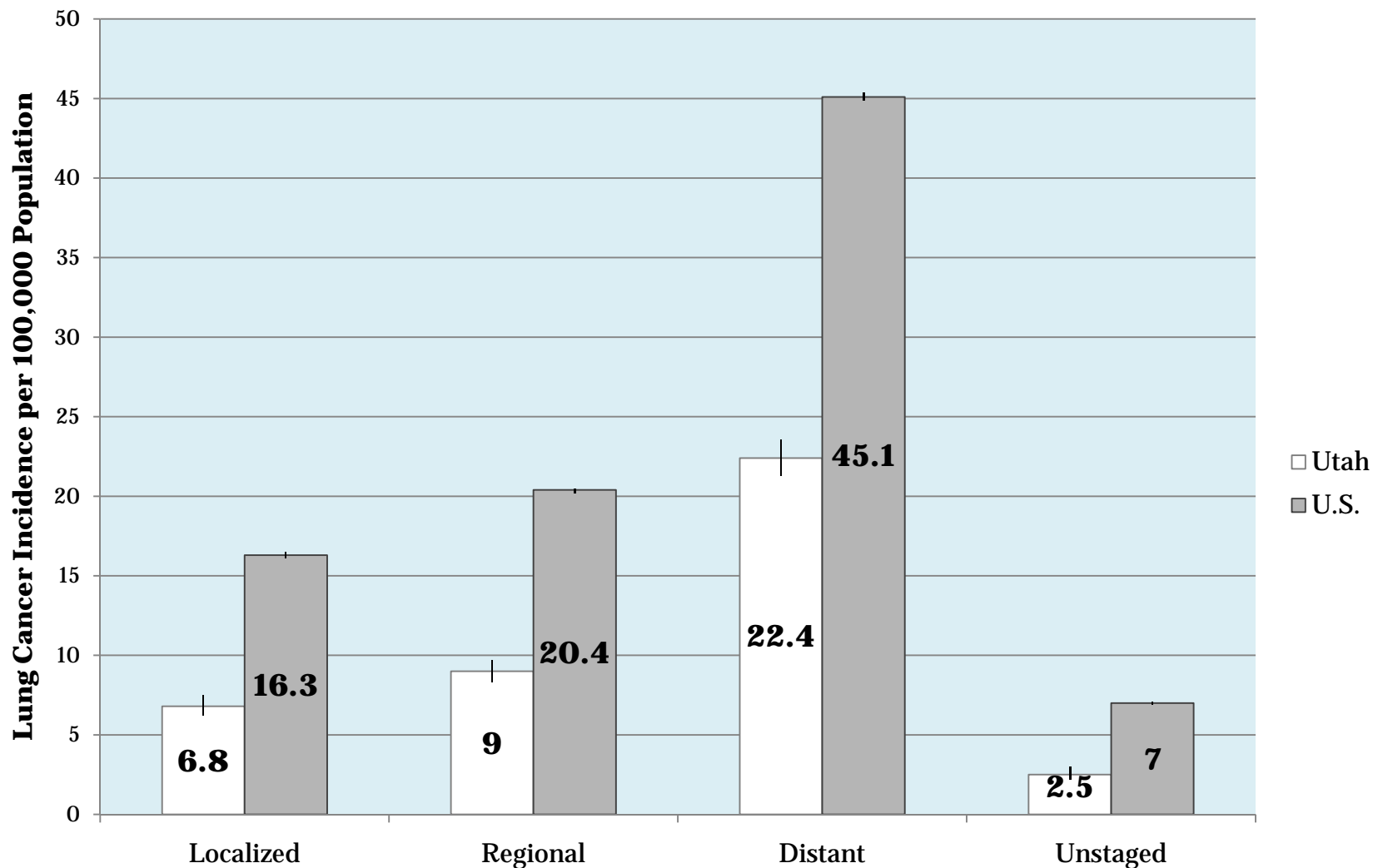


LUNG CANCER

Incidence and Mortality



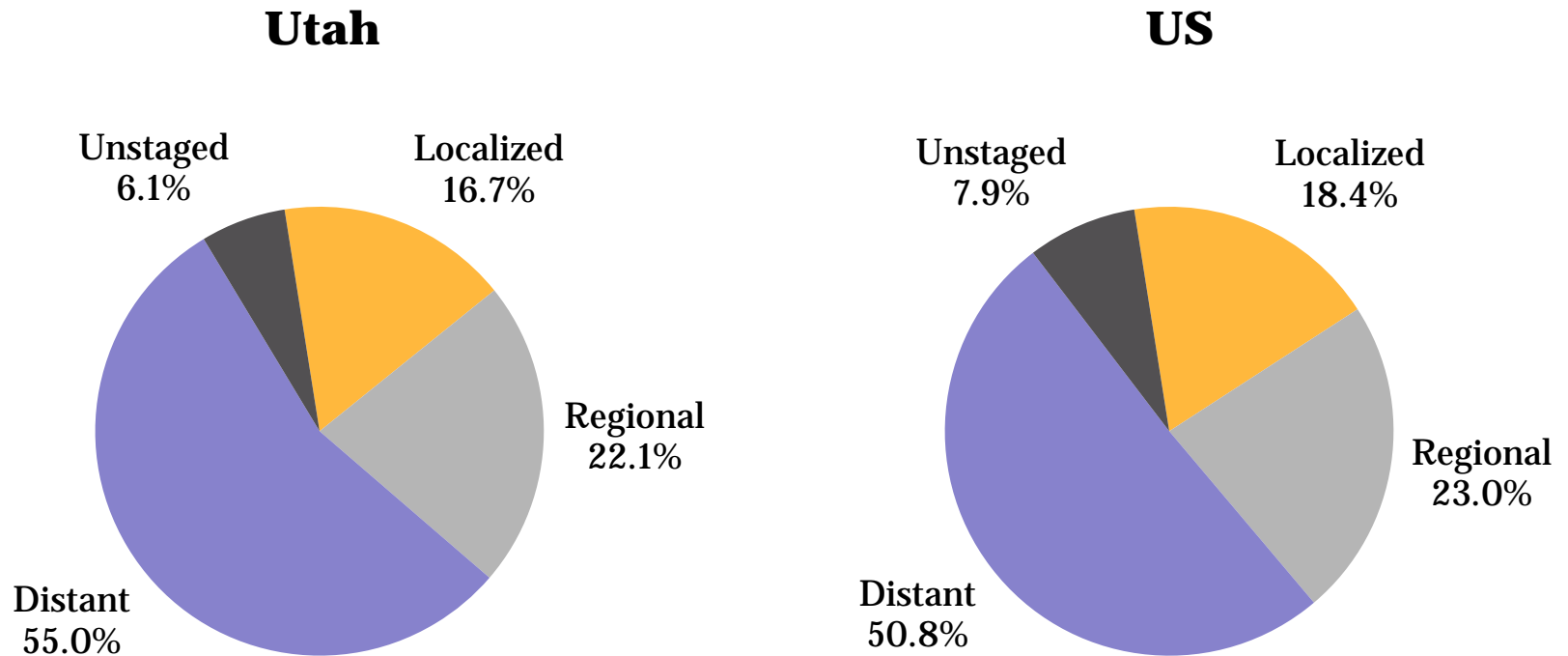
Lung Cancer Incidence²



Aged 20+, Diagnosed 2003-2007

Rates are age-adjusted to the 2000 US standard population.

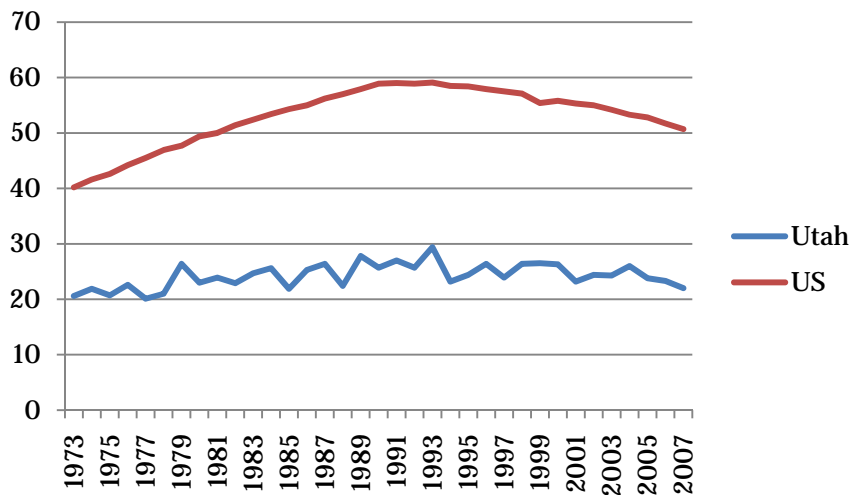
Lung Cancer Incidence by Stage Utah and US², 2003-2007



Rates are per 100,000 Estimates are age-adjusted to the 2000 US standard population.

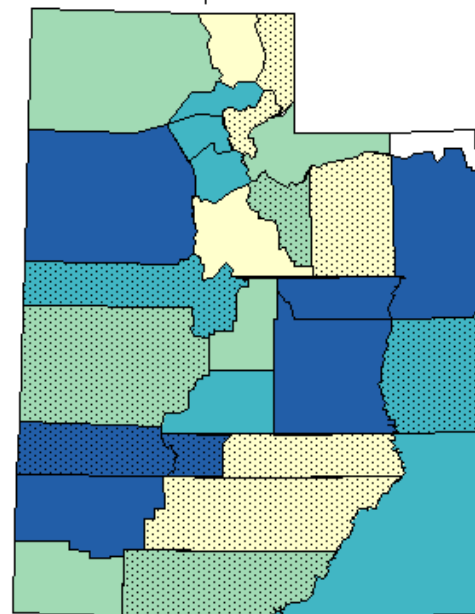
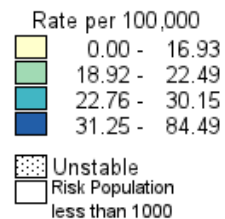
Lung Cancer Mortality^{1,3}

Lung Cancer Mortality, 2003-2007



**Age-Adjusted Cancer Mortality Rates in Utah
Lung and Bronchus, 2003-2007
By County**

Age-Adjusted to the 2000 U.S. Standard Population
Utah Rate: 23.58

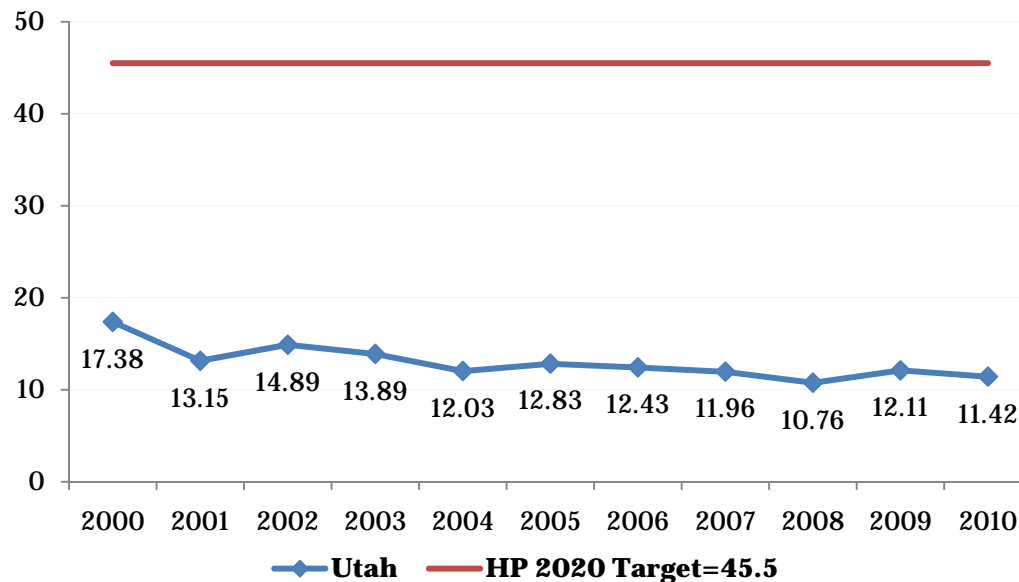


Rates per 100,000, age adjusted to the US Standard Population

Data accessed October 11, 2011.
Based on data released September 8, 2011.
Copyright (C) 2011 Utah Cancer Registry

Healthy People Goals⁴

Utah Lung Mortality & HP 2020 Target

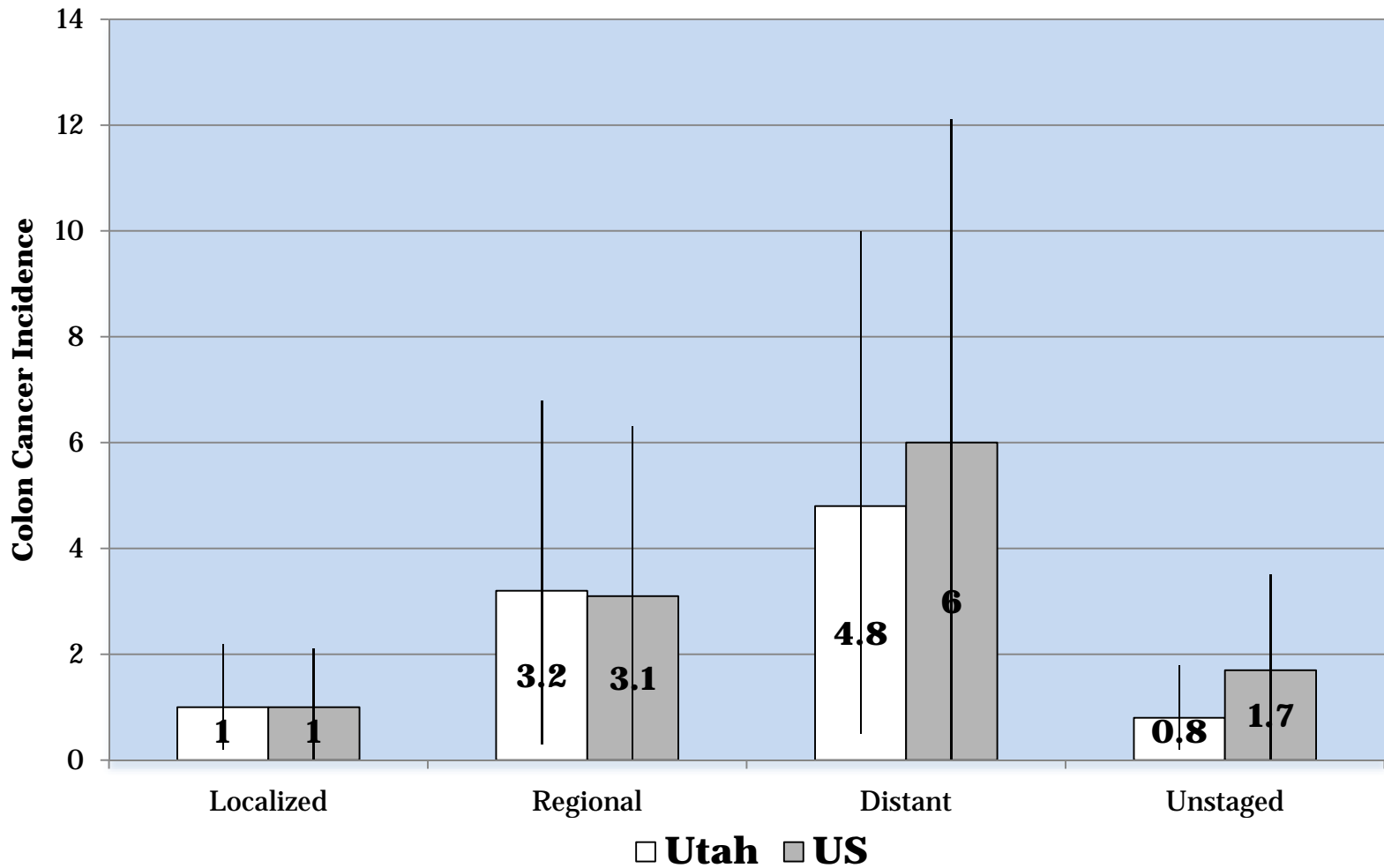


Rates are per 100,000 Estimates are age-adjusted to the 2000 US standard population.



Pancreatic Cancer Incidence and Mortality

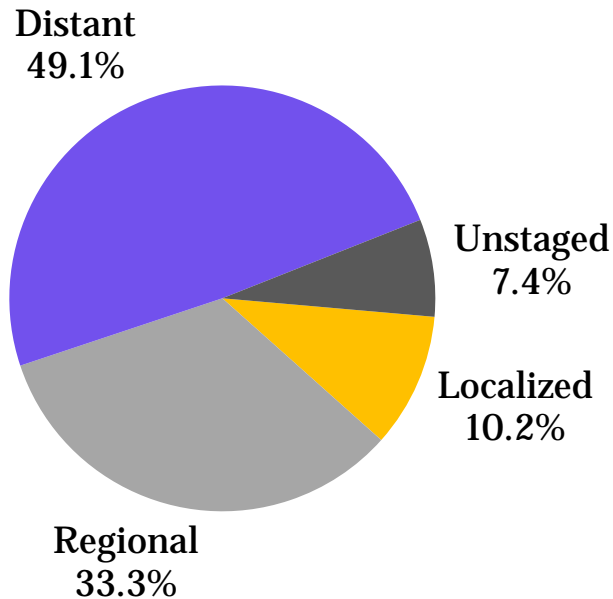
Pancreatic Cancer Incidence ²



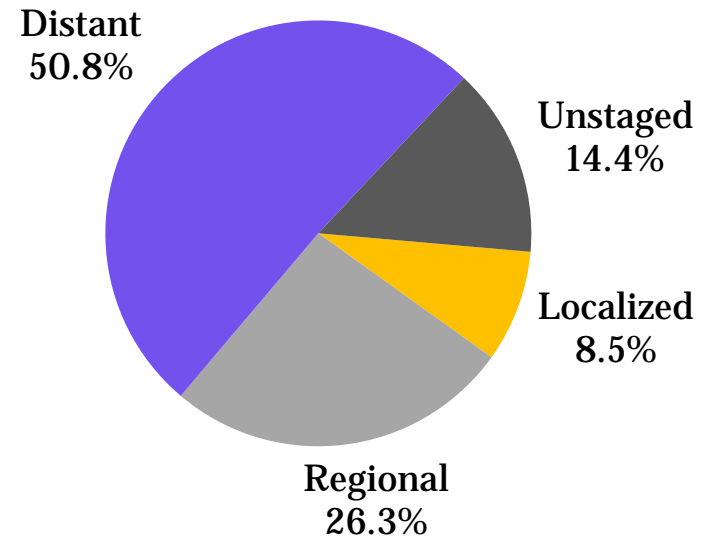
Aged 20+, Diagnosed 2003-2007
Rates are age-adjusted to the 2000 US standard population.

Pancreatic Cancer Incidence by Stage Utah and US², 2003-2007

Utah



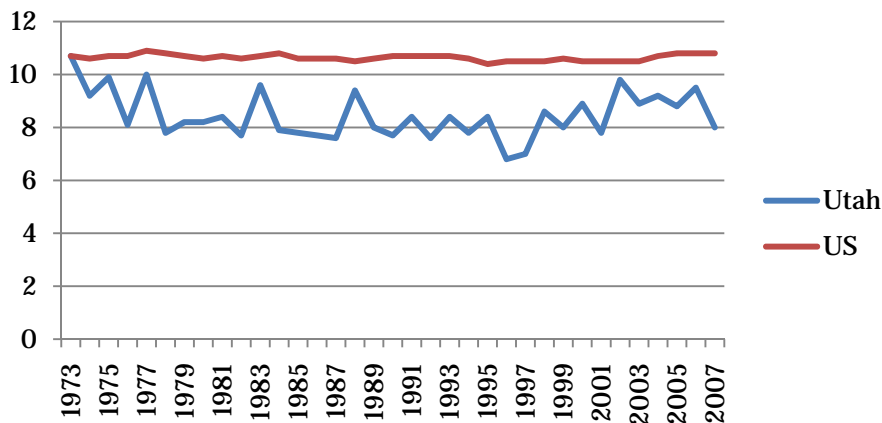
US



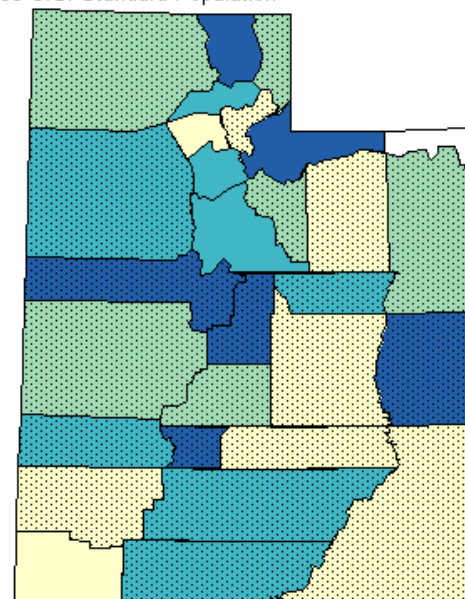
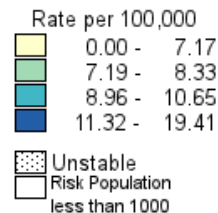
Rates are per 100,000 Estimates are age-adjusted to the 2000 US standard population.

Pancreatic Cancer Mortality^{1,3}

**Pancreatic Cancer Mortality,
2003-2007**



**Age-Adjusted Cancer Mortality Rates in Utah
Pancreas, 2003-2007
By County**
Age-Adjusted to the 2000 U.S. Standard Population
Utah Rate: 8.81



Rates per 100,000, age adjusted to the US Standard Population

Data accessed October 11, 2011.
Based on data released September 8, 2011.
Copyright (C) 2011 Utah Cancer Registry

Wrap Up

- **Future reports**
 - **Comments**
 - **Questions**



Data Acquisition, Utilization, and Management Team Members

- **Meghan Balough, UDOH**
- **Banning Leonard, UDOH**
- **Kathie Marti, UDOH**
- **Antoinette Stroup, UCR**
- **Shelly Wagstaff, UDOH**
- **Kim Herget, UCR**

Utah Cancer Registry Acknowledgement

- Research was supported by the Utah Cancer Registry, which is funded by Contract No. HHSN261201000026C from the National Cancer Institute's SEER Program with additional support from the Utah State Department of Health and the University of Utah.